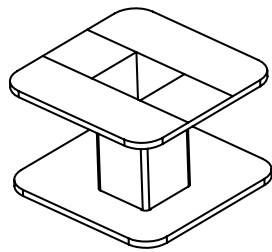
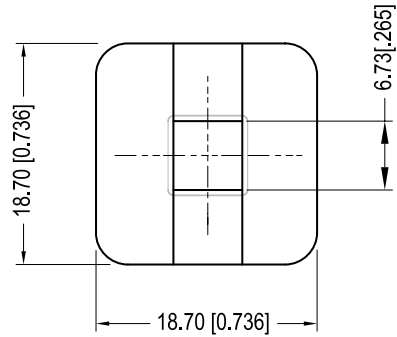


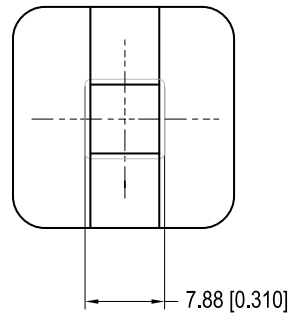
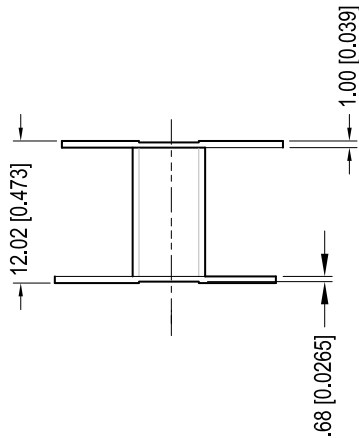
<b>Core cross reference (x = material variation within a size)</b>			Winding Area (mm <sup>2</sup> )	LODESTONE PACIFIC
Fair-Rite: 94XX015002	Micrometals: E100-XX	Magnetics: XX-42510-EC		<b>B-EE2425-0-1-GFN3</b>
Nicera: FEE-25.3	Epcos: B66315	MMG: 32-030-XX		
Ferroxcube: 812 E 250-3XXX	TDK: PCXEE24.4	E25/10/6		



**TOP**



**BOTTOM**



© 2006

	Scale	Tolerance (Inches)	Tolerance (mm)	No. of Terminals	Terminal Plating	Terminal Material	Terminal Type	
	None	.XXX ±.008 .XX ±.012	.XX ±0.20 .X ± 0.30	N/A	100% Tin	N/A	N/A	
<p style="text-align: center;"><b>LODESTONE PACIFIC</b></p> <p>Phone:(714)970-0900.Fax:(714)970-0800 4769 Wesley Drive,Anaheim,California,92807,USA Web:www.lodestonepacific.com E-Mail:sales@lodestonepacific.com</p>					Molding Material	UL File No.	Rating	Class
					Zytel	E41938	UL94-V2	B
					Lodestone's Part Number			Rev.
<b>B-EE2425-0-1-GFN3</b>			<b>1</b>					