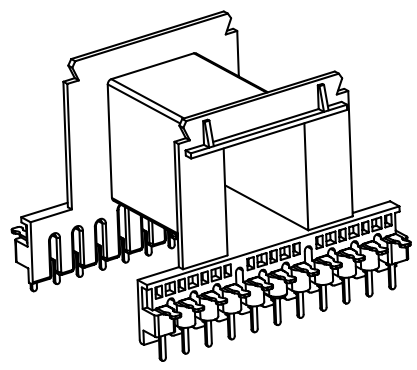
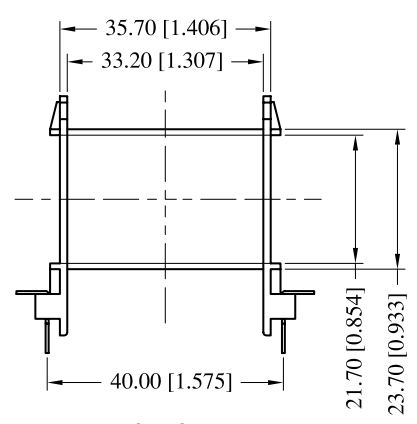
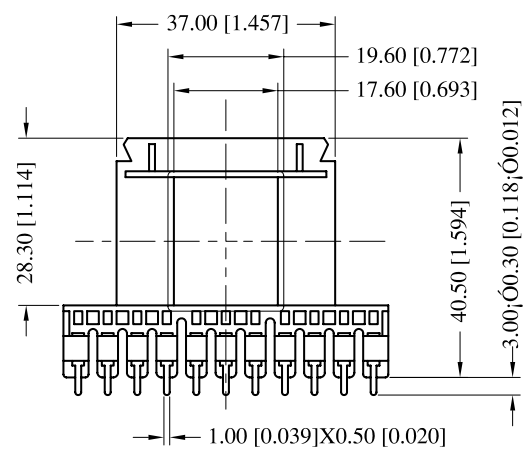
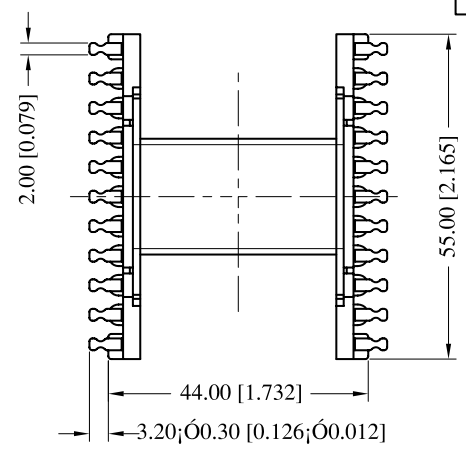


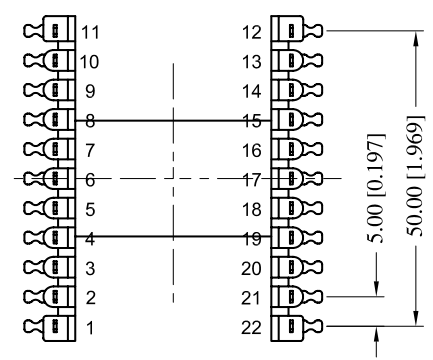
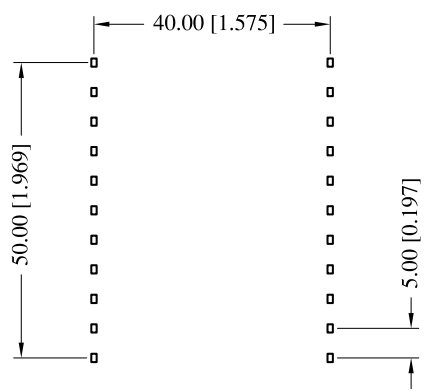
Core cross reference (x = material variation within a size)			Winding Area (mm ²)	LODESTONE PACIFIC B-EE55X21H-22-1-PET-ST
Fair-Rite: EE55/28/21	Micrometals: E220-XX	Magnetics: None		
Nicera: None	Epcos: None	MMG: 32-150-XX		
Ferroxcube: EE55/28/21-	TDK: XXXXEE55/55	Siemens: B66335		



TOP



BOTTOM



© 2006

	Scale	Tolerance (Inches)	Tolerance (mm)	No. of Terminals	Terminal Plating	Terminal Material	Terminal Type		
	None	.XXX ± .008 .XX ± .012	.XX ± 0.20 .X ± 0.30	22	100% Tin	Brass wire	L Type		
						Molding Material	UL File No.	Rating	Class
						PET FR530	E69578	UL94-VO	N
Phone:(714)970-0900.Fax:(714)970-0800 4769 Wesley Drive,Anaheim,California,92807,USA Web:www.lodestonepacific.com E-Mail:sales@lodestonepacific.com						Lodestone's Part Number		Rev.	
B-EE55X21H-22-1-PET-ST								1	