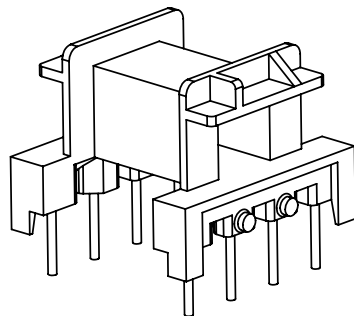
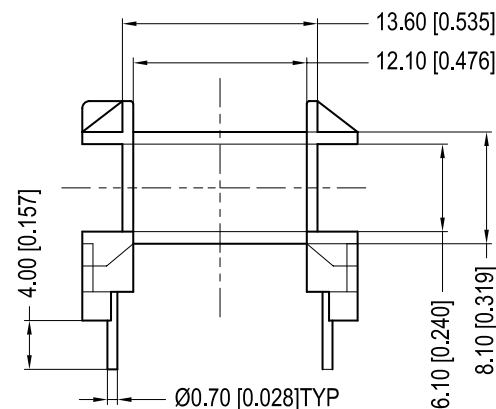
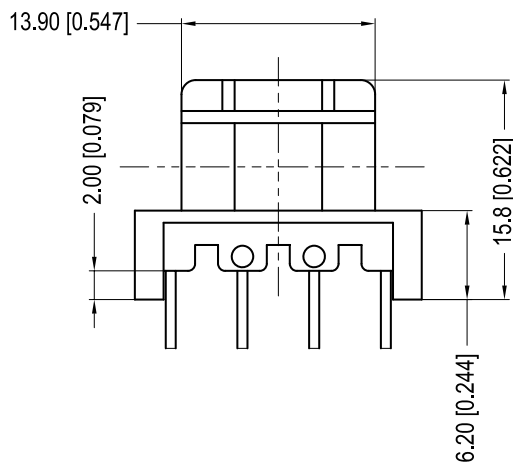
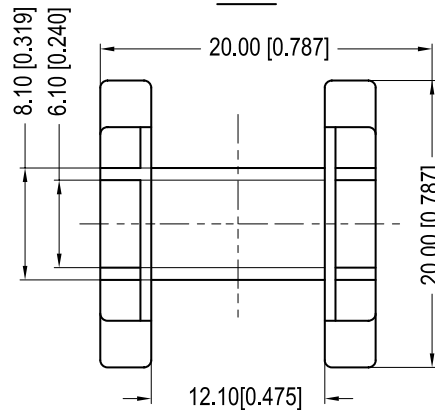


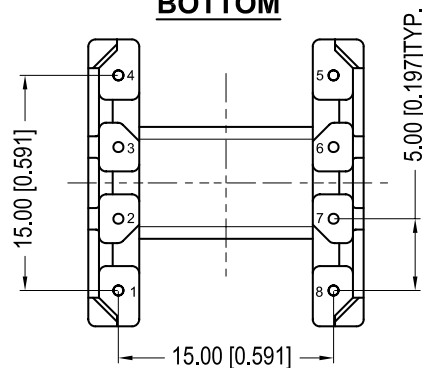
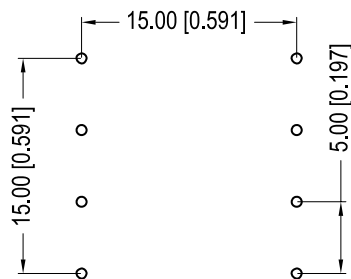
Core cross reference (x = material variation within a size)			Winding Area (mm <sup>2</sup> )	LODESTONE PACIFIC	
Fair-Rite:	Micrometals:	Magnetics:		<b>B-EF20H-8-1-PH2</b>	
Nicera:	Epcos: B66311	MMG: 32-180-XX			
Ferroxcube:	TDK: PCXCEF20-Z				



**TOP**



**BOTTOM**



© 2006

	Scale	Tolerance (Inches)	Tolerance (mm)	No. of Terminals	Terminal Plating	Terminal Material	Terminal Type	
	None	.XXX ± .008 .XX ± .012	.XX ± 0.20 .X ± 0.30	8	100% Tin	CP WIRE	Through Hole	
<p style="text-align: center;"><b>LODESTONE PACIFIC</b></p> <p>Phone: (714)970-0900. Fax: (714)970-0800 4769 Wesley Drive, Anaheim, California, 92807, USA Web: www.lodestonepacific.com E-Mail: sales@lodestonepacific.com</p>					Molding Material	UL File No.	Rating	Class
					PHENOLIC	E41429	UL94-VO	N
					Lodestone's Part Number			Rev.
<b>B-EF20H-8-1-PH2</b>			<b>1</b>					