

Core cross reference (x = material variation within a size)

Winding Area
(mm²)

LODESTONE PACIFIC

Fair-Rite:
Nicera: FEET-25C
Ferroxcube: EFD25-XXX-XXXX-S

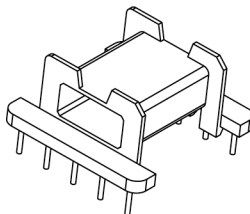
Micrometals:
Epcos: EFD 25/13/9
TDK:

Magnetics: XX-42523-EC
MMG: 32-760-XX

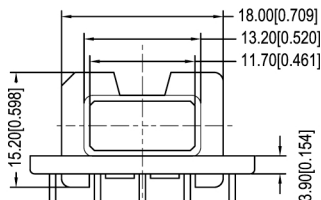
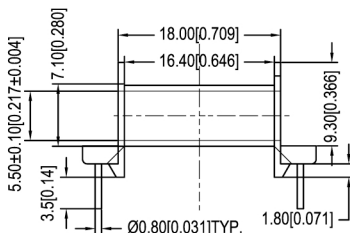
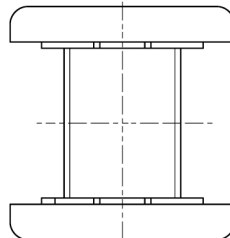
B-EFD25-10-1-PH2



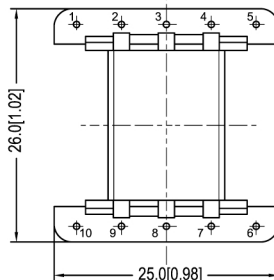
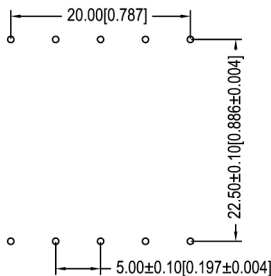
TOP



18.00 [0.729]



BOTTOM



© 2006



Scale	Tolerance (Inches)	Tolerance (mm)	No. of Terminals	Terminal Plating	Terminal Material	Terminal Type
None	.XXX ± .008 .XX ± .012	.XX ± 0.20 .X ± 0.30	10	100% Tin	CP WIRE	Through Hole

LODESTONE PACIFIC

Phone:(714)970-0900.Fax:(714)970-0800
4769 Wesley Drive,Anaheim,California,92807,USA
Web:www.lodestonepacific.com E-Mail:sales@lodestonepacific.com

Molding Material	UL File No.	Rating	Class
Phenolic	E41429	UL94-VO	N
Lodestone's Part Number			Rev.
B-EFD25-10-1-PH2			1