

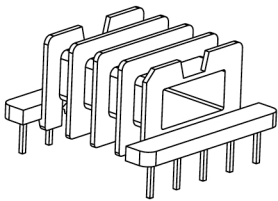
Core reference (x = material variation within a size)

Fair-Rite: None	Micrometals: None	Magnetics: XX-42523-EC
Nicra: FEET-25C	Epos: EFD25/13/9	MMG: 32-760-XX
Ferroxcube: EFD25-XXX-XXXX-5	TDK: None	

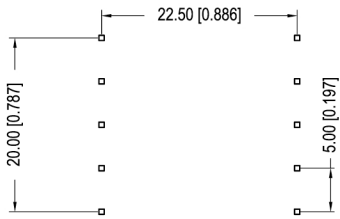
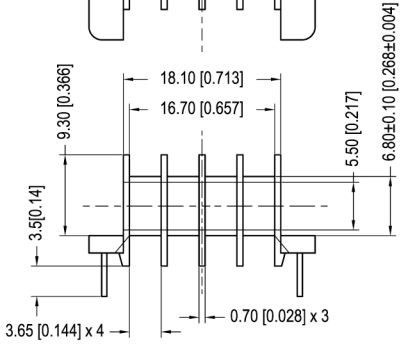
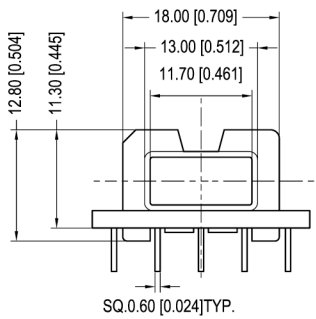
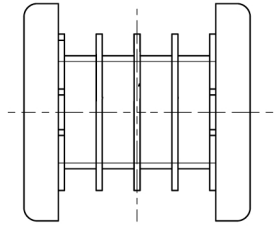
Winding Area (mm²)

LODESTONE PACIFIC

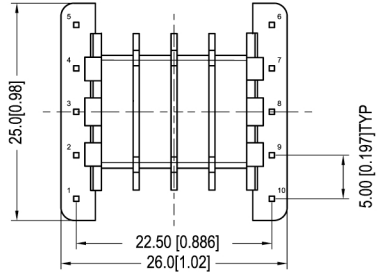
B-EFD25-10-4-PH



TOP



BOTTOM



© 2006

	Scale	Tolerance (Inches)	Tolerance (mm)	No. of Terminals	Terminal Plating	Terminal Material	Terminal Type	
	None	.XXX ± .008 .XX ± .012	.XX ± 0.20 X ± 0.30	10	100% Tin	CP WIRE	Through Hole	
LODESTONE PACIFIC					Molding Material	UL File No.	Rating	Class
					Phenolic	E41429	UL94-VO	N
Phone:(714)970-0900.Fax:(714)970-0800 4769 Wesley Drive,Anaheim,California,92807,USA Web:www.lodestonepacific.com E-Mail:sales@lodestonepacific.com					Lodestone's Part Number		Rev.	
					B-EFD25-10-4-PH		1	