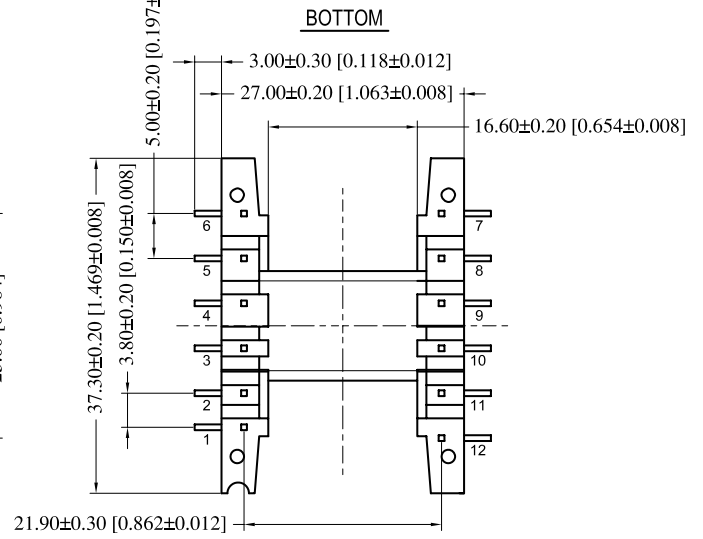
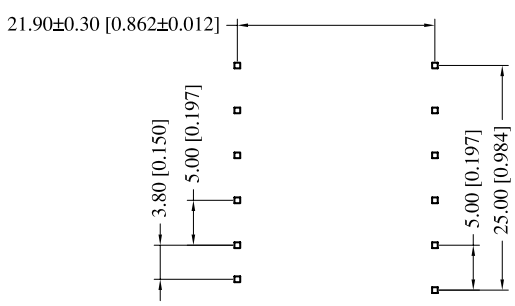
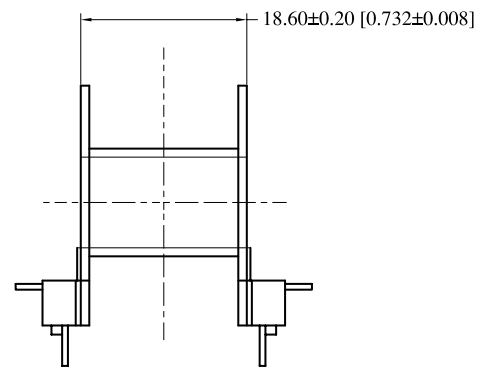
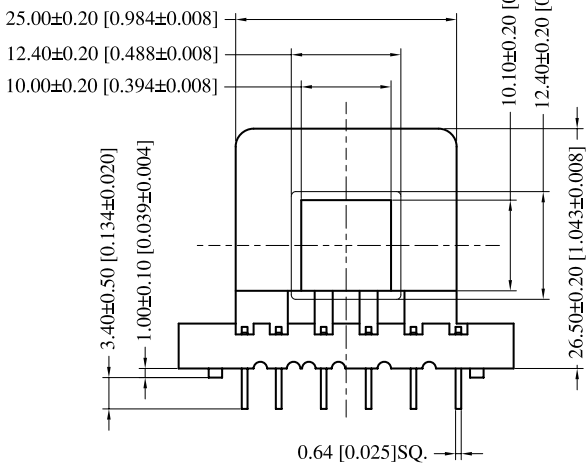
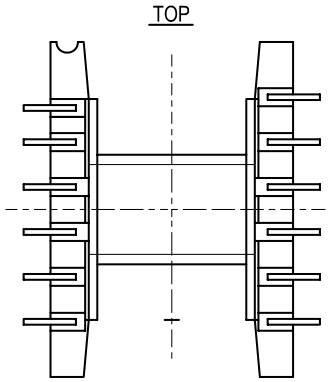
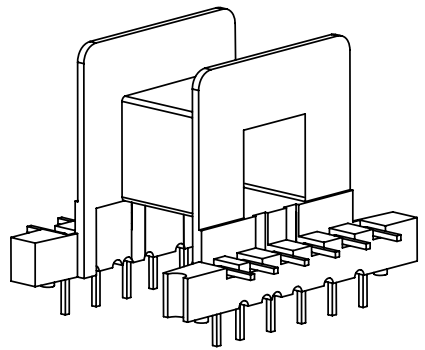


<b>Core cross reference (x = material variation within a size)</b>			Winding Area (mm <sup>2</sup> )	LODESTONE PACIFIC <b>B-EI375H-12-1-PET-L</b>
Fair-Rite: 94XX375002	Micrometals: E137-XX	Magnetics: XX-43515-EC		
Nicera: None	Epcos: None	MMG: 32-320-XX		
Ferroxcube: TSFXXX-34-14-9	TDK: PCXEE35/28	Siemens: B66370		



© 2006

	Scale	Tolerance (Inches)	Tolerance (mm)	No. of Terminals	Terminal Plating	Terminal Material	Terminal Type	
	None	.XXX ± .008 .XX ± .012	.XX ± 0.20 .X ± 0.30	12	100% Tin	CP WIRE	L-Type	
<b>LODESTONE PACIFIC</b>  Phone:(714)970-0900.Fax:(714)970-0800 4769 Wesley Drive,Anaheim,California,92807,USA Web:www.lodestonepacific.com E-Mail:sales@lodestonepacific.com					Molding Material	UL File No.	Rating	Class
					Rynite	E41938	UL94-VO	N
					Lodestone's Part Number			Rev.
<b>B-EI375H-12-1-PET-L</b>			<b>1</b>					