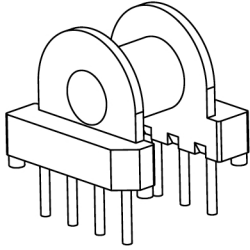


Core cross reference (x = material variation within a size)

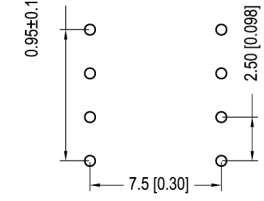
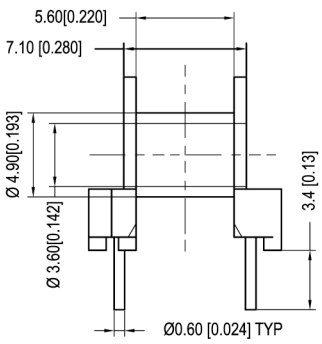
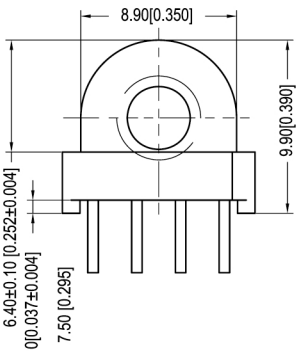
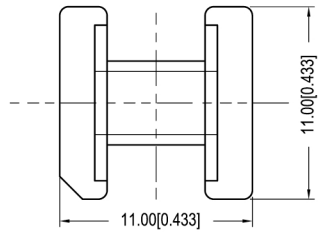
Fair-Rite: 65XX101021	Micrometals: None	Magnetics: XX-41010-JG
Nicera: FEP-10	Epcos: B6584-1	MMG: 32-820-XX
Ferroxcube: EP10-XXX-XXXX	TDK: XXXEP10-Z	

Winding Area (mm<sup>2</sup>)  
11.4

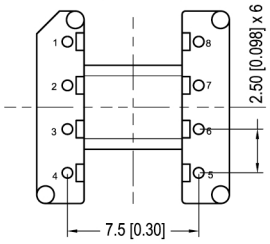
LODESTONE PACIFIC  
**B-EP10-8-1-PH**



**TOP**



**BOTTOM**



© 2006

	Scale	Tolerance (Inches)	Tolerance (mm)	No. of Terminals	Terminal Plating	Terminal Material	Terminal Type	
	None	.XXX ± .008 .XX ± .012	.XX ± 0.20 .X ± 0.30	8	100% Tin	CP WIRE	Through Hole	
<p style="text-align: center;"><b>LODESTONE PACIFIC</b></p> <p>Phone: (714)970-0900. Fax: (714)970-0800 4769 Wesley Drive, Anaheim, California, 92807, USA Web: www.lodestonepacific.com E-Mail: sales@lodestonepacific.com</p>					Molding Material	UL File No.	Rating	Class
					Phenolic	E41429	UL94-VO	N
Lodestone's Part Number							Rev.	
<b>B-EP10-8-1-PH</b>							<b>1</b>	