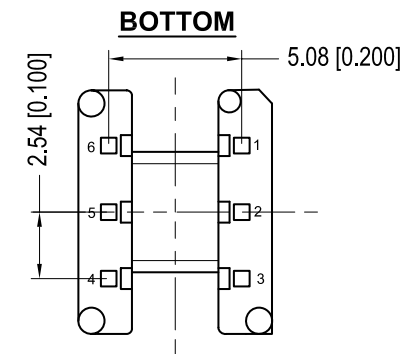
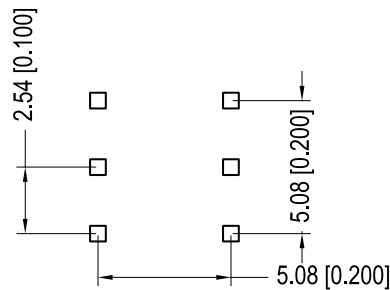
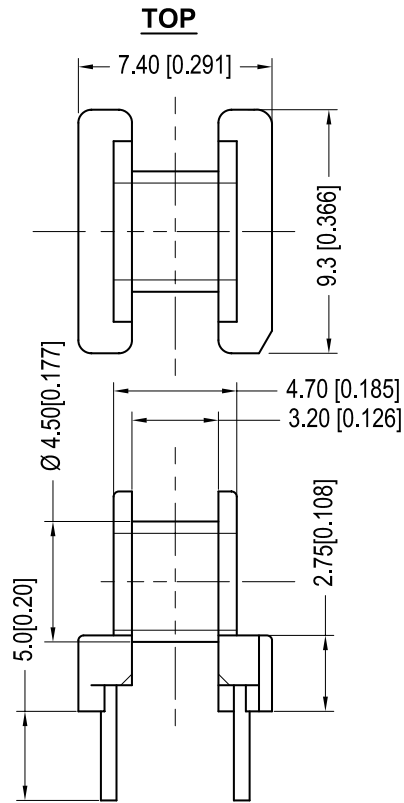
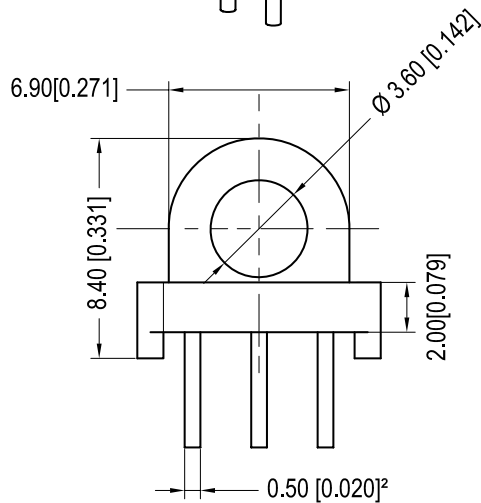
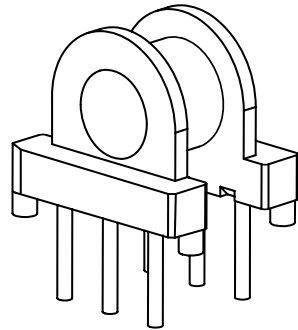


<b>Core cross reference (x = material variation within a size)</b>			Winding Area (mm <sup>2</sup> ) <b>3.8</b>	LODESTONE PACIFIC <b>B-EP7-6-1-PH2</b>
Fair-Rite: 65XX 070721	Micrometals:	Magnetics: XX-40707-UG		
Nicera: FEP-7	Epcos: B65839	MMG: 32-810-XX		
Ferroxcube: EP7-XXX-XXXX	TDK: XXXEP7-Z			



© 2006

	Scale	Tolerance (Inches)	Tolerance (mm)	No. of Terminals	Terminal Plating	Terminal Material	Terminal Type	
	None	.XXX ± .008 .XX ± .012	.XX ± 0.20 .X ± 0.30	6	100% Tin	CP WIRE	Through Hole	
<p style="text-align: center;"><b>LODESTONE PACIFIC</b></p> <p>Phone: (714)970-0900. Fax: (714)970-0800 4769 Wesley Drive, Anaheim, California, 92807, USA Web: www.lodestonepacific.com E-Mail: sales@lodestonepacific.com</p>					Molding Material	UL File No.	Rating	Class
					Phenolic	E41429	UL94-VO	N
					Lodestone's Part Number			Rev.
<b>B-EP7-6-1-PH2</b>			<b>1</b>					