

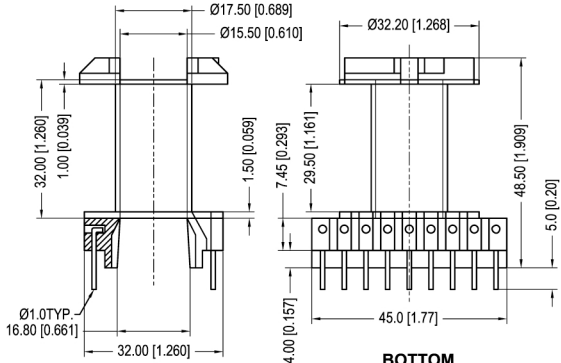
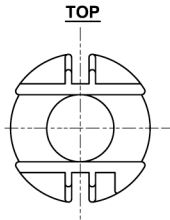
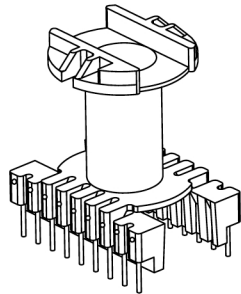
Core reference variation within a size)

| | | |
|-----------------------------|-------------------|-----------------------|
| Fair-Rite: 95**44000 | Micrometals: None | Magnetics: *-44444-EC |
| Nicera: None | Epcos: B66365 | MMG: 32-54*-** |
| Ferroxcube: ETD44-****-**** | TDK: ETD44-Z | |

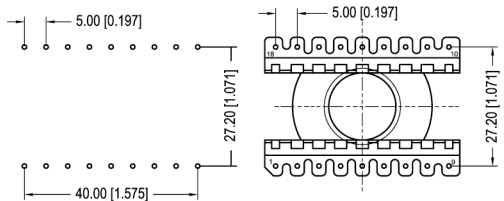
Winding Area
(mm²)

LODESTONE PACIFIC

B-ETD44V-18-1-PBT



BOTTOM



© 2006

| | | | | | | | | |
|---|-------|-----------------------------|-------------------------|------------------|------------------|-------------------|---------------|----------|
| | Scale | Tolerance (Inches) | Tolerance (mm) | No. of Terminals | Terminal Plating | Terminal Material | Terminal Type | |
| | None | .XXX ± 0.008 .XX ± 0.012 | .XX ± 0.20 .X ± 0.30 | 18 | 100% Tin | CP WIRE | Through Hole | |
| <p style="text-align: center;">LODESTONE PACIFIC</p> <p>Phone: (714)970-0900, Fax: (714)970-0800 4769 Wesley Drive, Anaheim, California, 92807, USA Web: www.lodestonepacific.com E-Mail: sales@lodestonepacific.com</p> | | | | | Molding Material | UL File No. | Rating | Class |
| | | | | | PBT | E59481 | UL94-VO | B |
| Lodestone's Part Number | | | | | | | | Rev. |
| B-ETD44V-18-1-PBT | | | | | | | | 1 |