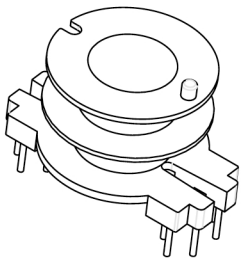


Core cross reference (x = material variation within a size)

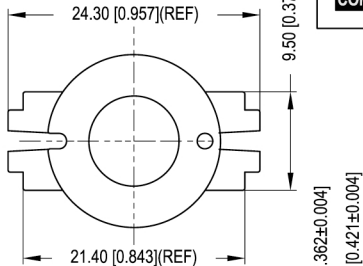
Fair-Rite: None	Micrometals: None	Magnetics: NX-42316-UG
Nicera: FRM-8	Epcos: B65811	MMG: 29-790X-XX
Ferroxcube: RM8-XXX-XXXX	TDK: XXXXRM8Z-XX	

Winding Area (mm²)
30

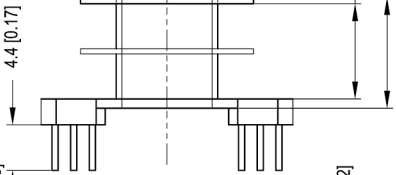
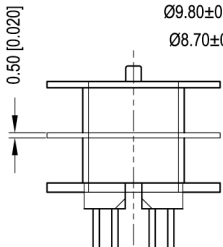
LODESTONE PACIFIC
B-RM8-12-2-PH



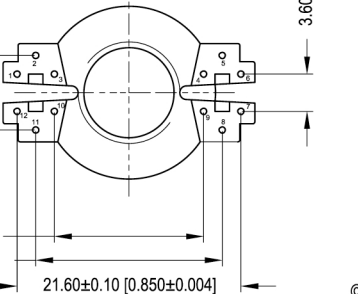
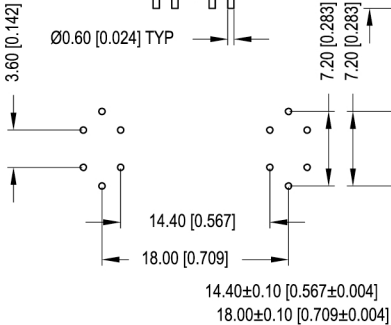
TOP



- Ø16.70±0.10 [0.657±0.004]
- Ø9.80±0.10 [0.386±0.004]
- Ø8.70±0.10 [0.343±0.004]



BOTTOM



© 2006

	Scale	Tolerance (Inches)	Tolerance (mm)	No. of Terminals	Terminal Plating	Terminal Material	Terminal Type	
	None	.XXX ± .008 .XX ± .012	.XX ± 0.20 .X ± 0.30	12	100% Tin	CP Wire	Through Hole	
LODESTONE PACIFIC					Molding Material	UL File No.	Rating	Class
					Phenolic	E41429	UL94-V0	N
Lodestone's Part Number							Rev.	
B-RM8-12-2-PH							1	

Phone: (714)970-0900. Fax: (714)970-0800
4769 Wesley Drive, Anaheim, California, 92807, USA
Web: www.lodestonepacific.com E-Mail: sales@lodestonepacific.com