

Core cross reference (x = material variation within a size)

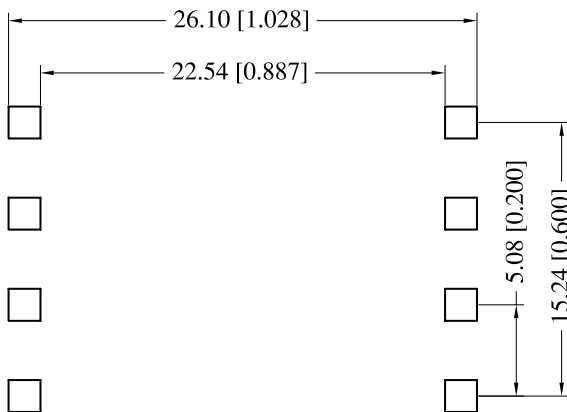
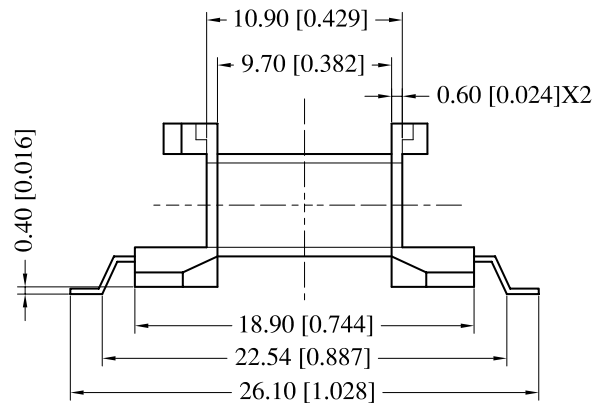
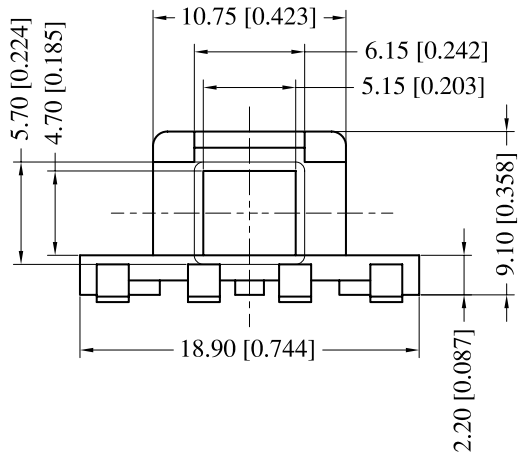
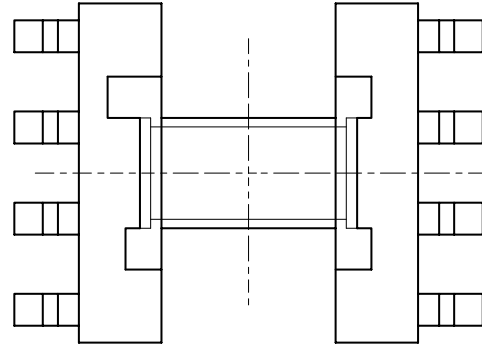
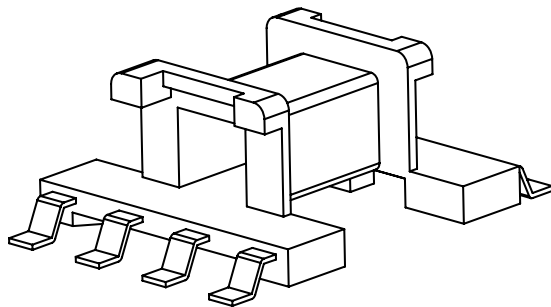
Fair-Rite: None	Micrometals: None	Magnetics: None
Nicera: None	Epcos: None	MMG: None
Ferroxcube: E16/8/5	Phillips: E16/8/5-3C 85	F/R Intl.: TSFXXXX-16-08-05

Winding Area
(mm²)

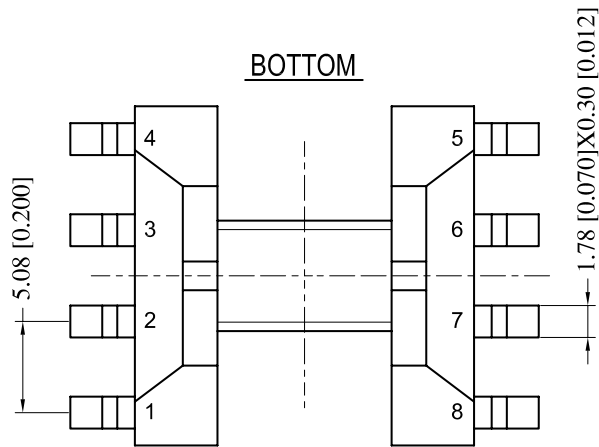
LODESTONE PACIFIC
SMB-EF16H-8-1-LCP



TOP



BOTTOM



© 2006

Scale	Tolerance (Inches)	Tolerance (mm)	No. of Terminals	Terminal Plating	Terminal Material	Terminal Type	
None	.XXX ± .008 .XX ± .012	.XX ± 0.20 .X ± 0.30	8	100% Tin	Phosphor Bronze	Surface Mount	
<p style="text-align: center;">LODESTONE PACIFIC</p> <p>Phone: (714)970-0900. Fax: (714)970-0800 4769 Wesley Drive. Anaheim, California, 92807. USA Web: www.lodestonepacific.com E-Mail: sales@lodestonepacific.com</p>				Molding Material	UL File No.	Rating	Class
				LCP E4008	E54705	UL94-VO	N
				Lodestone's Part Number			Rev.
SMB-EF16H-8-1-LCP			1				