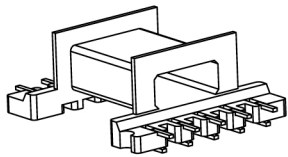


Core cross reference (x = material variation within a size)

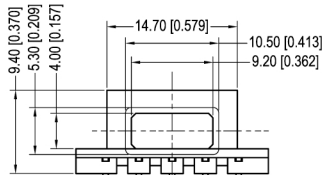
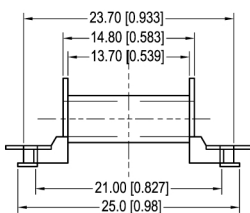
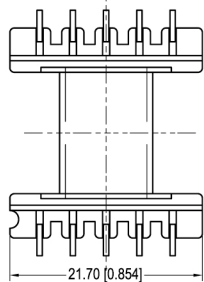
Fair-Rite:	Micrometals: EF80-XX	Magnetics:
Nicera: FEET-20C	Epcos: EFD20/10/7	MMG: 32-740-XX
Ferroxcube: EFD20-XXX-XXX-S	TDK:	

Winding Area
(mm²)

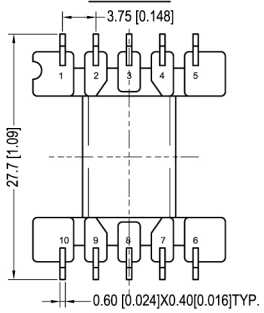
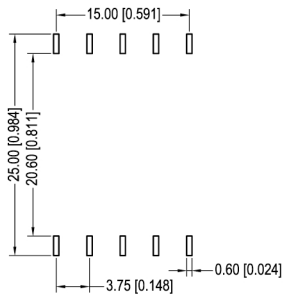
LODESTONE PACIFIC
SMB-EFD20-10-1-LCP-C



TOP



BOTTOM



© 2006

	Scale	Tolerance (Inches)	Tolerance (mm)	No. of Terminals	Terminal Plating	Terminal Material	Terminal Type	
	None	.XXX ± .008 .XX ± .012	.XX ± 0.20 .X ± 0.30	10	100% Tin	Phosphor Bronze	C Type	
<p style="text-align: center;">LODESTONE PACIFIC</p>					Molding Material	UL File No.	Rating	Class
					LCP	E54705	UL94-VO	F
<p style="text-align: center;">Phone: (714)970-0900. Fax: (714)970-0800 4769 Wesley Drive, Anaheim, California, 92807, USA Web: www.lodestonepacific.com E-Mail: sales@lodestonepacific.com</p>							<p style="text-align: center;">LoDESTONE'S Part Number</p>	Rev.
SMB-EFD20-10-1-LCP-C								1