

Core cross reference (x = material variation within a size)

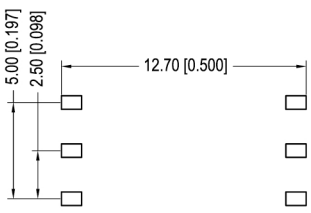
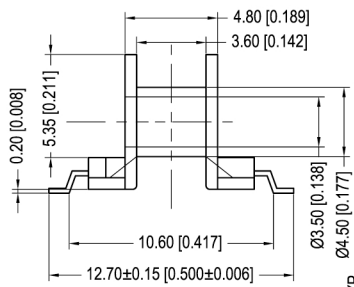
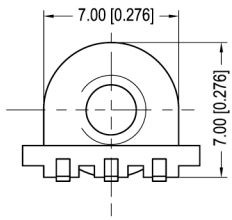
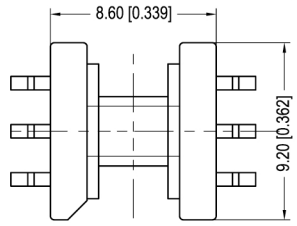
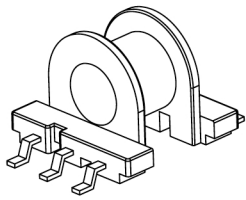
Fair-Rite: XXXEP7-Z	Micrometals: None	Magnetics: XX-40707-JG
Nicera: FEP-7	Epcos: B65839	MMG: 32-810-XX
Ferroxcube: EP7-XXX-XXXX	TDK: XXXEP7-Z	

Winding Area  
(mm<sup>2</sup>)  
4.4

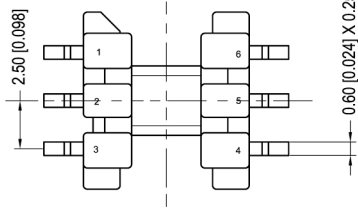
LODESTONE PACIFIC  
**SMB-EP7-6-1-PH**



**TOP**



**BOTTOM**



© 2006

	Scale	Tolerance (Inches)	Tolerance (mm)	No. of Terminals	Terminal Plating	Terminal Material	Terminal Type	
	None	.XXX ± .008 .XX ± .012	.XX ± 0.20 .X ± 0.30	6	100% Tin	Phosphor Bronze	Surface Mount	
<b>LODESTONE PACIFIC</b>					Molding Material	UL File No.	Rating	Class
					Phenolic	E41429	UL94-VO	N
					Lodestone's Part Number			Rev.
					<b>SMB-EP7-6-1-PH</b>			<b>1</b>

Phone:(714)970-0900.Fax:(714)970-0800  
4769 Wesley Drive,Anaheim,California,92807,USA  
Web:www.lodestonepacific.com E-Mail:sales@lodestonepacific.com