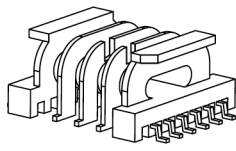


Core cross reference (x = material variation within a size)

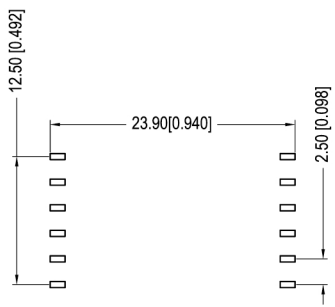
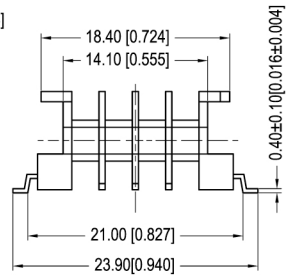
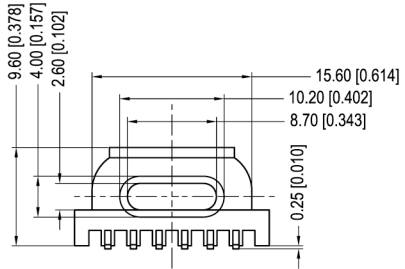
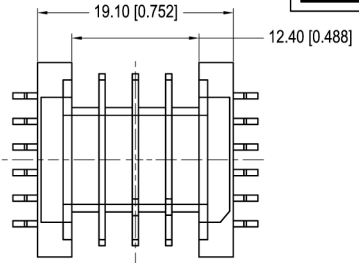
Fair-Rite: None	Micrometals: None	Magnetics: None
Nicera: FEET-19D	Epcos: None	MMG: None
Ferroxcube: None	TDK: PC40EPC19-Z	

Winding Area
(mm²)

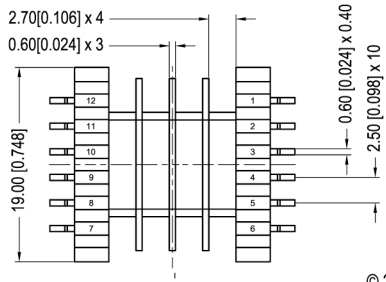
LODESTONE PACIFIC
SMB-EPC19-12-4-LCP3



TOP



BOTTOM



© 2006

	Scale	Tolerance (Inches)	Tolerance (mm)	No. of Terminals	Terminal Plating	Terminal Material	Terminal Type
	None	.XXX ± .008 .XX ± .012	.XX ± 0.20 .X ± 0.30	12	100% Tin	Phorphos Bronze	Surface Mount

LODESTONE PACIFIC

Phone: (714) 970-0900. Fax: (714) 970-0800
4769 Wesley Drive, Anaheim, California, 92807, USA
Web: www.lodestonepacific.com E-Mail: sales@lodestonepacific.com

Molding Material	UL File No.	Rating	Class
LCP	E91944	UL94-V0	F
Lodestone's Part Number			Rev.
SMB-EPC19-12-4-LCP3			1