

Core cross reference (x = material variation within a size)

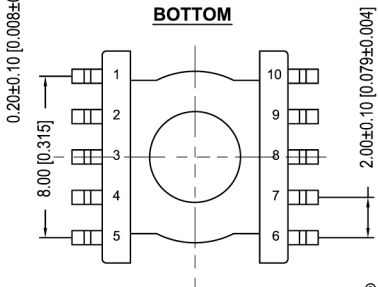
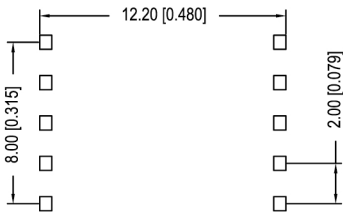
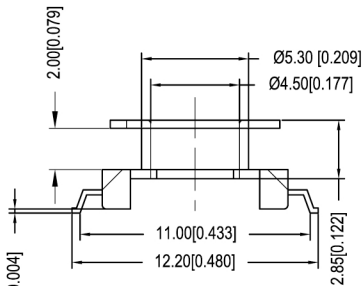
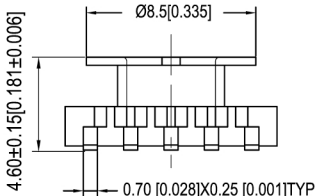
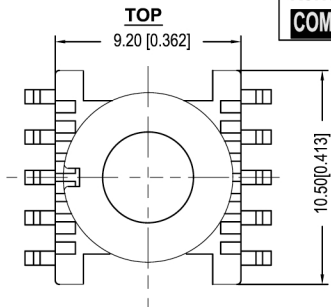
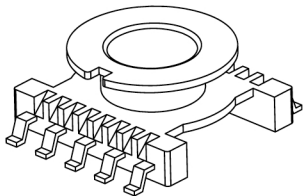
Fair-Rite: None	Micrometals: None	Magnetics: None
Nicera: FEER-11/5S	Epos: B65525	MMG: None
Ferroxcube: ER11-XXX-XXX-S	TDK: XXXXER11/5-Z	

Winding Area (mm<sup>2</sup>)

LODESTONE PACIFIC

2.8

SMB-ER11.5-10-1-LCP



© 2006

	Scale	Tolerance (Inches)	Tolerance (mm)	No. of Terminals	Terminal Plating	Terminal Material	Terminal Type	
	None	.XXX ± .008 .XX ± .012	.XX ± 0.20 .X ± 0.30	10	100% Tin	Phosphor Bronze	Surface Mount	
<p style="text-align: center;"><b>LODESTONE PACIFIC</b></p>					Molding Material	UL File No.	Rating	Class
					LCP	E54705	UL94-V0	F
Lodestone's Part Number						Rev.		
<b>SMB-ER11.5-10-1-LCP</b>						<b>1</b>		

Phone: (714) 970-0900, Fax: (714) 970-0800  
 4769 Wesley Drive, Anaheim, California, 92807, USA  
 Web: www.lodestonepacific.com E-Mail: sales@lodestonepacific.com