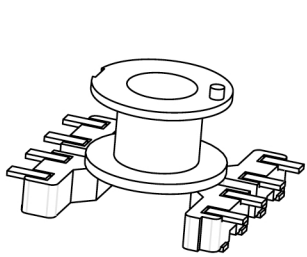


Core cross reference (x = material variation within a size)

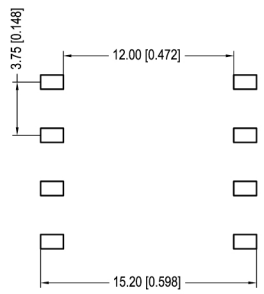
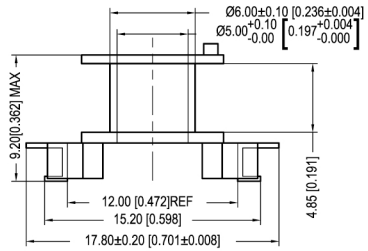
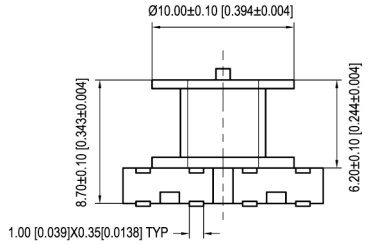
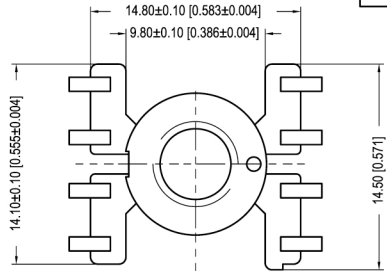
Fair-Rite: None	Micrometals: None	Magnetics: NX-41510-UG
Nicera: FRM-5	Epcos: B65805	MMG: 29-7XX-XX
Ferroxcube: RM5-XXX-XXXX	TDK: XXXXRM5Z-XX	

Winding Area  
(mm<sup>2</sup>)  
9.2

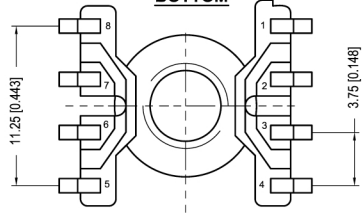
LODESTONE PACIFIC  
**SMB-RM5-8-1-PH-C**



**TOP**



**BOTTOM**



© 2006

	Scale	Tolerance (Inches)	Tolerance (mm)	No. of Terminals	Terminal Plating	Terminal Material	Terminal Type	
	None	.XXX ± .008 .XX ± .012	XX ± 0.20 X ± 0.30	8	100% Tin	Phosphor Bronze	C Type	
<p style="text-align: center;"><b>LODESTONE PACIFIC</b></p> <p>Phone: (714)970-0900. Fax: (714)970-0800 4769 Wesley Drive, Anaheim, California, 92807, USA Web: www.lodestonepacific.com E-Mail: sales@lodestonepacific.com</p>					Molding Material	UL File No.	Rating	Class
					Phenolic	E41429	UL94-VO	N
Lodestone's Part Number							Rev.	
<b>SMB-RM5-8-1-PH-C</b>							<b>1</b>	