



Standard Q Curves For A, D, And G Ferrite Materials

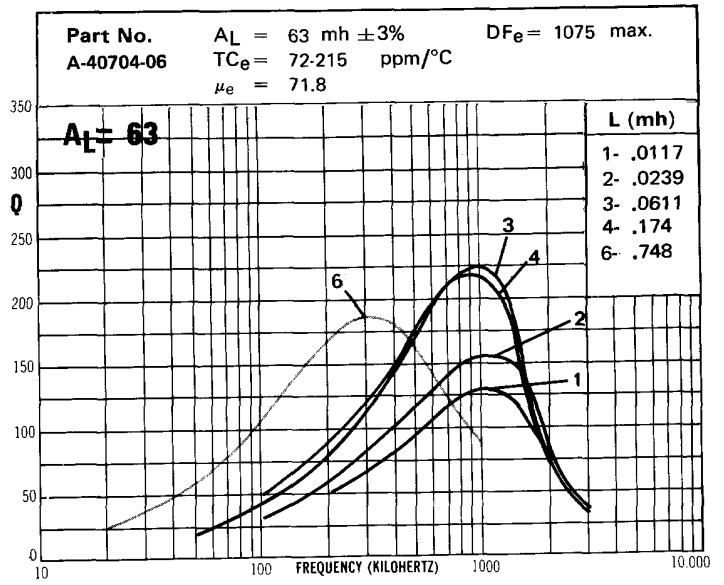
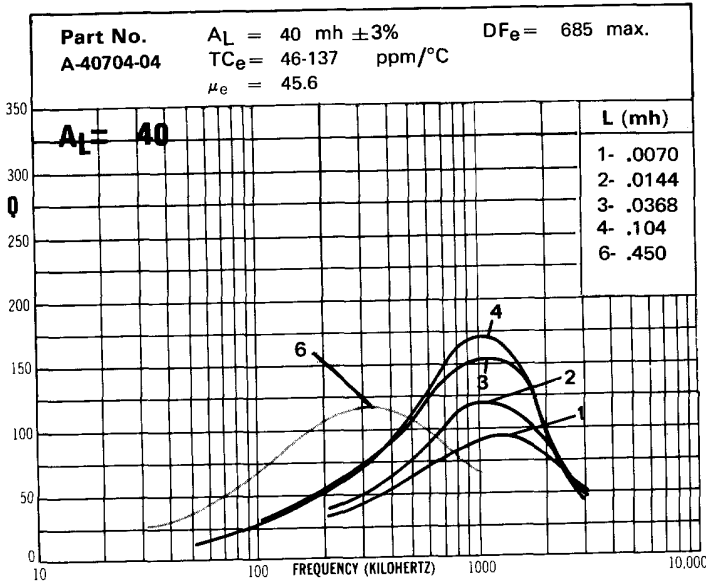
Core Size (mm)	Page(s)
(Pot Cores)	
7 x 4	2-3
9 x 5	4-6
11 x 7	7-9
14 x 8	10-12
18 x 11	13-15
22 x 13	16-18
26 x 16	19-21
30 x 19	22-23
36 x 22	24-25
42 x 29	26
(RS, RM Cores)	
23 x 11	27
23 x 18	27
15 x 10	28-29
18 x 12 (R6)	30
18 x 12 (M6)	31-32
23 x 16	33-34
15 x 14 (Q core)	35

Core Size 7mm x 4 mm

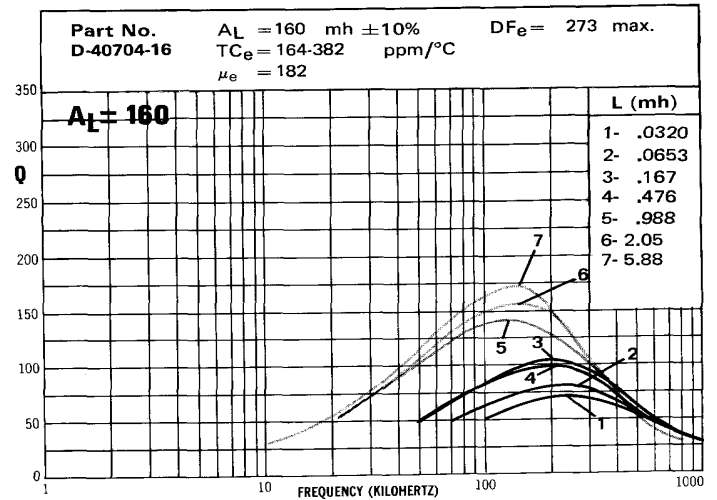
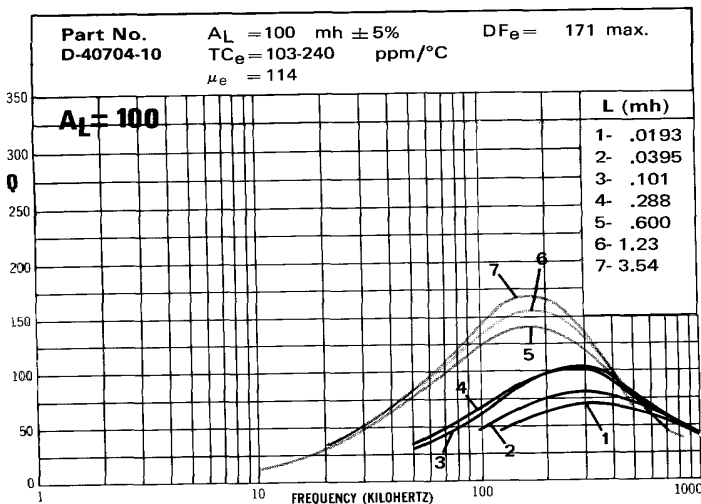
BOBBIN WINDING AREA (Per Section)	BOBBIN INFORMATION		
	Number	Turns	Wire
Single Sect. <u>.025</u> cm ²	1	14	30/44
Double Sect. _____ *	2	20	20/44
Triple Sect. _____ *	3	32	12/44
	4	54	5/44
	5	78	#35
	6	112	#37
	7	190	#40

*Not available

Material A



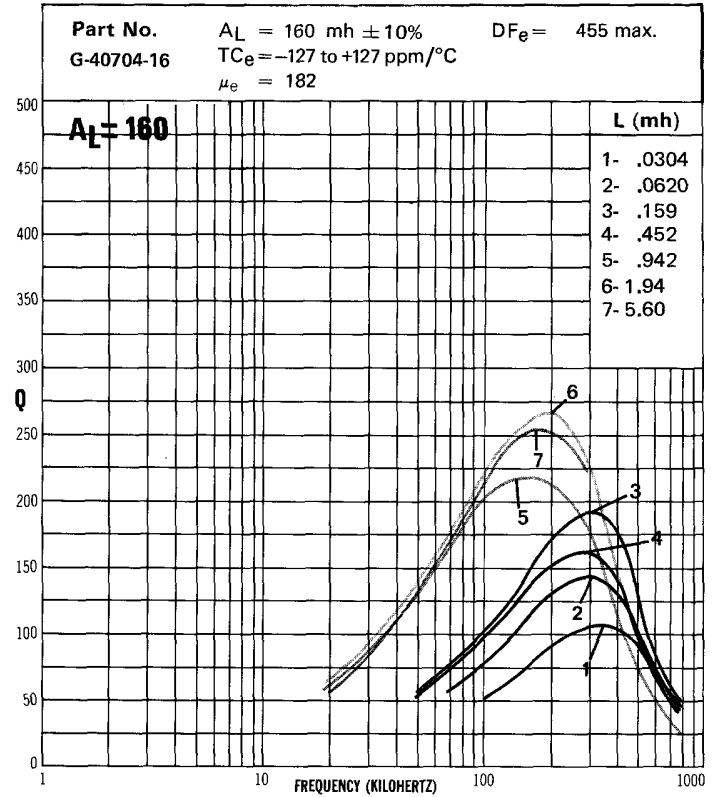
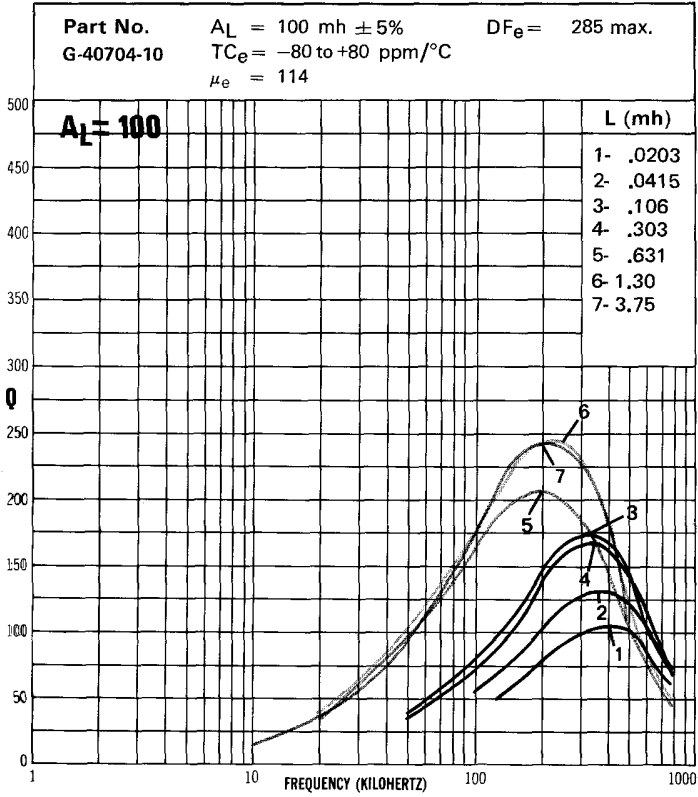
Material D



Core Size 7mm x 4mm Material G

BOBBIN WINDING AREA (Per Section)	BOBBIN INFORMATION		
	Number	Turns	Wire
Single Sect. <u>.025</u> cm ²	1	14	30/44
Double Sect. <u>*</u>	2	20	20/44
Triple Sect. <u>*</u>	3	32	12/44
	4	54	5/44
	5	78	#35
	6	112	#37
	7	190	#40

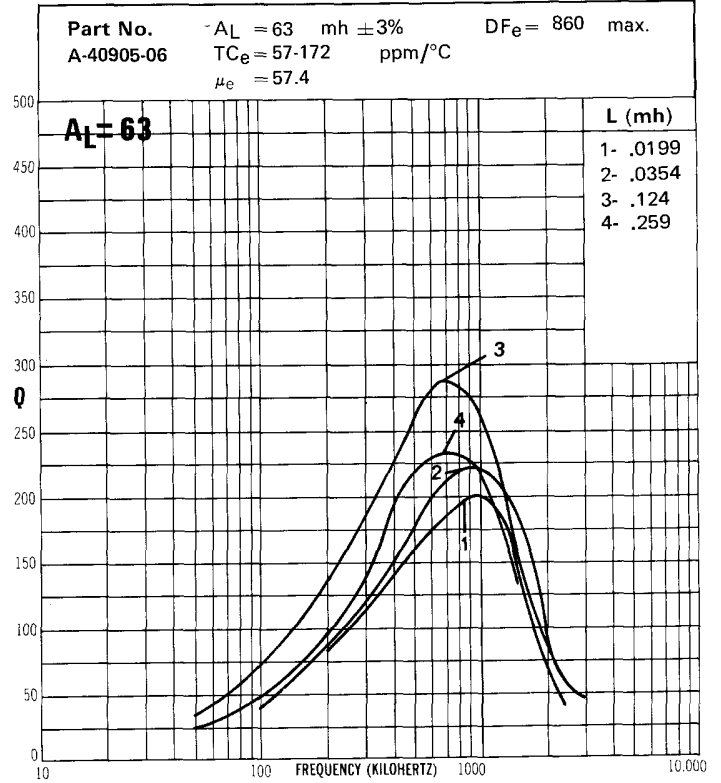
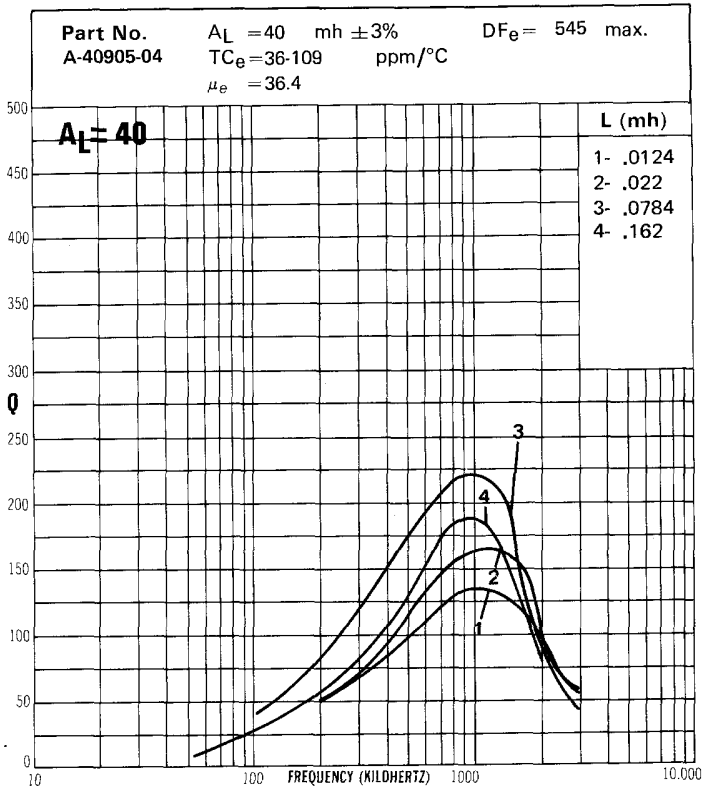
*Not available



Core Size 9mm x 5mm Material A

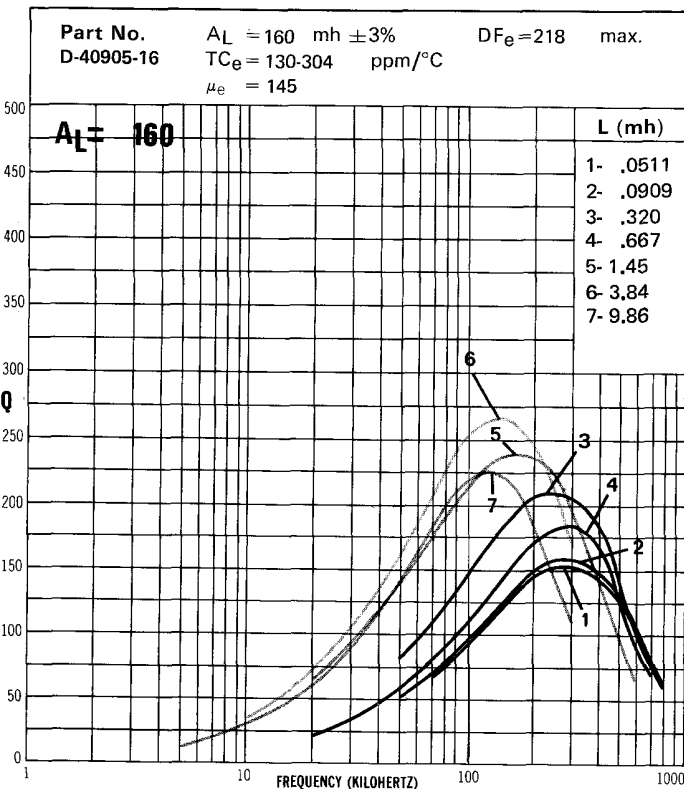
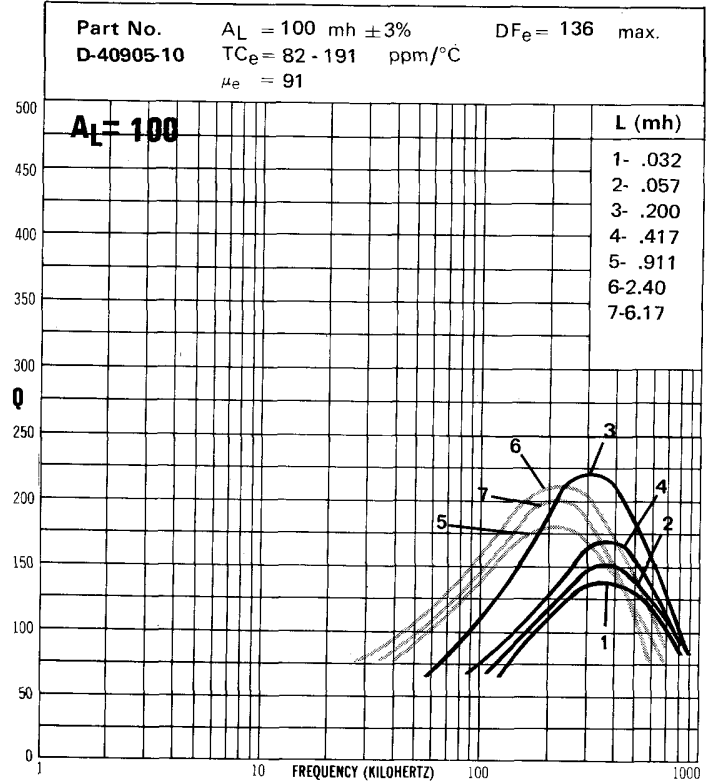
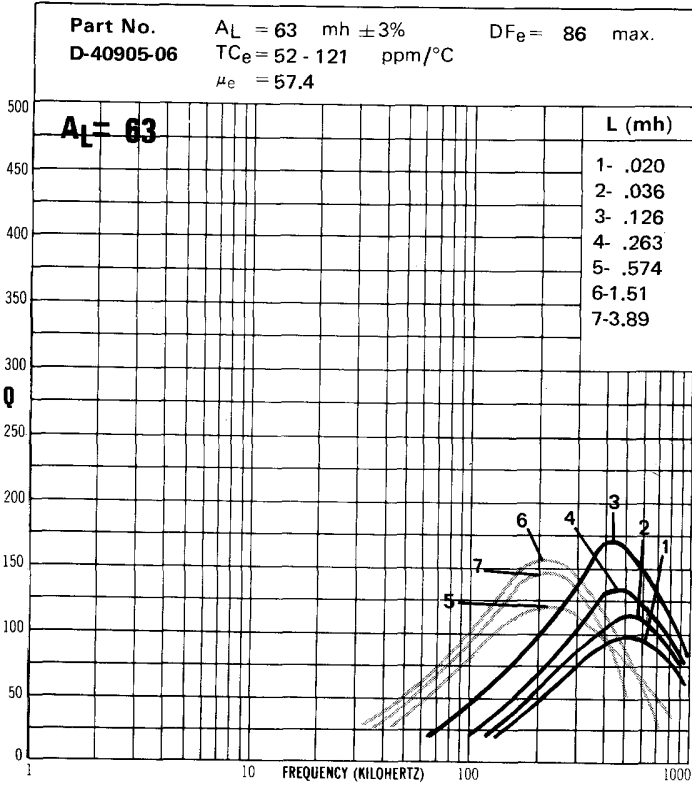
BOBBIN WINDING AREA (Per Section)	BOBBIN INFORMATION		
	Number	Turns	Wire
Single Sect. <u>.03</u> cm ²	1	18	30/44
Double Sect. <u>*</u>	2	24	20/44
Triple Sect. <u>*</u>	3	45	12/44
	4	65	5/44

* Not available



Core Size 9mm x 5mm Material D

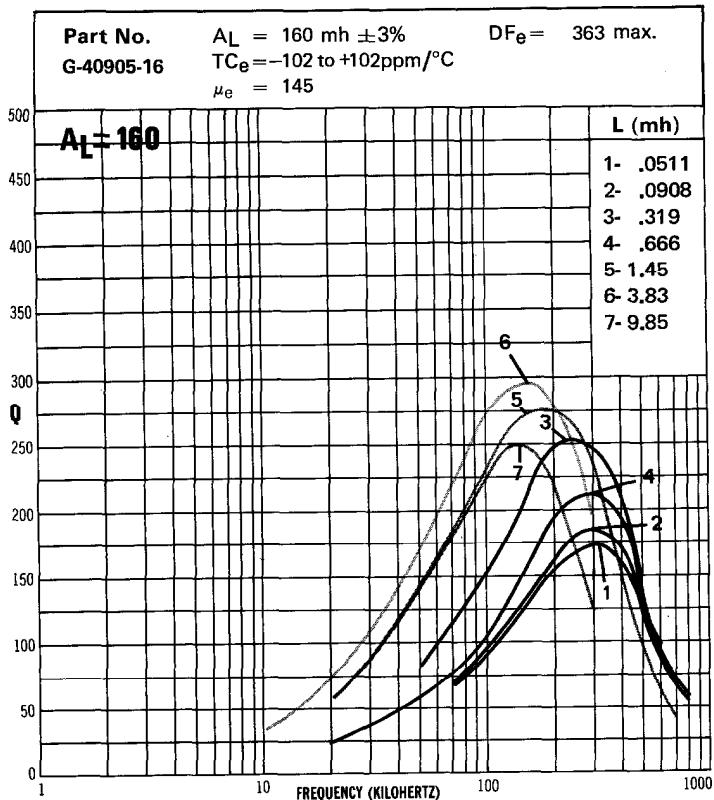
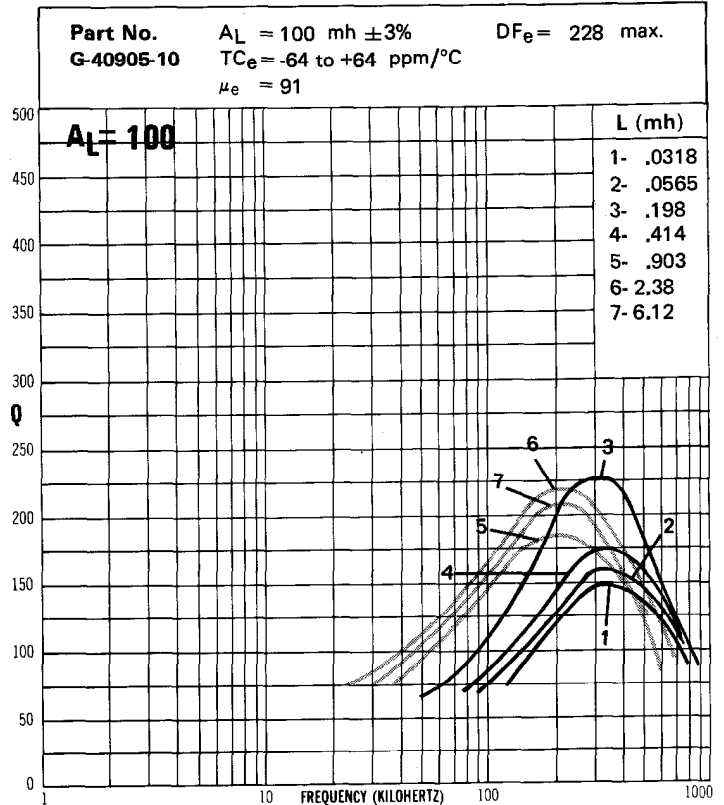
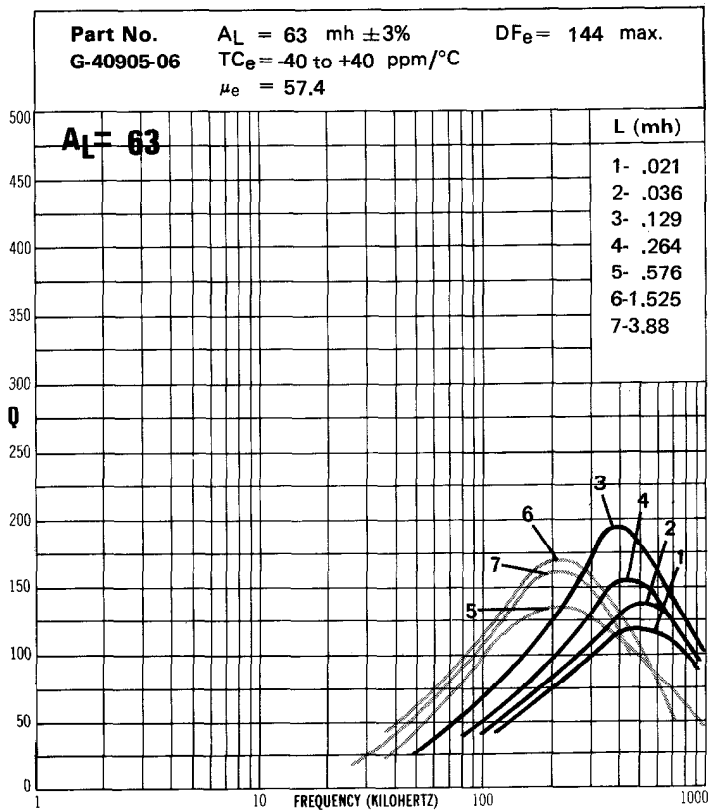
BOBBIN WINDING AREA (Per Section)	BOBBIN INFORMATION		
	Number	Turns	Wire
Single Sect. <u>.03</u> cm ²	1	18	30/44
	2	24	20/44
	3	45	12/44
Double Sect. <u>*</u>	4	65	5/44
	5	96	#35
Triple Sect. <u>*</u>	6	156	#37
*Not Available	7	250	#40



Core Size 9mm x 5mm Material G

BOBBIN WINDING AREA (Per Section)	BOBBIN INFORMATION		
	Number	Turns	Wire
Single Sect. <u>.03</u> cm ²	1	18	30/44
Double Sect. <u>*</u>	2	24	20/44
Triple Sect. <u>*</u>	3	45	12/44
	4	65	5/44
	5	96	#35
	6	156	#37
	7	250	#40

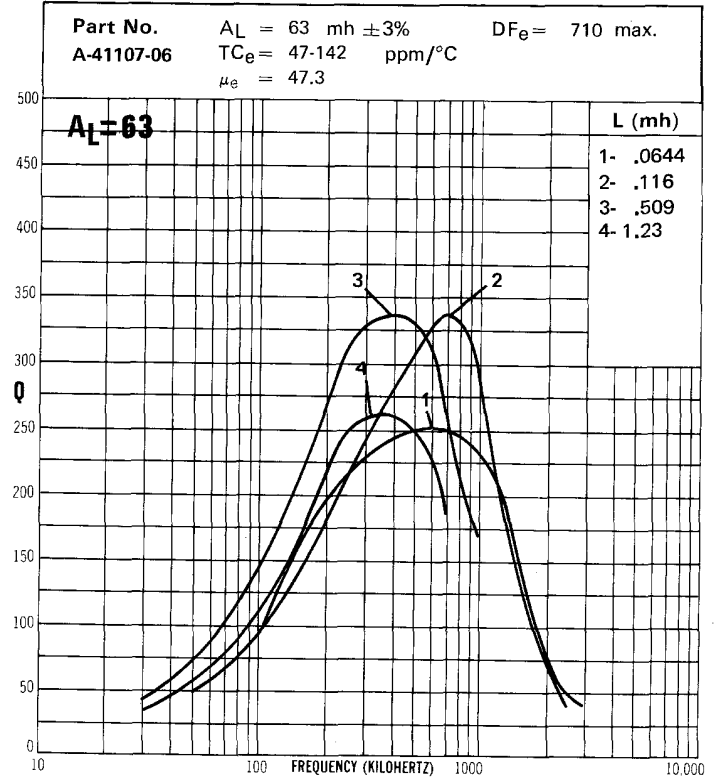
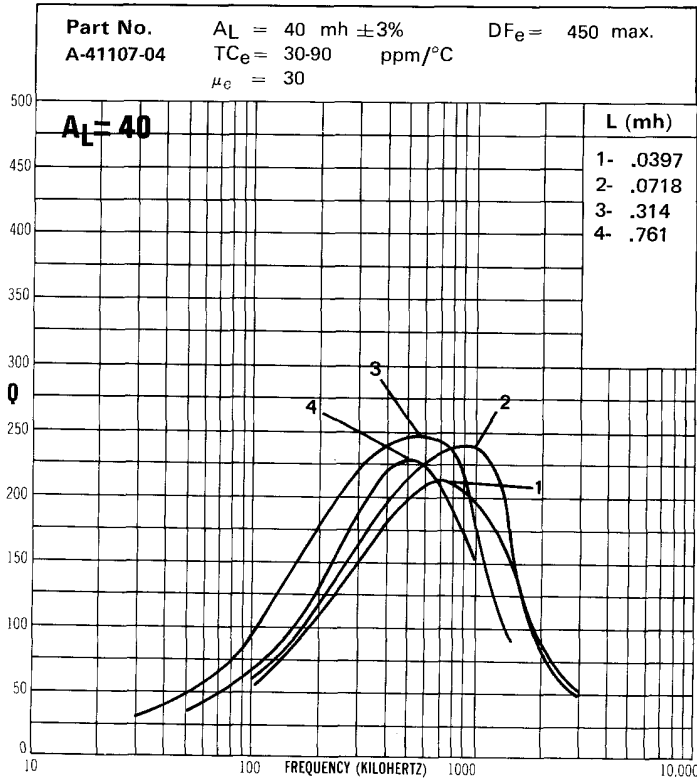
*Not available



Core Size 11mm x 7mm Material A

All measurements made on single section bobbins

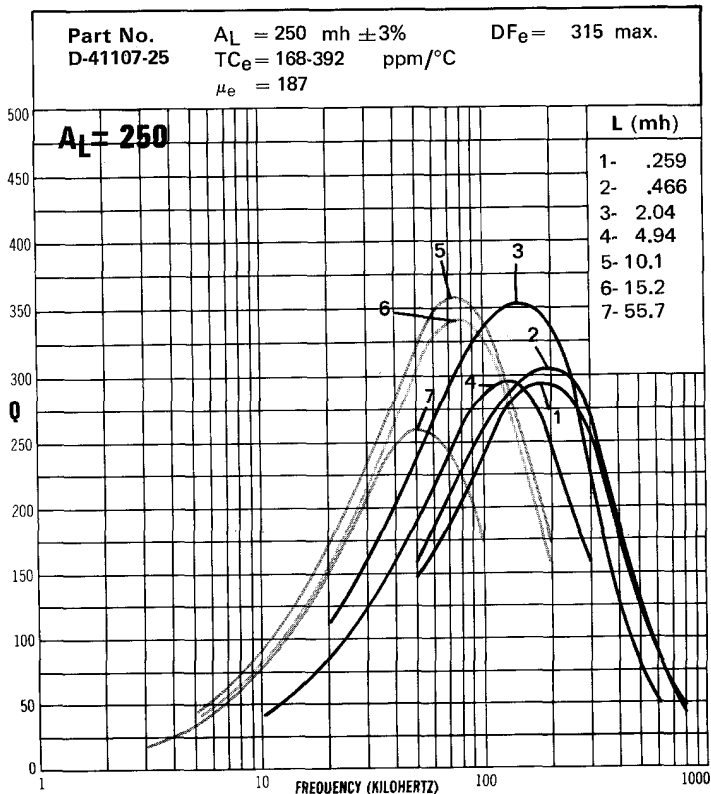
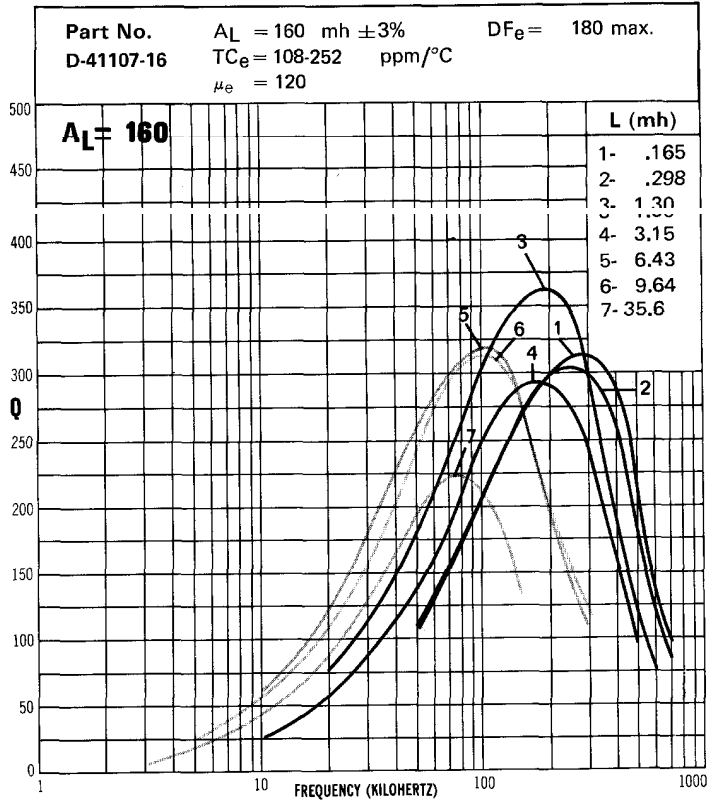
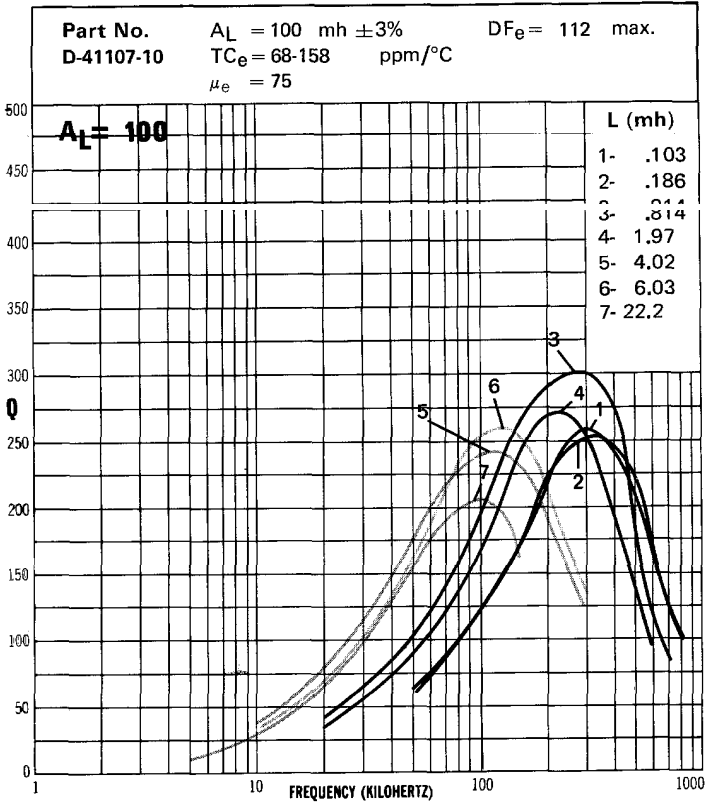
BOBBIN WINDING AREA (Per Section)	BOBBIN INFORMATION		
	Number	Turns	Wire
Single Sect. <u>.05</u> cm ²	1	32	30/44
	2	43	20/44
Double Sect. <u>.022</u> cm ²	3	90	12/44
	4	140	5/44
Triple Sect. <u>*</u>			
*Not available			



Core Size 11mm x 7mm Material D

All measurements made on single section bobbins

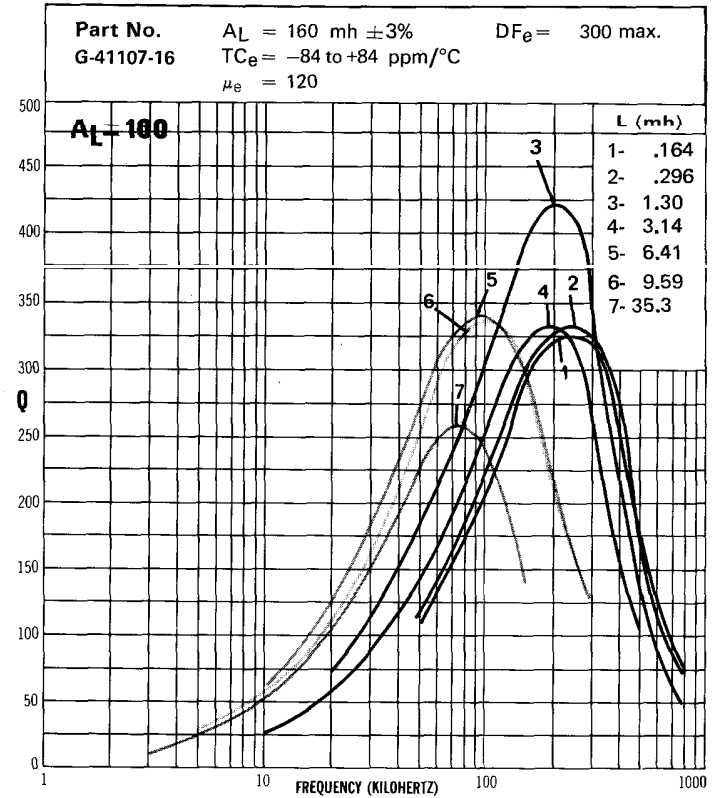
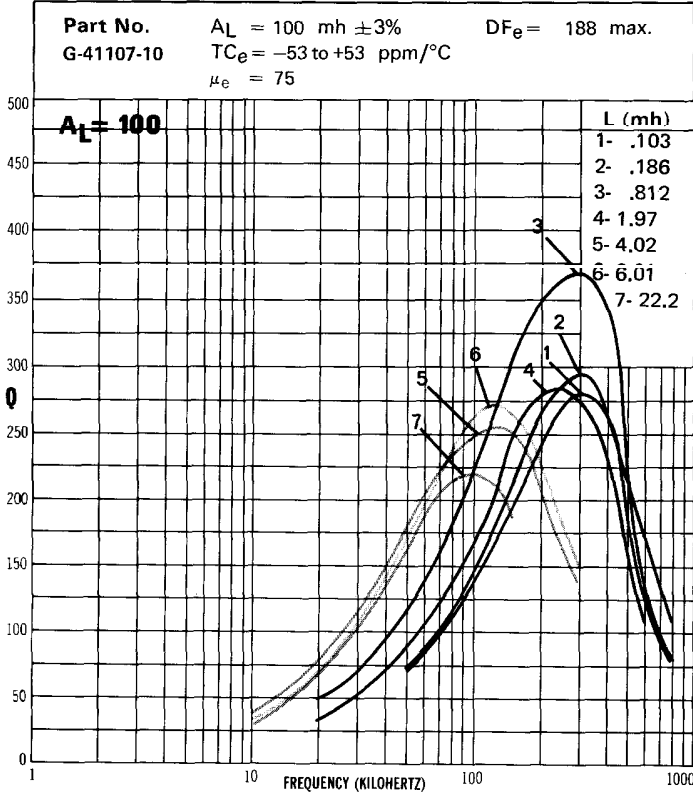
BOBBIN WINDING AREA (Per Section)	BOBBIN INFORMATION		
	Number	Turns	Wire
Single Sect. <u>.05</u> cm ²	1	32	30/44
	2	43	20/44
	3	90	12/44
	4	140	5/44
Double Sect. <u>.022</u> cm ²	5	200	#35
	6	245	#37
Triple Sect. <u>*</u>	7	470	#40
*Not available			



Core Size 11mm x 7mm Material G

All measurements made on single section bobbins

BOBBIN WINDING AREA (Per Section)	BOBBIN INFORMATION		
	Number	Turns	Wire
Single Sect. <u>.05</u> cm ²	1	32	30/44
	2	43	20/44
	3	90	12/44
Double Sect. <u>.022</u> cm ²	4	140	5/44
	5	200	#35
	6	245	#37
Triple Sect. <u>*</u>	7	470	#40
*Not available			

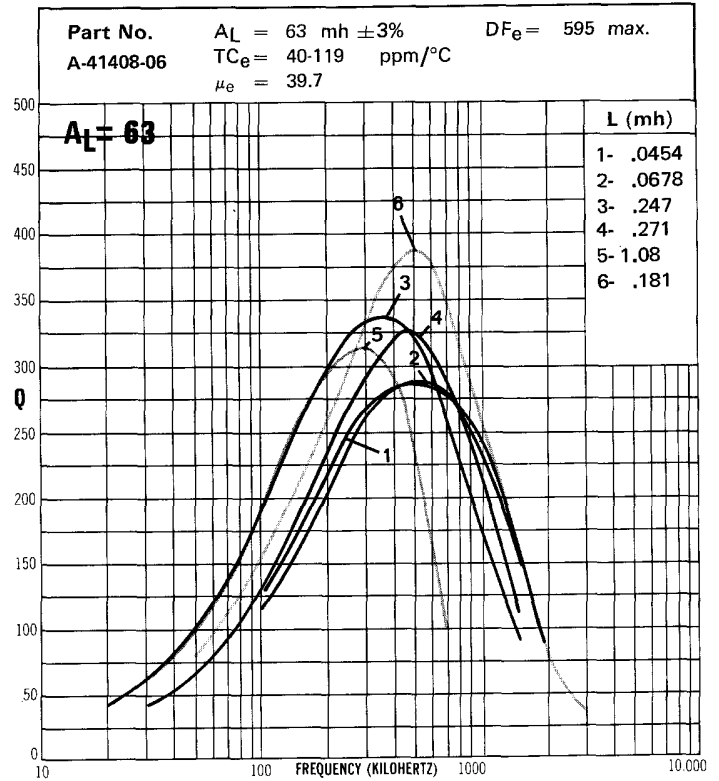
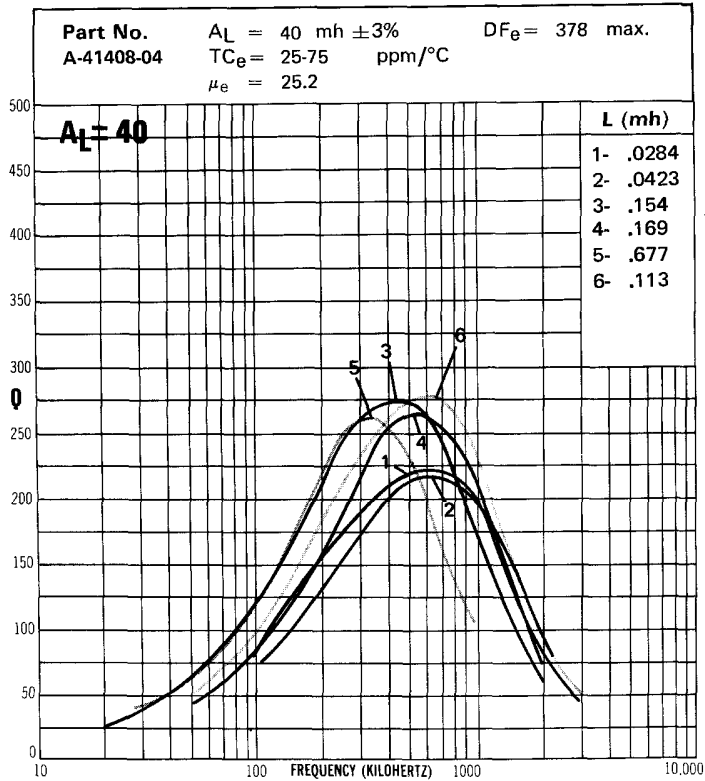


Core Size 14mm x 8mm Material A

All measurements made on single section bobbins except where noted.

BOBBIN WINDING AREA (Per Section)	BOBBIN INFORMATION		
	Number	Turns	Wire
Single Sect. <u>.098</u> cm ²	1	27	72/44
	2	33	40/44
	3	63	30/44
Double Sect. <u>.044</u> cm ²	4	66	20/44
	5	132	12/44
Triple Sect. <u>*</u>	6	54	30/44(D)

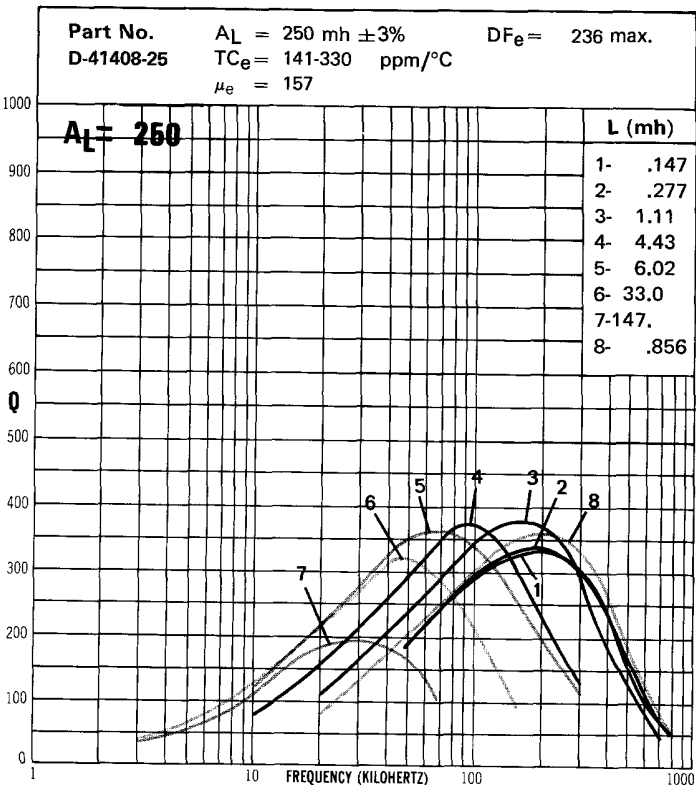
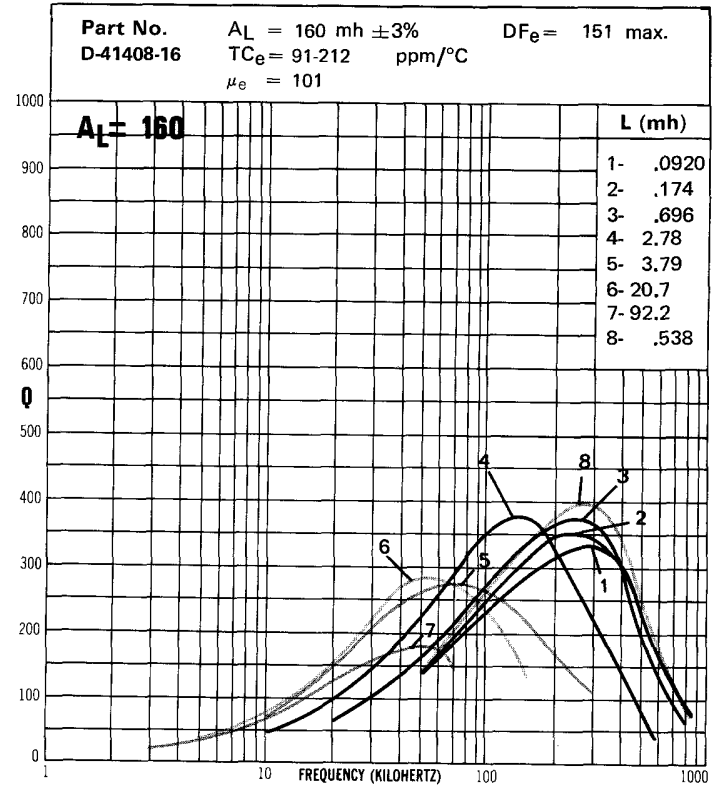
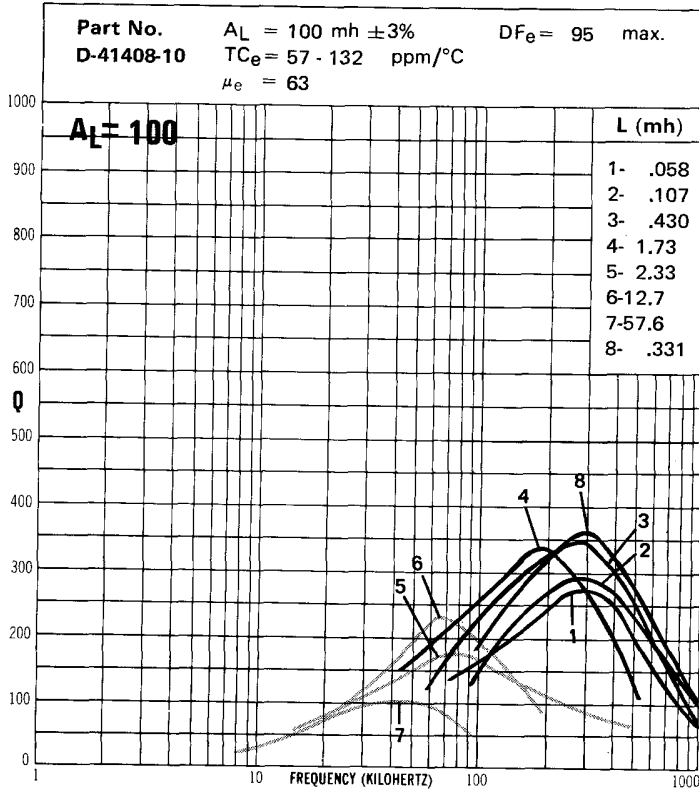
*Not available (D) Double Section



Core Size 14mm x 8mm Material D

All measurements made on single section bobbins except where noted.

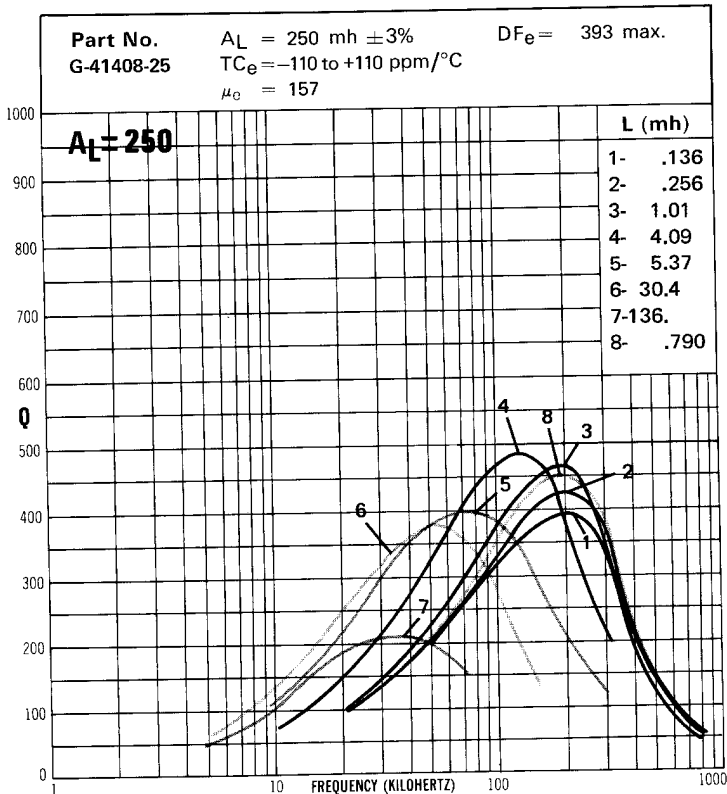
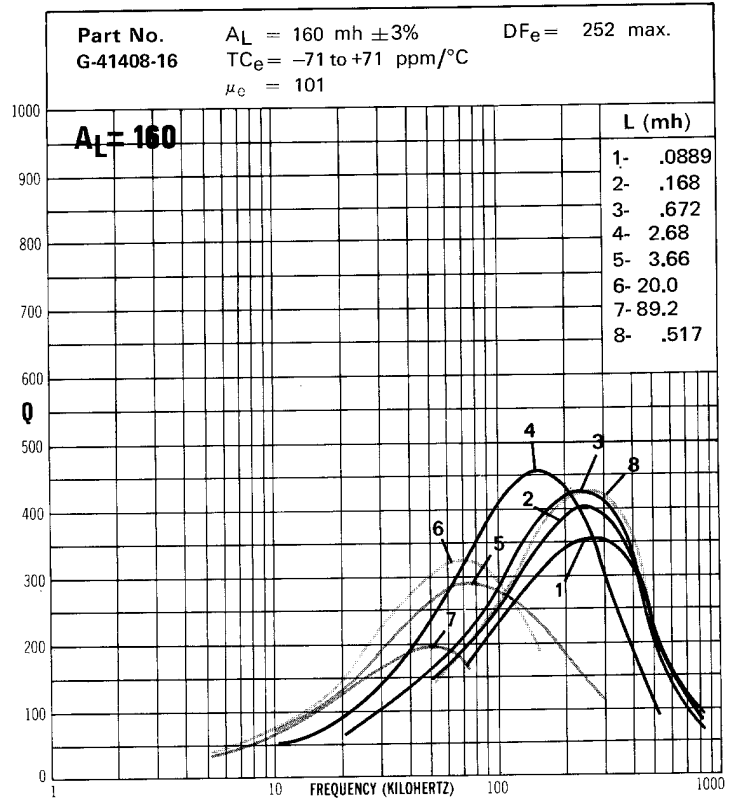
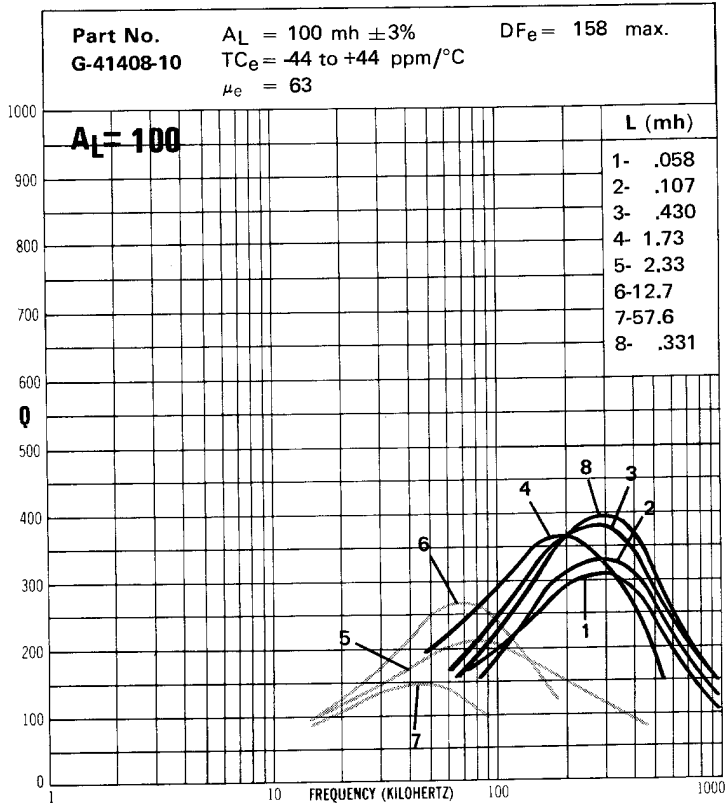
BOBBIN WINDING AREA (Per Section)	BOBBIN INFORMATION		
	Number	Turns	Wire
Single Sect. <u>.098</u> cm ²	1	24	80/44
	2	33	40/44
	3	66	20/44
Double Sect. <u>.044</u> cm ²	4	132	12/44
	5	154	#32
	6	360	#36
Triple Sect. <u>*</u>	7	760	#40
*Not available (D) Double Section	8	58	20/44(D)



Core Size 14mm x 8mm Material G

All measurements made on single section bobbins except where noted.

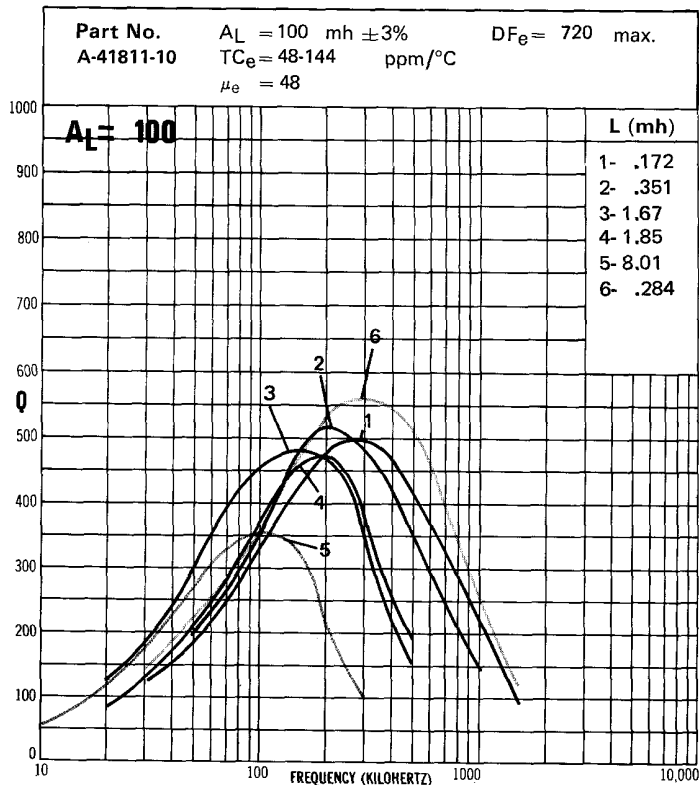
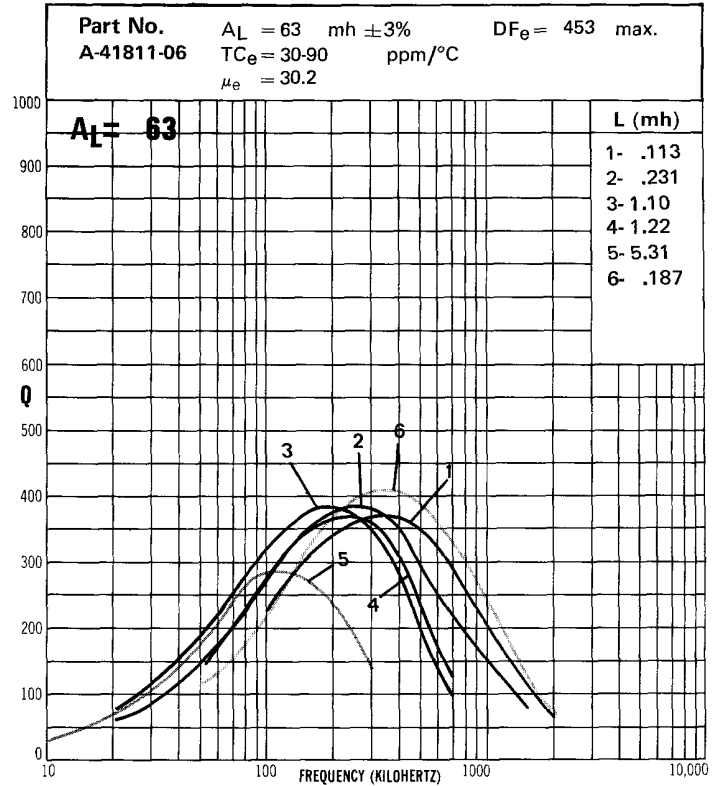
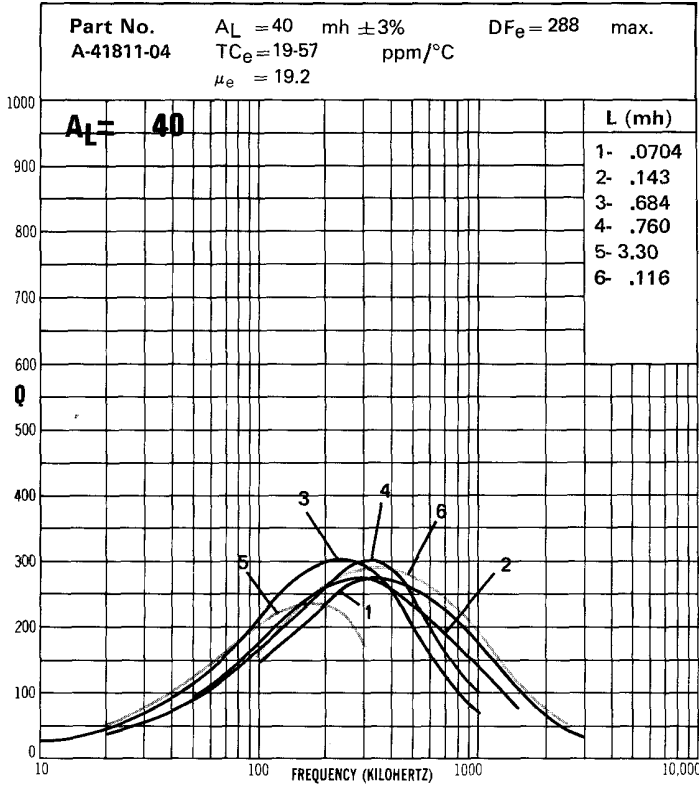
BOBBIN WINDING AREA (Per Section)	BOBBIN INFORMATION		
	Number	Turns	Wire
Single Sect. <u>.098</u> cm ²	1	24	80/44
	2	33	40/44
	3	66	20/44
Double Sect. <u>.044</u> cm ²	4	132	12/44
	5	154	#32
	6	360	#36
Triple Sect. <u>*</u>	7	760	#40
*Not available (D) Double Section	8	58	20/44(D)



Core Size 18mm x 11mm Material A

All measurements made on single section bobbins except where noted.

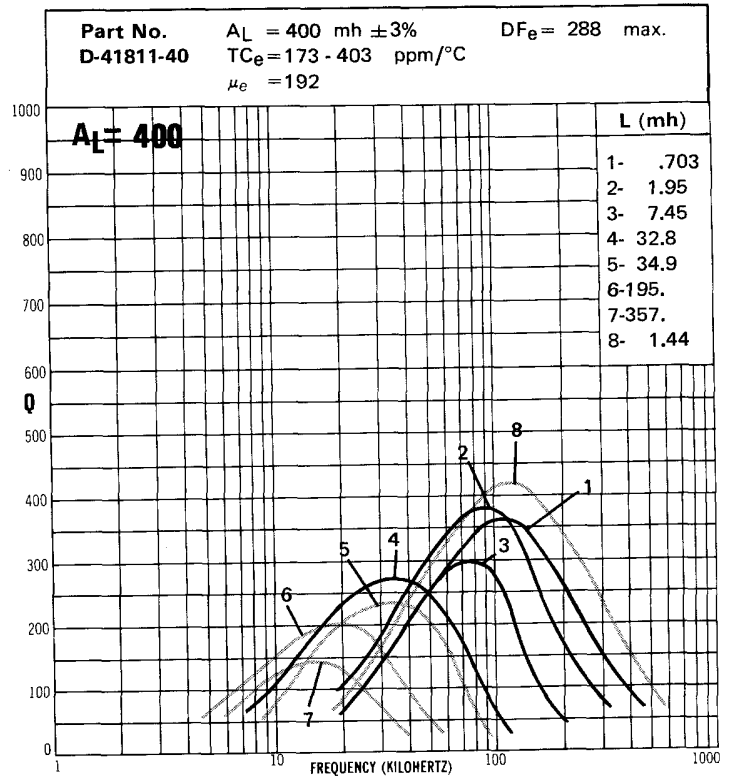
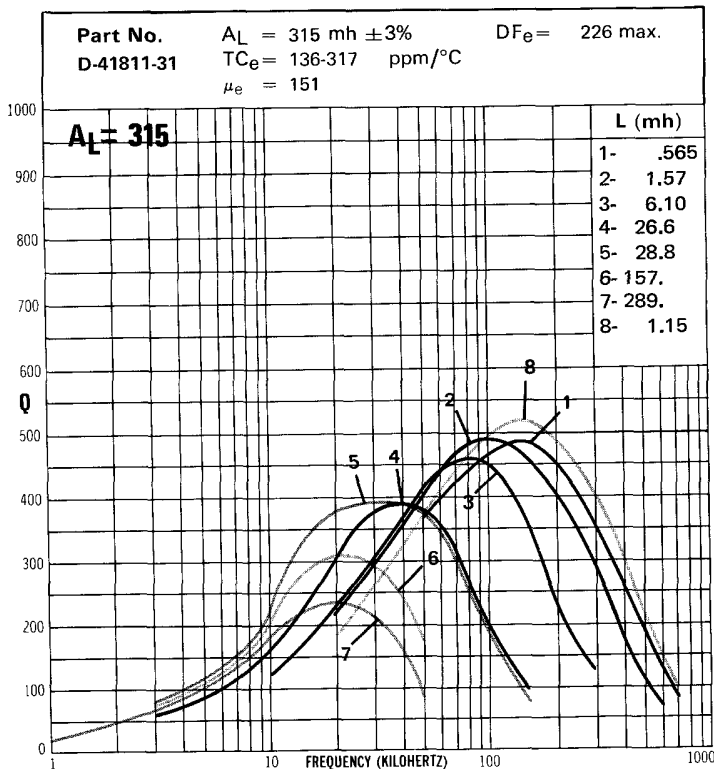
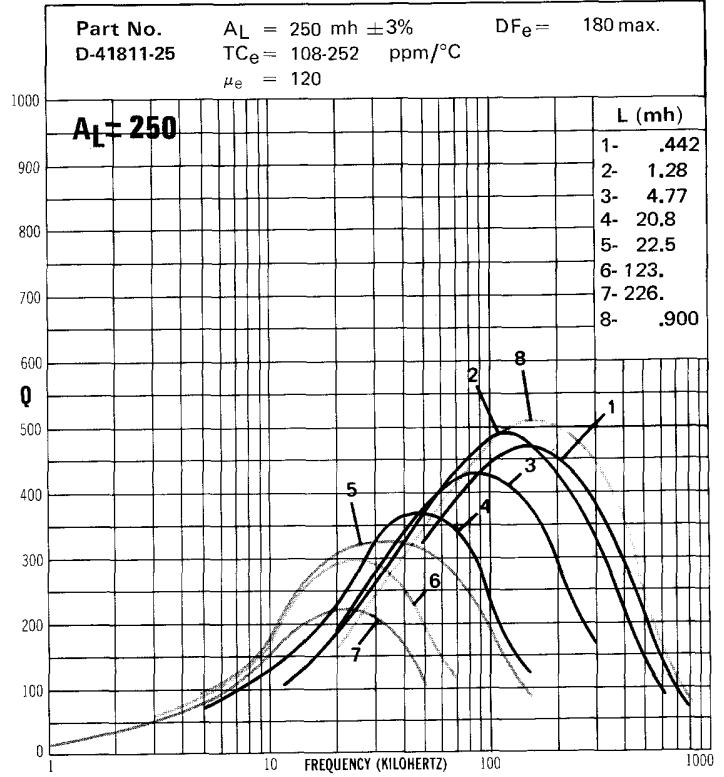
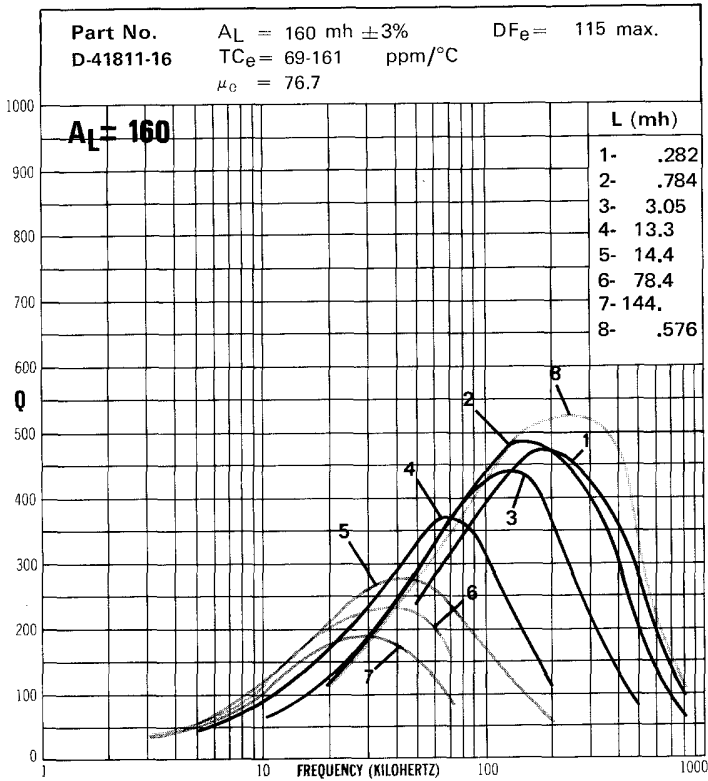
BOBBIN WINDING AREA (Per Section)	BOBBIN INFORMATION		
	Number	Turns	Wire
Single Sect. <u>.17</u> cm ²	1	42	80/44
	2	60	60/44
	3	131	30/44
Double Sect. <u>.084</u> cm ²	4	138	20/44
	5	288	12/44
Triple Sect. <u>.049</u> cm ²	6	54	60/44(D)
(D) Double Section			



Core Size 18mm x 11mm Material D

All measurements made on single section bobbins except where noted.

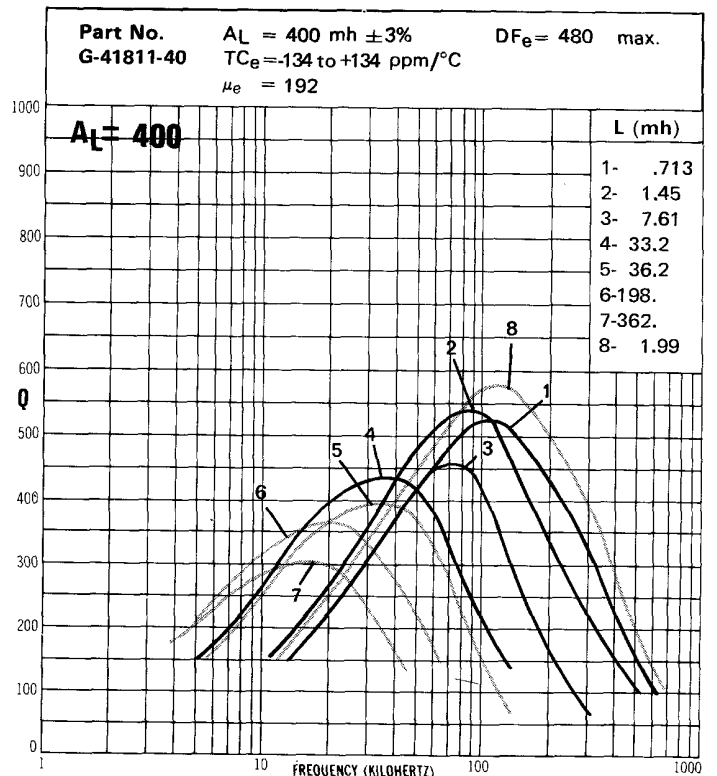
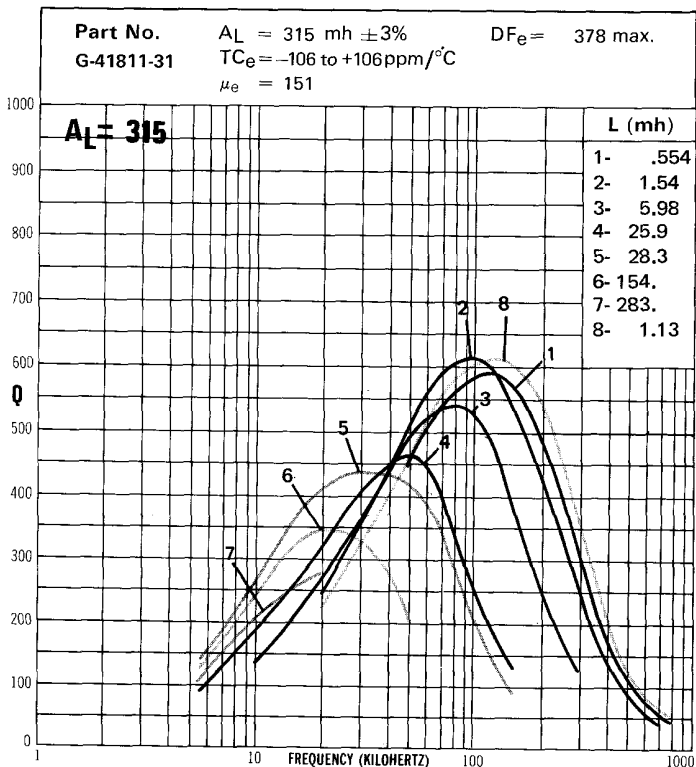
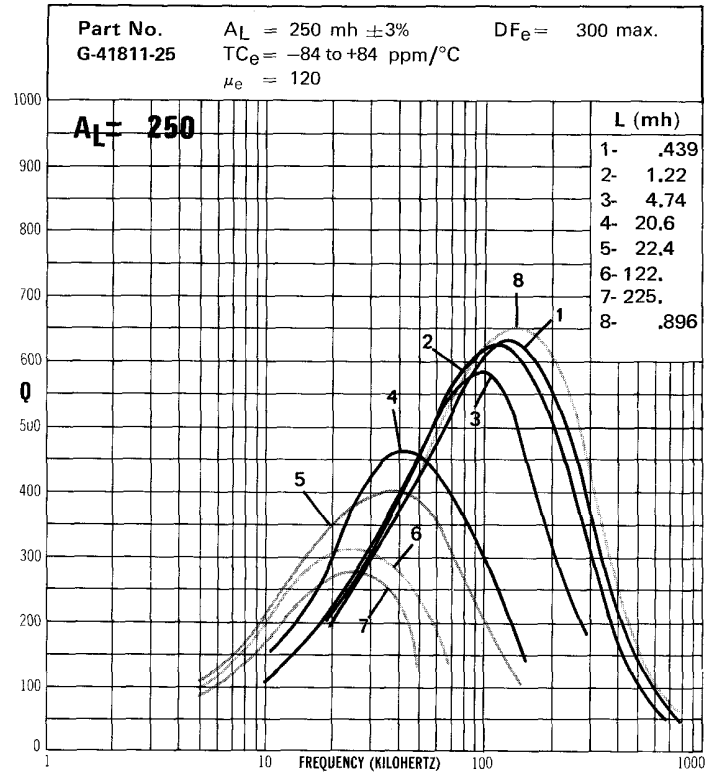
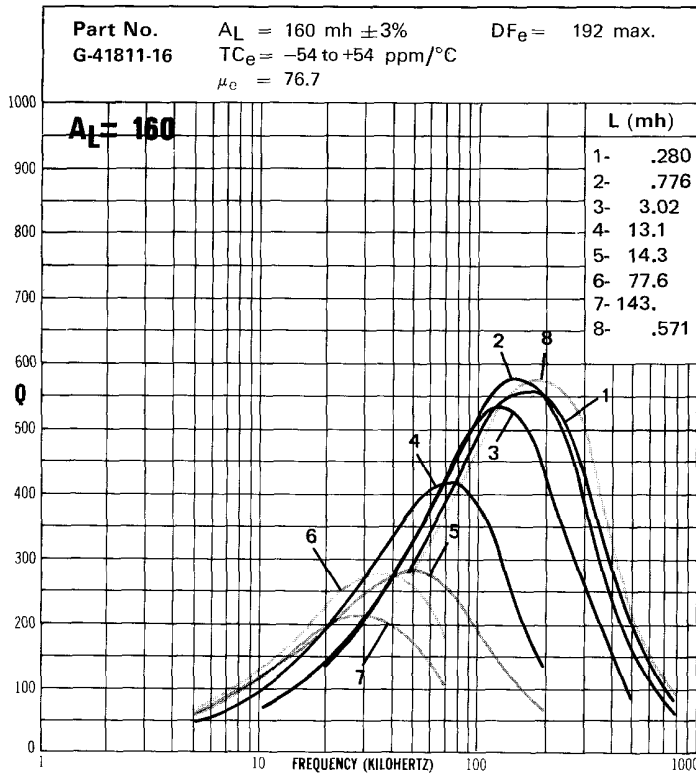
BOBBIN WINDING AREA (Per Section)	BOBBIN INFORMATION		
	Number	Turns	Wire
Single Sect. <u>.17</u> cm ²	1	42	80/44
	2	70	40/44
	3	138	20/44
Double Sect. <u>.084</u> cm ²	4	288	12/44
	5	300	#32
	6	700	#36
Triple Sect. <u>.049</u> cm ²	7	950	#38
(D) Double Section	8	60	40/44(D)



Core Size 18mm x 11mm Material G

All measurements made on single section bobbins except where noted.

BOBBIN WINDING AREA (Per Section)	BOBBIN INFORMATION		
	Number	Turns	Wire
Single Sect. <u>.17</u> cm ²	1	42	80/44
	2	70	40/44
	3	138	20/44
Double Sect. <u>.084</u> cm ²	4	288	12/44
	5	300	#32
	6	700	#36
Triple Sect. <u>.049</u> cm ²	7	950	#38
(D) Double Section	8	60	40/44(D)

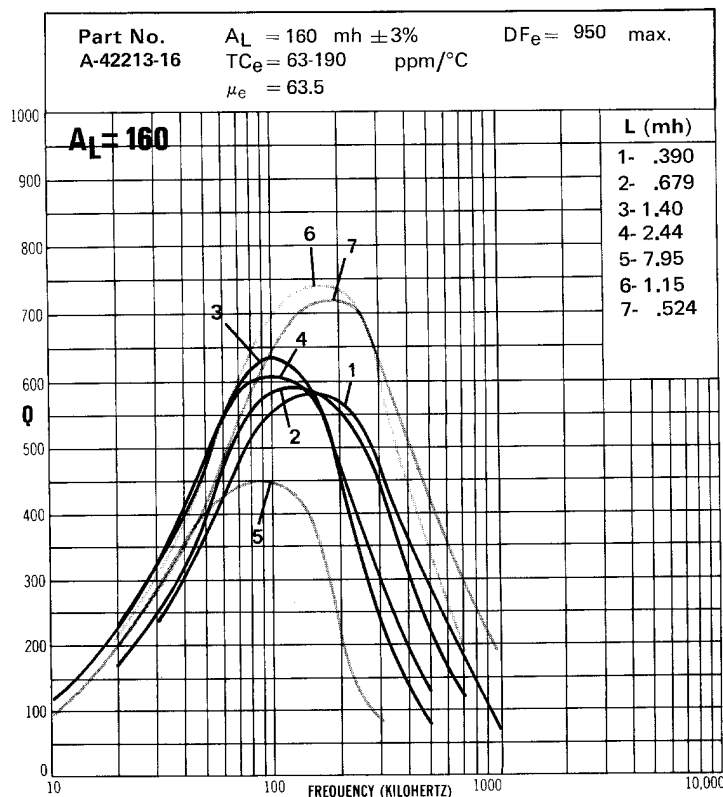
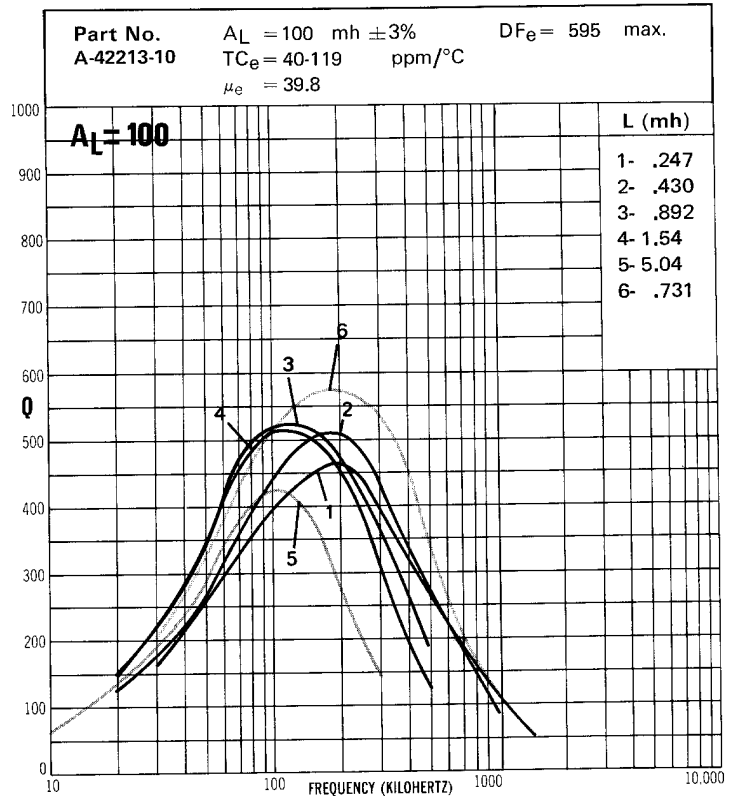
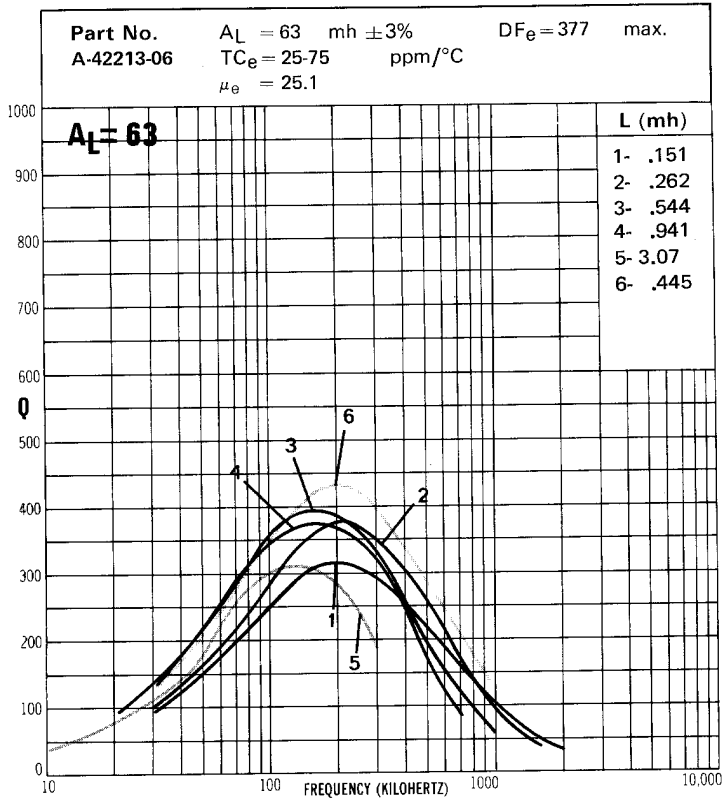


Core Size 22mm x 13mm Material A

All measurements made on single section bobbins except where noted.

BOBBIN WINDING AREA (Per Section)	BOBBIN INFORMATION		
	Number	Turns	Wire
Single Sect. <u>.292</u> cm ²	1	50	100/44
	2	66	80/44
	3	95	60/44
Double Sect. <u>.138</u> cm ²	4	125	40/44
	5	226	20/44
Triple Sect. <u>.087</u> cm ²	6	86	60/44(D)
	7	58	80/44(D)

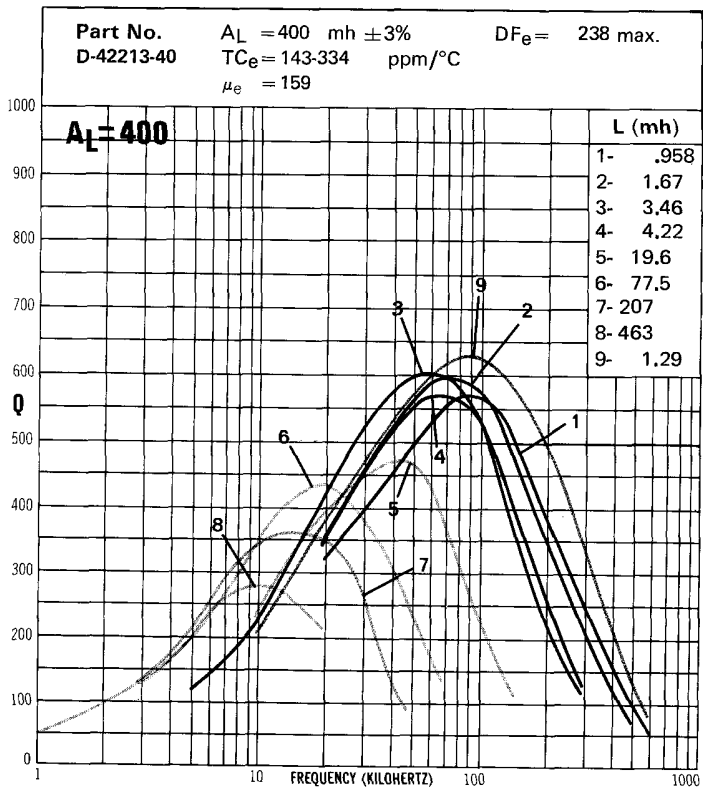
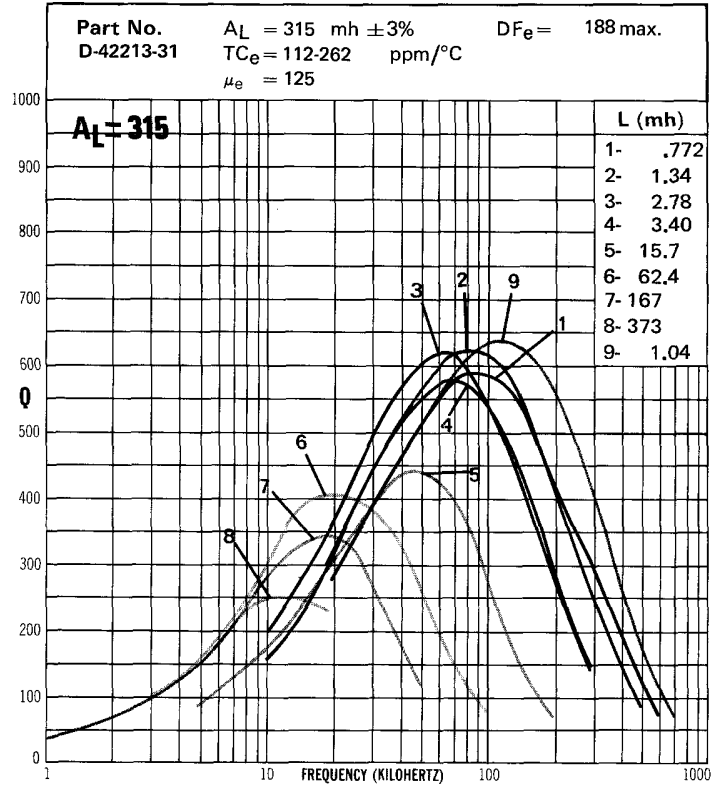
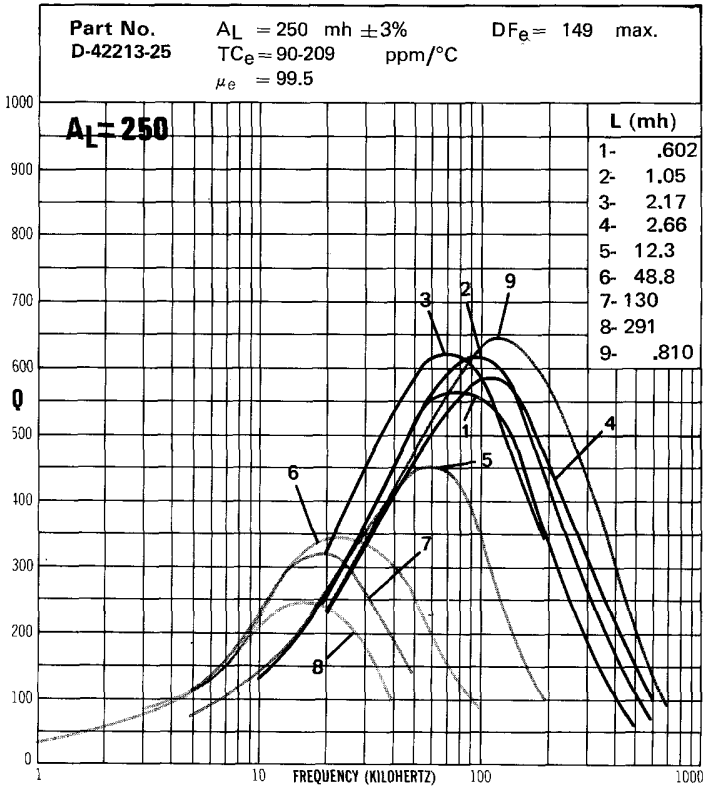
(D) Double section



Core Size 22mm x 13mm Material D

All measurements made on single section bobbins except where noted.

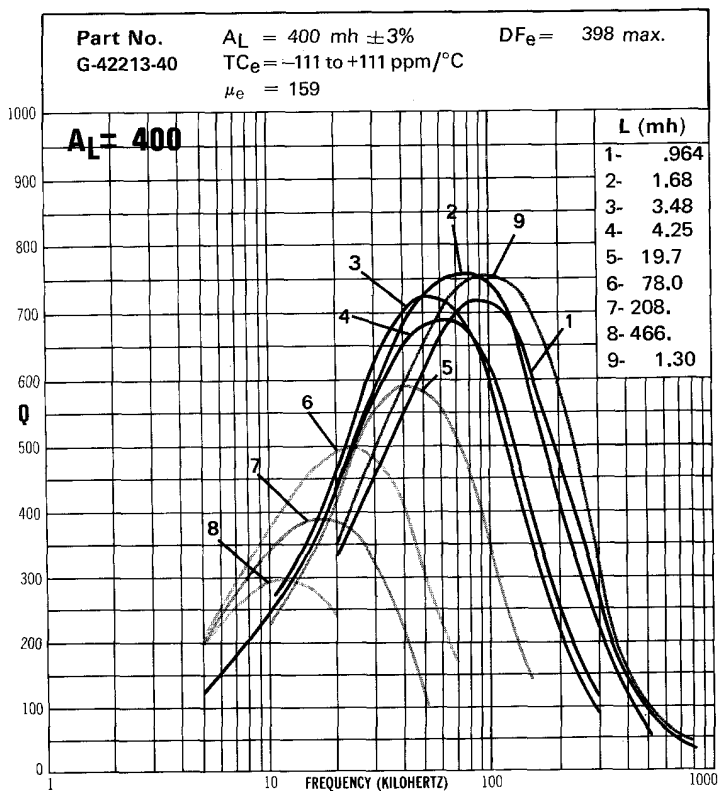
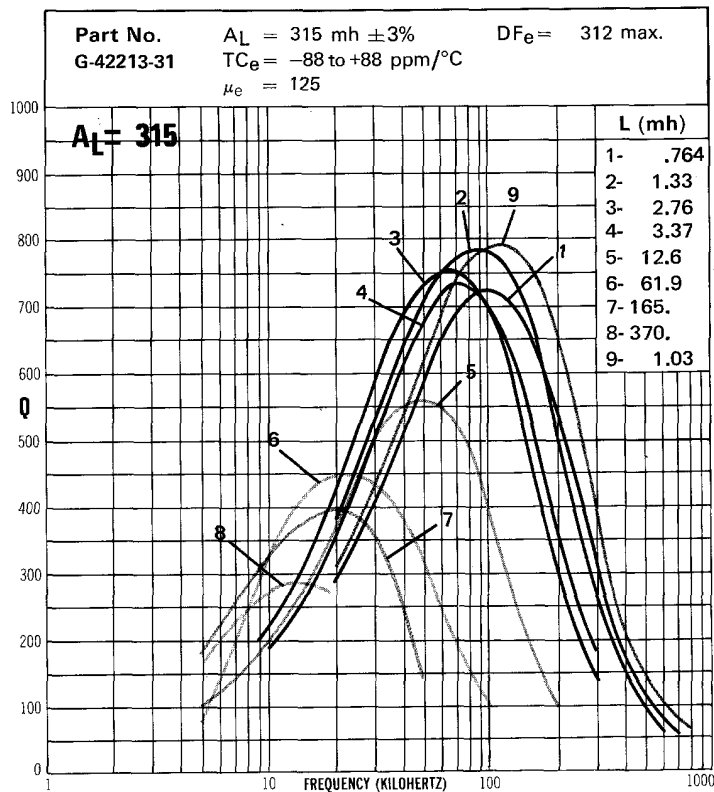
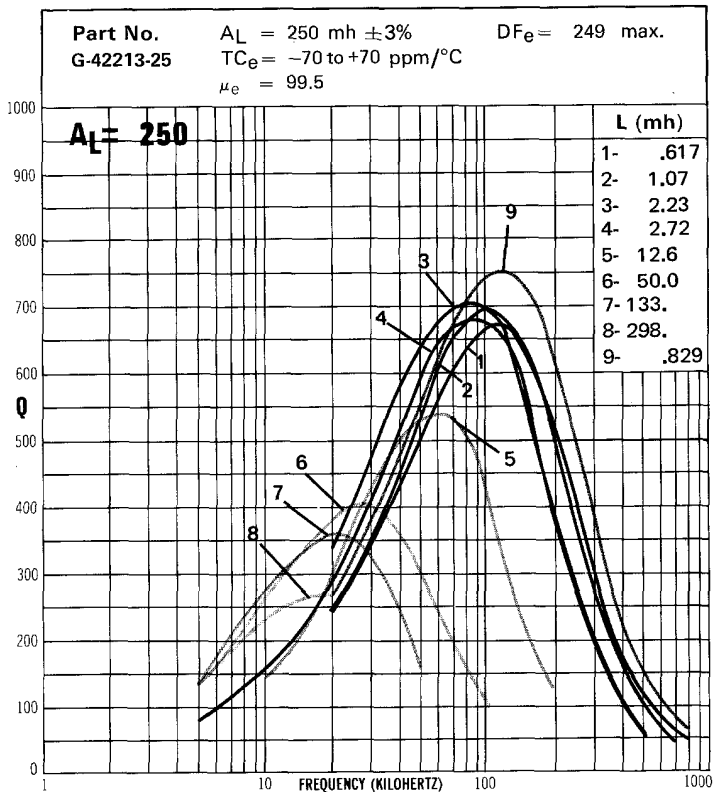
BOBBIN WINDING AREA (Per Section)	BOBBIN INFORMATION		
	Number	Turns	Wire
Single Sect. <u>.292</u> cm ²	1	50	100/44
	2	66	80/44
	3	95	60/44
Double Sect. <u>.138</u> cm ²	4	105	40/44
	5	226	20/44
	6	450	#32
Triple Sect. <u>.087</u> cm ²	7	735	#34
	8	1100	#36
(D) Double Section	9	58	80/44(D)



Core Size 22mm x 13mm Material G

All measurements made on single section bobbins except where noted.

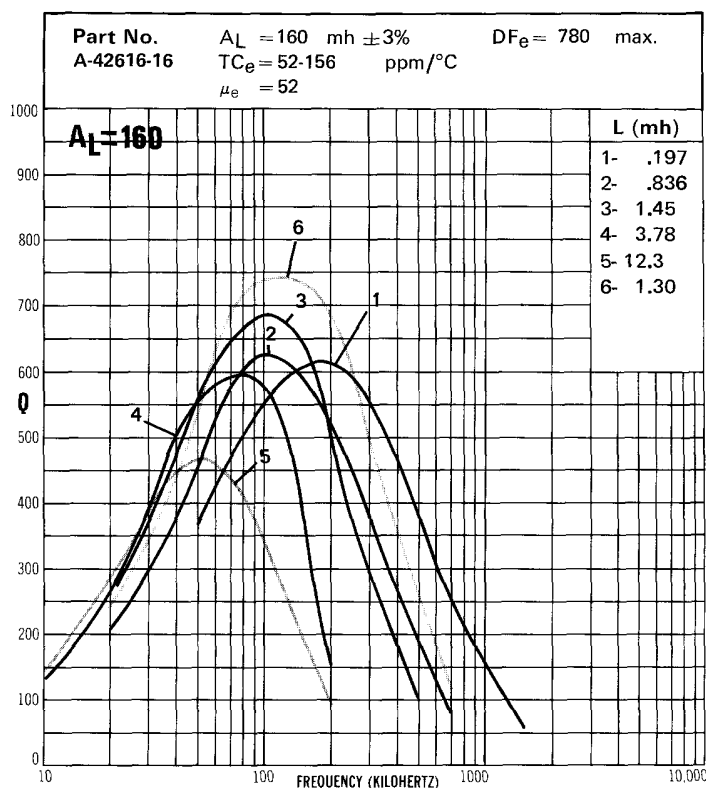
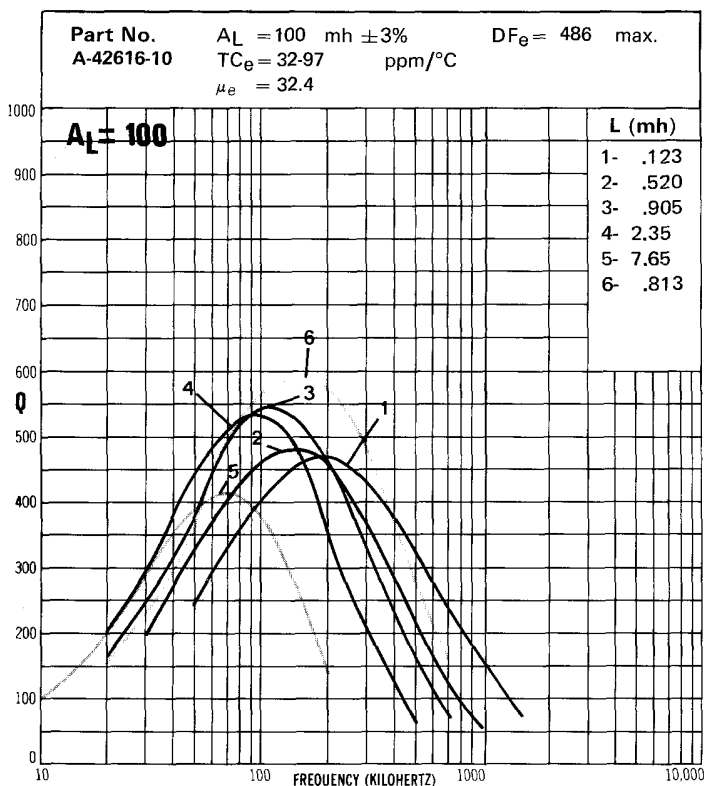
BOBBIN WINDING AREA (Per Section)		BOBBIN INFORMATION		
		Number	Turns	Wire
Single Sect	.292 cm ²	1	50	100/44
		2	66	80/44
		3	95	60/44
		4	105	40/44
Double Sect	.138 cm ²	5	226	20/44
		6	450	#32
Triple Sect	.087 cm ²	7	735	#34
		8	1100	#36
	(D) Double Section	9	58	80/44(D)



Core Size 26mm x 16mm Material A

All measurements made on single section bobbins except where noted.

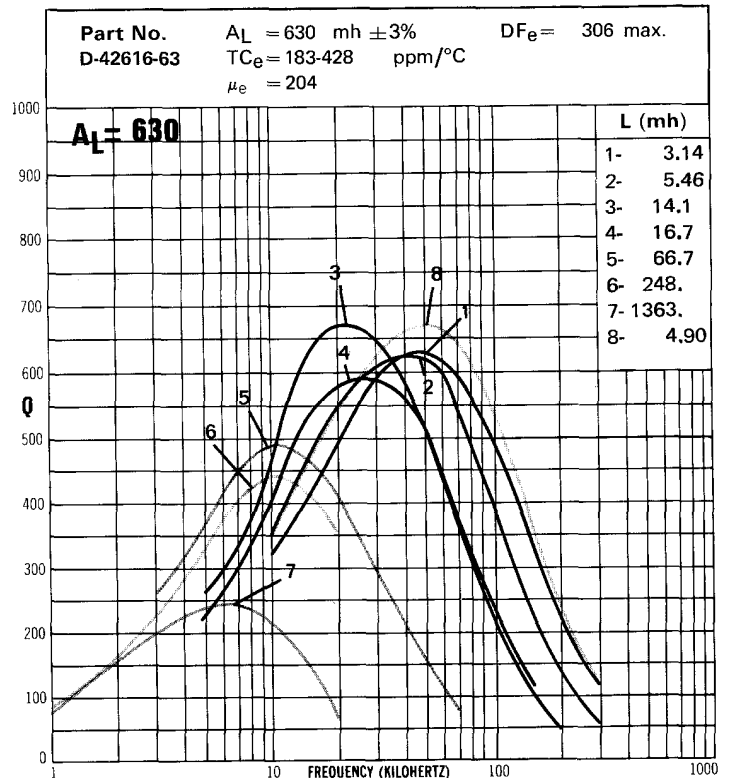
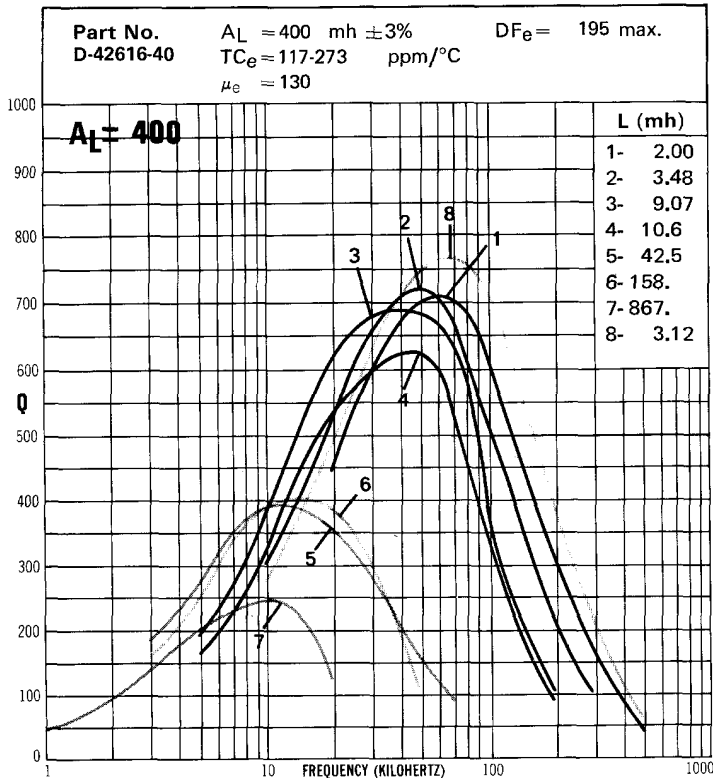
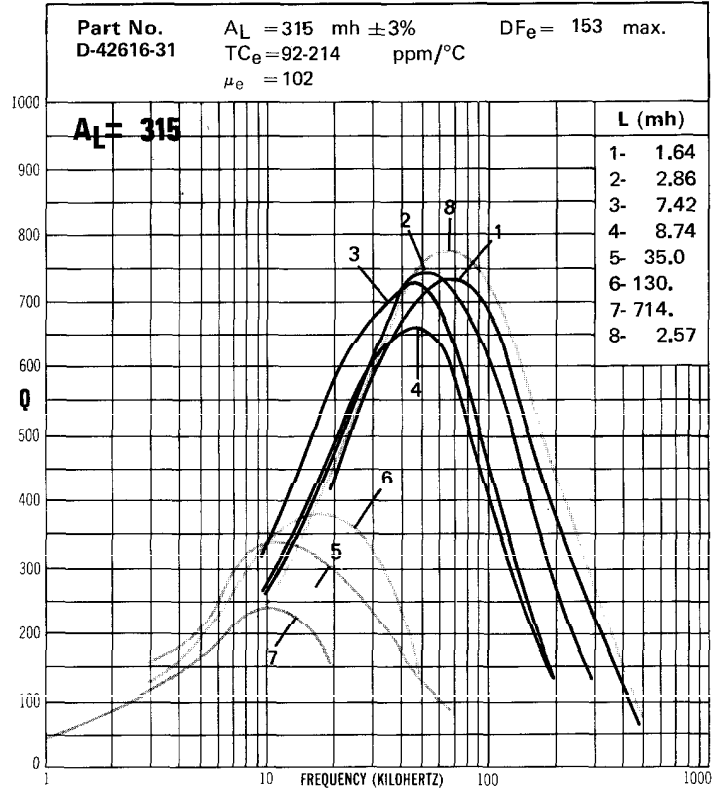
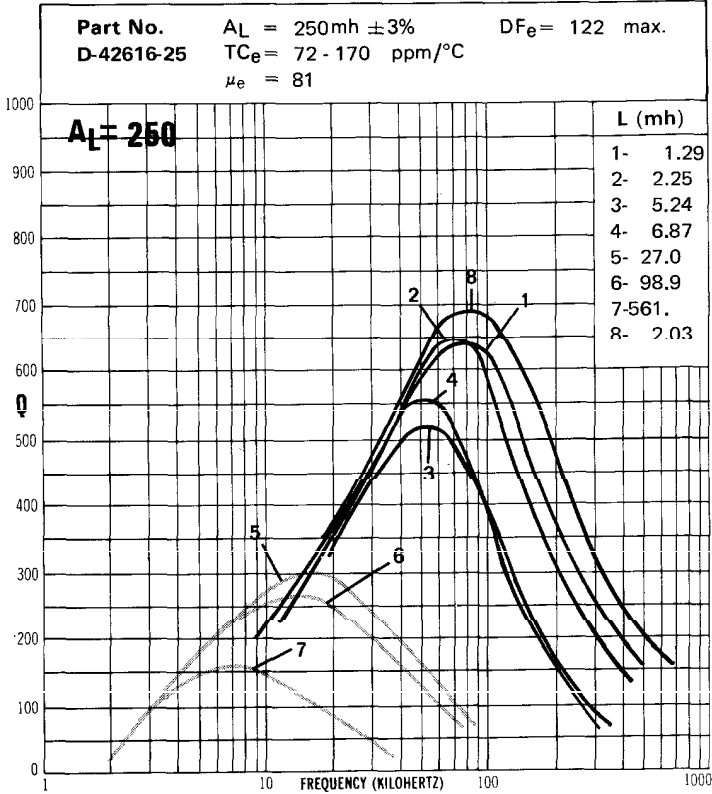
BOBBIN WINDING AREA (Per Section)	BOBBIN INFORMATION		
	Number	Turns	Wire
Single Sect. <u>.421</u> cm ²	1	35	180/44
Double Sect. <u>.202</u> cm ²	2	72	100/44
Triple Sect. <u>.128</u> cm ²	3	95	80/44
	4	153	60/44
	5	276	30/44
(D) Double Section	6	90	80/44(D)



Core Size 26mm x 16mm Material D

All measurements made on single section bobbins except where noted.

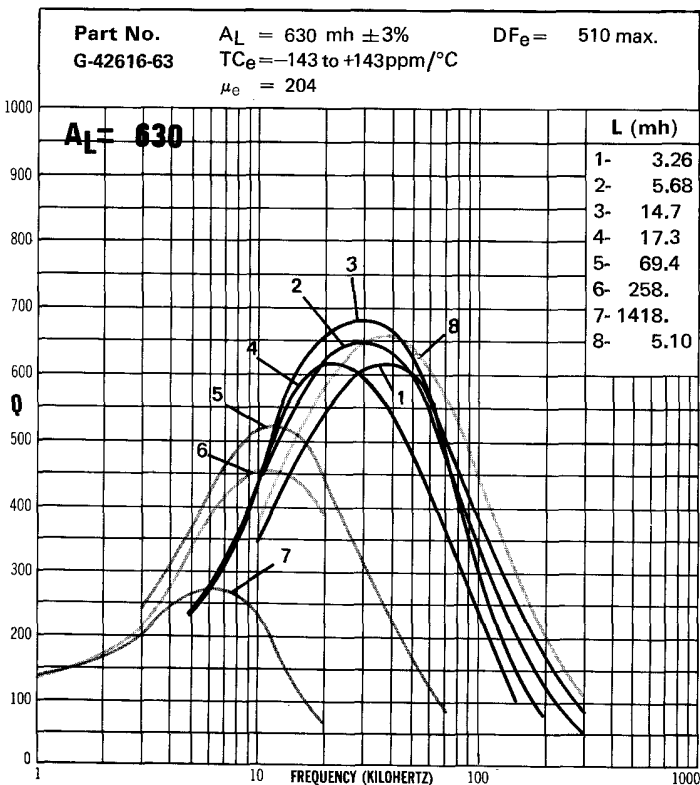
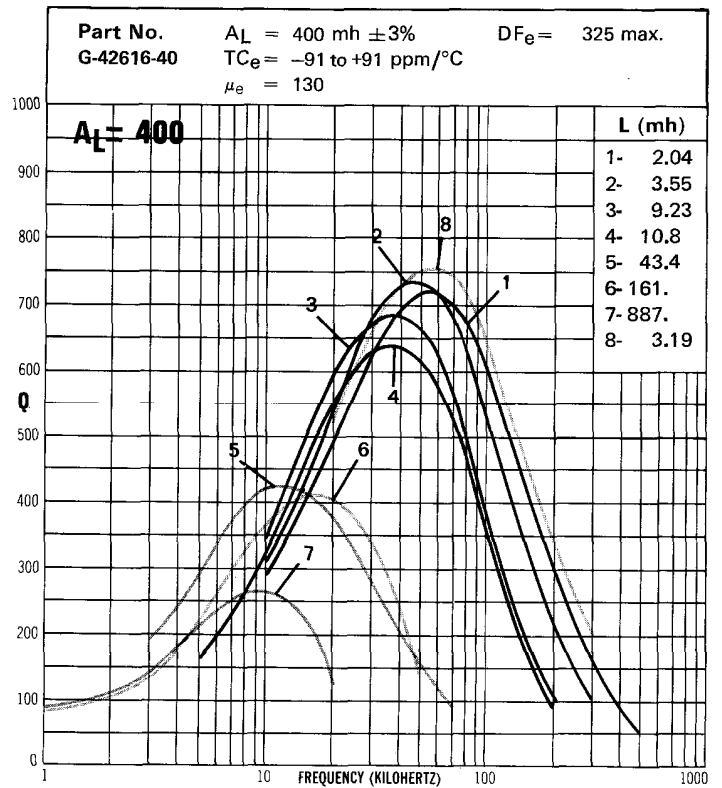
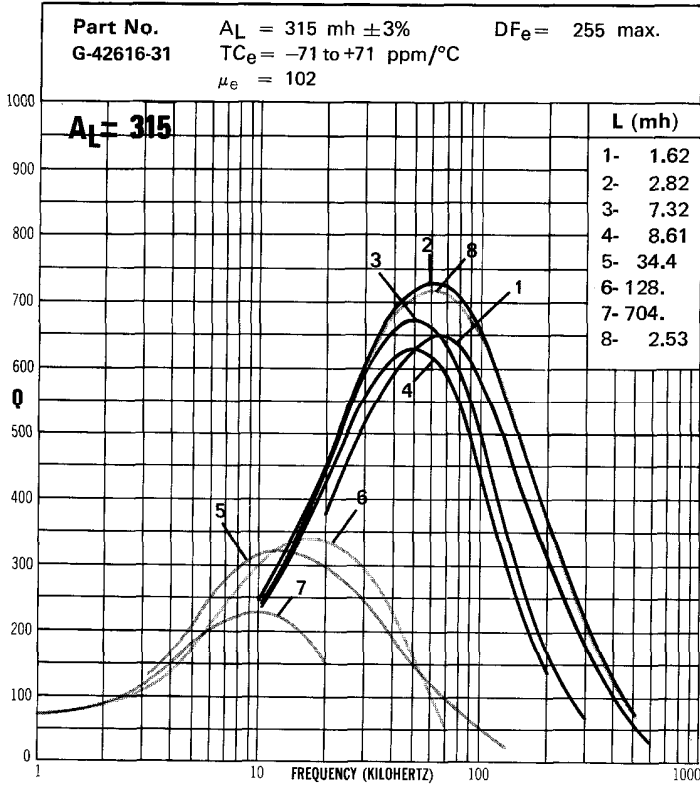
BOBBIN WINDING AREA (Per Section)	BOBBIN INFORMATION		
	Number	Turns	Wire
Single Sect. <u>.421</u> cm ²	1	72	100/44
	2	95	80/44
	3	153	60/44
	4	166	40/44
Double Sect. <u>.202</u> cm ²	5	332	#28
	6	640	#32
Triple Sect. <u>.128</u> cm ²	7	1500	#36
(D) Double Section	8	90	80/44(D)



Core Size 26mm x 16mm Material G

All measurements made on single section bobbins except where noted.

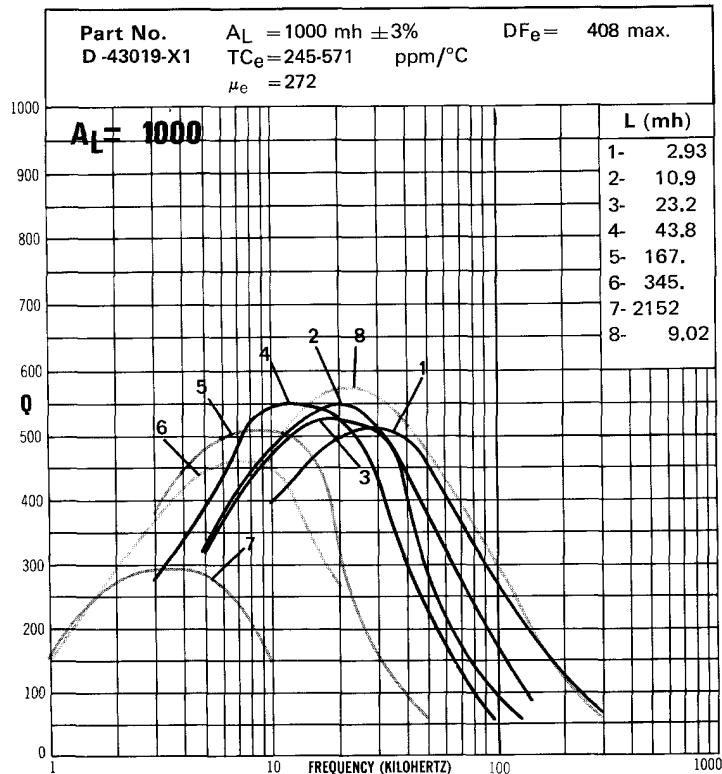
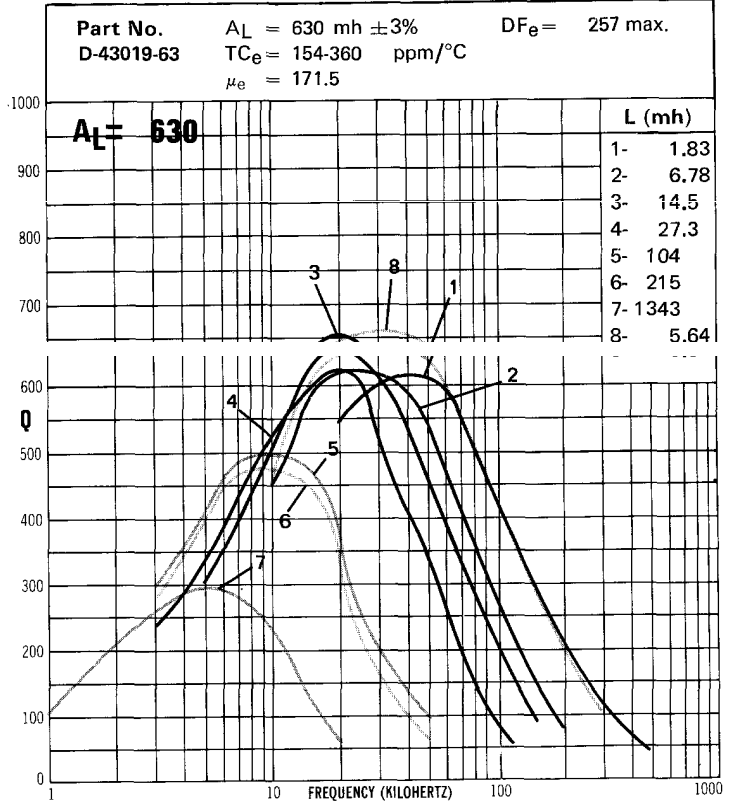
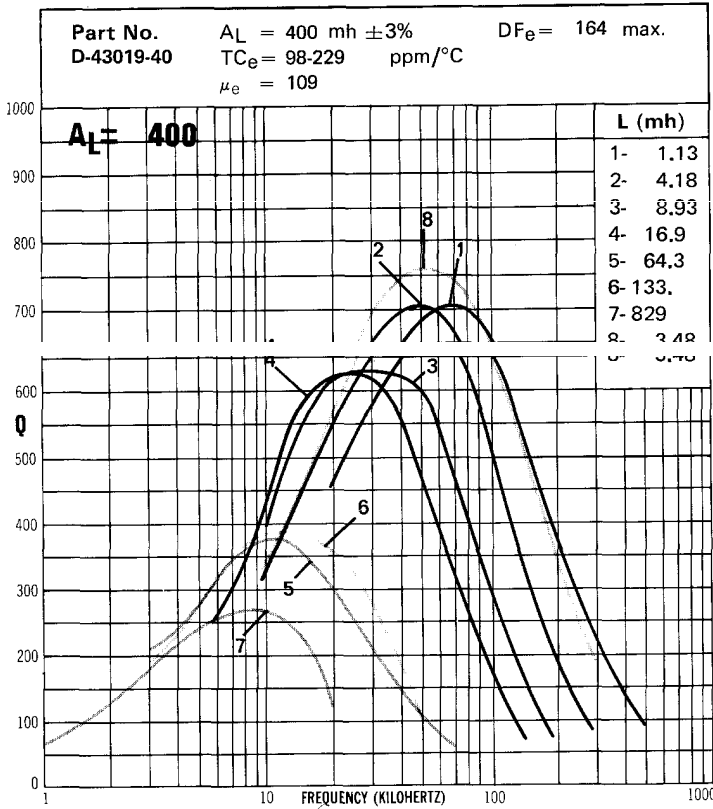
BOBBIN WINDING AREA (Per Section)	BOBBIN INFORMATION		
	Number	Turns	Wire
Single Sect. <u>.421</u> cm ²	1	72	100/44
	2	95	80/44
	3	153	60/44
Double Sect. <u>.202</u> cm ²	4	166	40/44
	5	332	#28
	6	640	#32
Triple Sect. <u>.128</u> cm ²	7	1500	#36
(D) Double Section	8	90	80/44(D)



Core Size 30mm x 19mm Material D

All measurements made on single section bobbins except where noted.

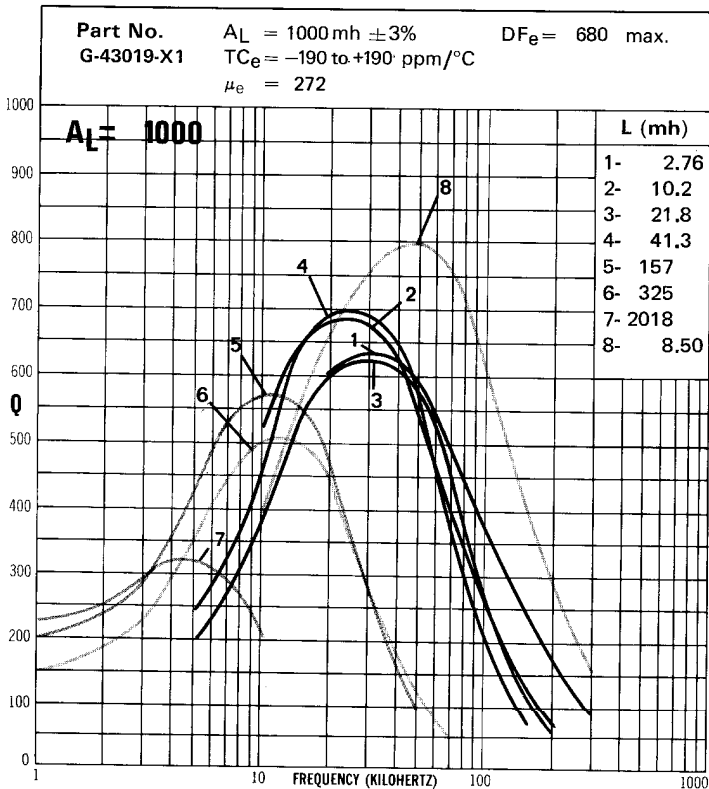
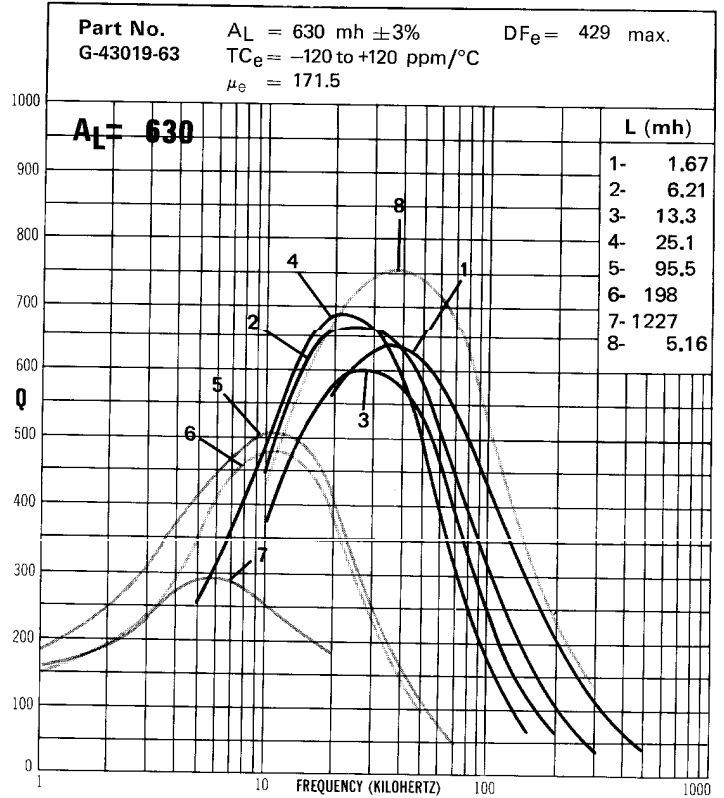
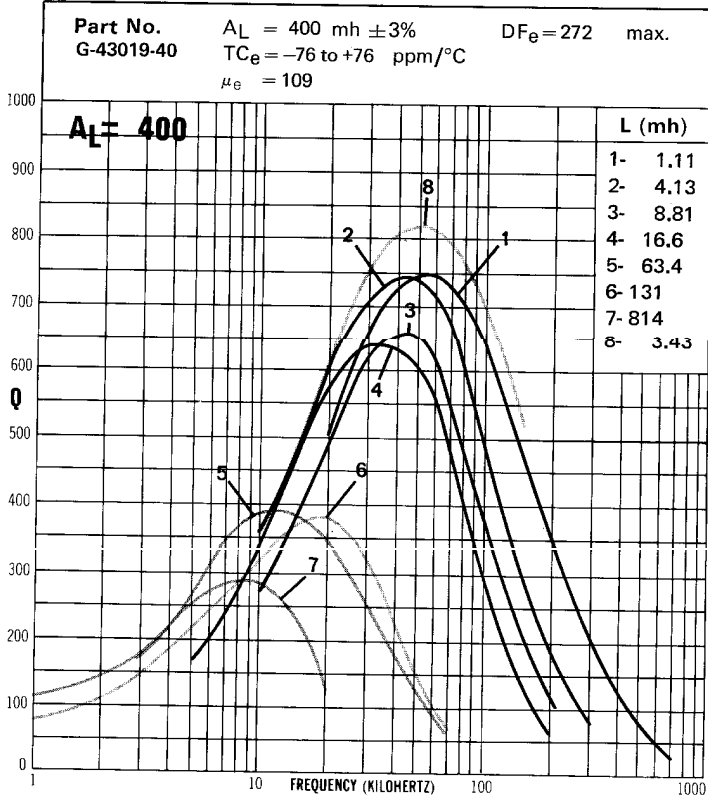
BOBBIN WINDING AREA (Per Section)	BOBBIN INFORMATION		
	Number	Turns	Wire
Single Sect. <u>.542</u> Cm ²	1	53	180/44
	2	102	100/44
	3	149	80/44
	4	205	60/44
Double Sect. <u>.254</u> cm ²	5	400	#28
	6	575	#30
Triple Sect. <u>.159</u> cm ²	7	1433	#34
	(D) Double Section	8	93



Core Size 30mm x 19mm Material G

All measurements made on single section bobbins except where noted.

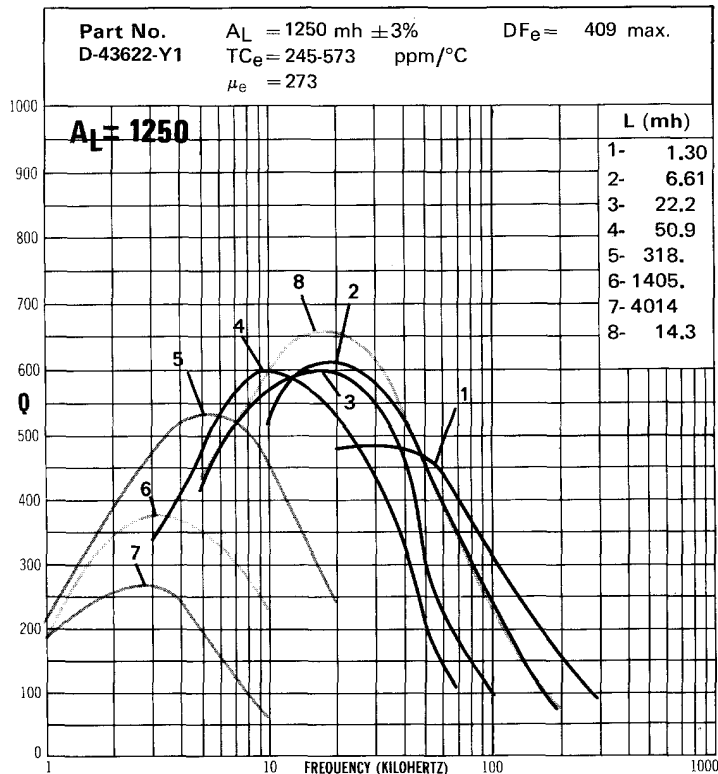
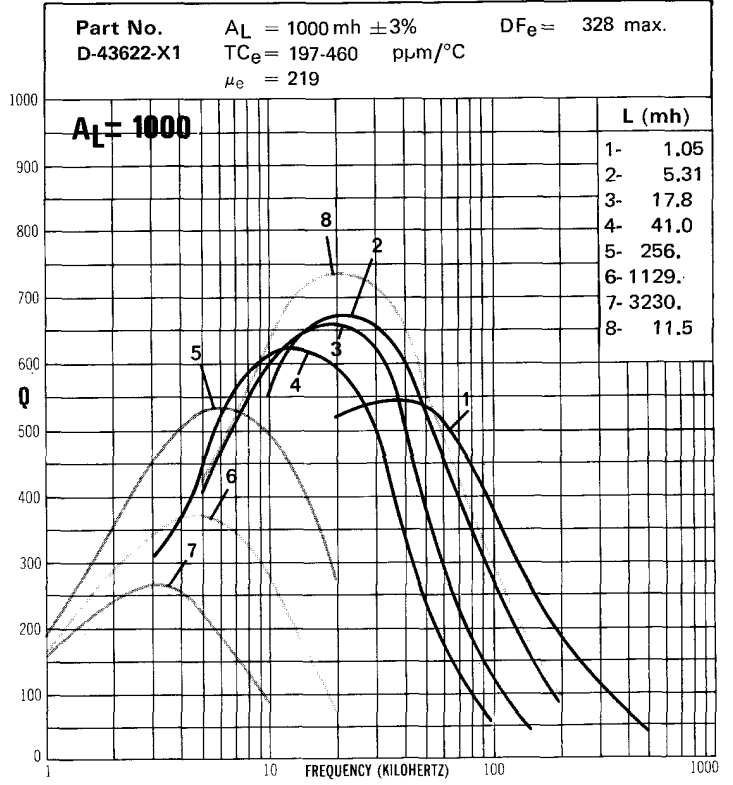
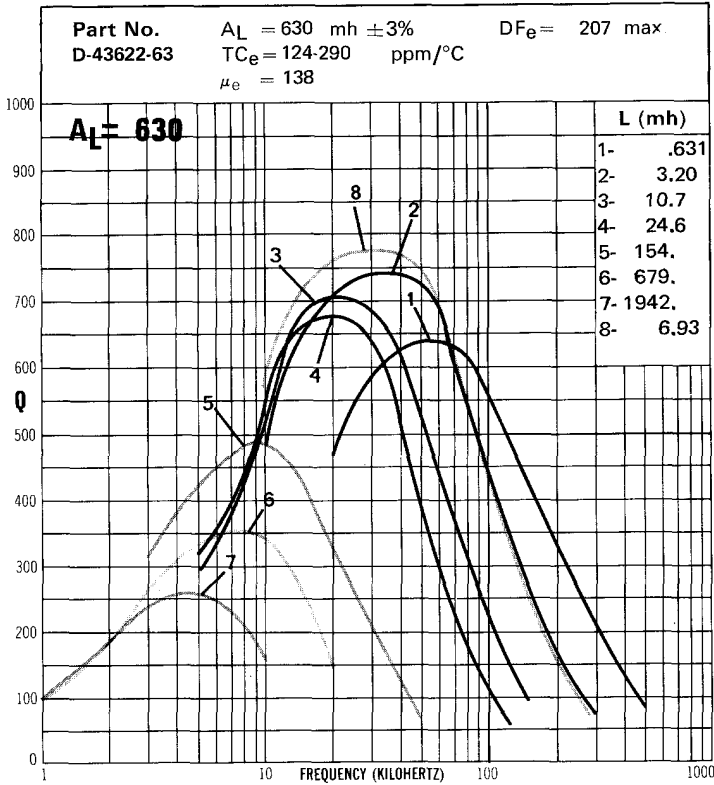
BOBBIN WINDING AREA (Per Section)	BOBBIN INFORMATION		
	Number	Turns	Wire
Single Sect. <u>.542</u> cm ²	1	53	180/44
	2	102	100/44
	3	149	80/44
Double Sect. <u>.254</u> cm ²	4	205	60/44
	5	400	#28
	6	575	#30
Triple Sect. <u>.159</u> cm ²	7	1433	#34
(D) Double Section	8	93	120/44(D)



Core Size 36mm x 22mm Material D

All measurements made on single section bobbins except where noted.

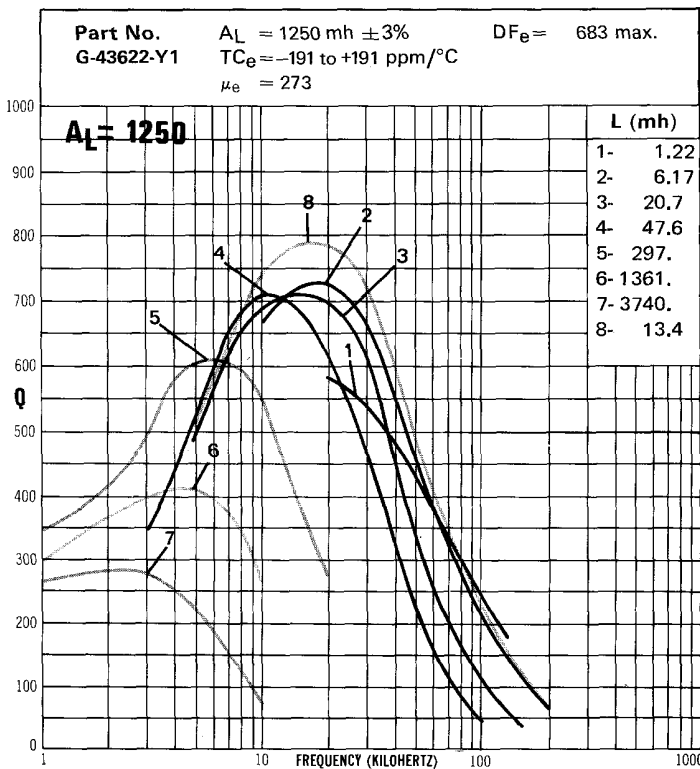
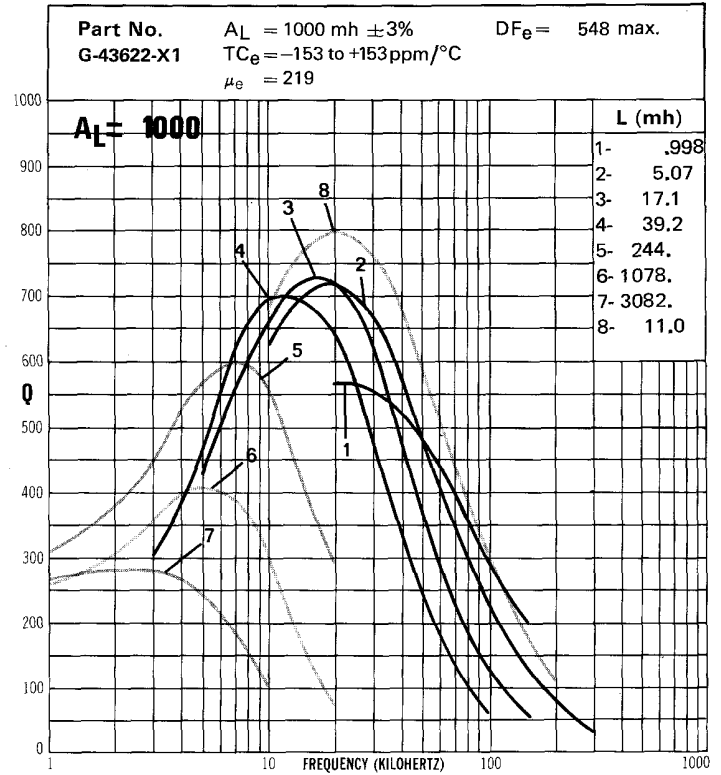
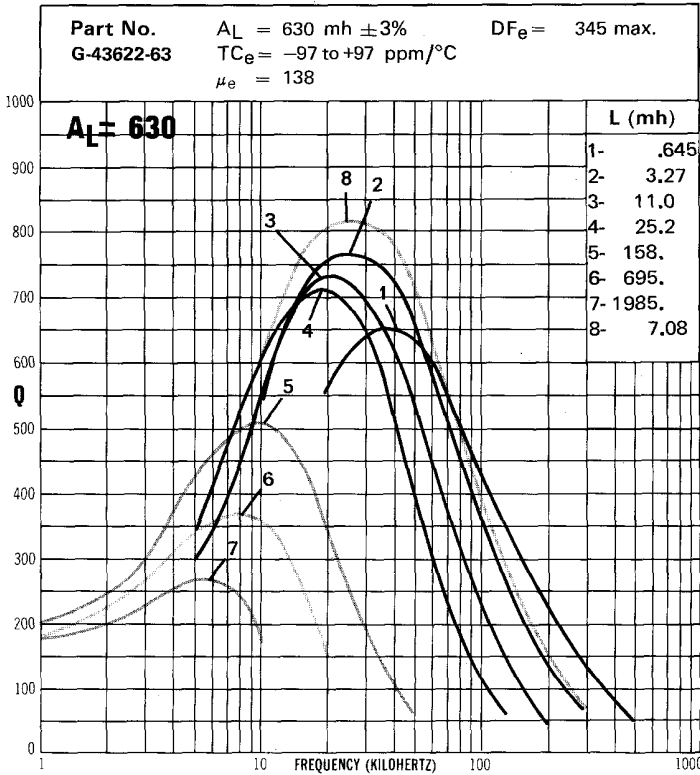
BOBBIN WINDING AREA (Per Section)	BOBBIN INFORMATION		
	Number	Turns	Wire
Single Sect. <u>.755</u> cm ²	1	32	360/44
	2	72	180/44
	3	132	100/44
Double Sect. <u>.357</u> cm ²	4	200	72/44
	5	500	#28
	6	1050	#32
Triple Sect. <u>.225</u> cm ²	7	1775	#34
(D) Double Section	8	106	150/44(D)



Core Size 36mm x 22mm Material G

All measurements made on single section bobbins except where noted.

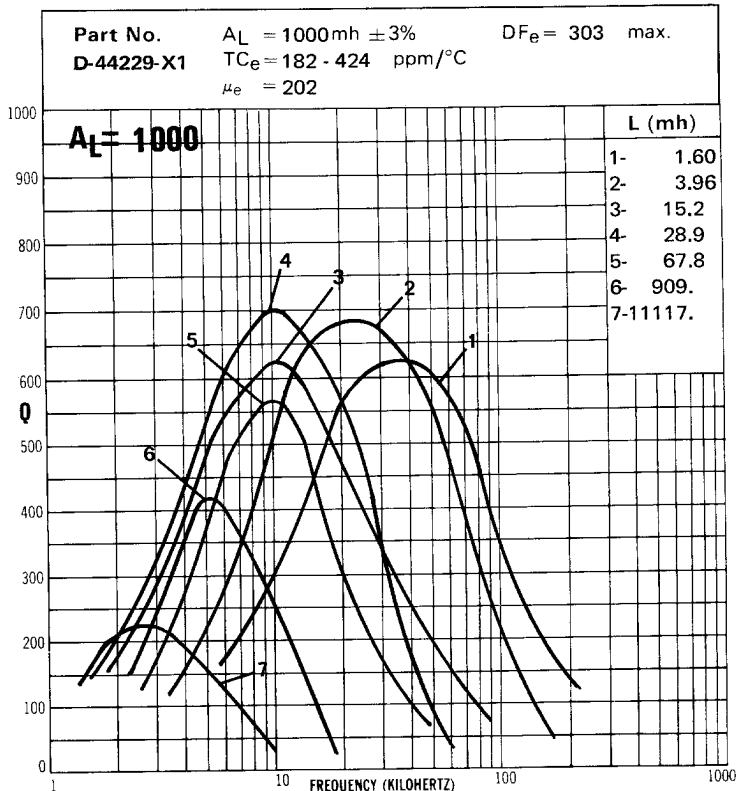
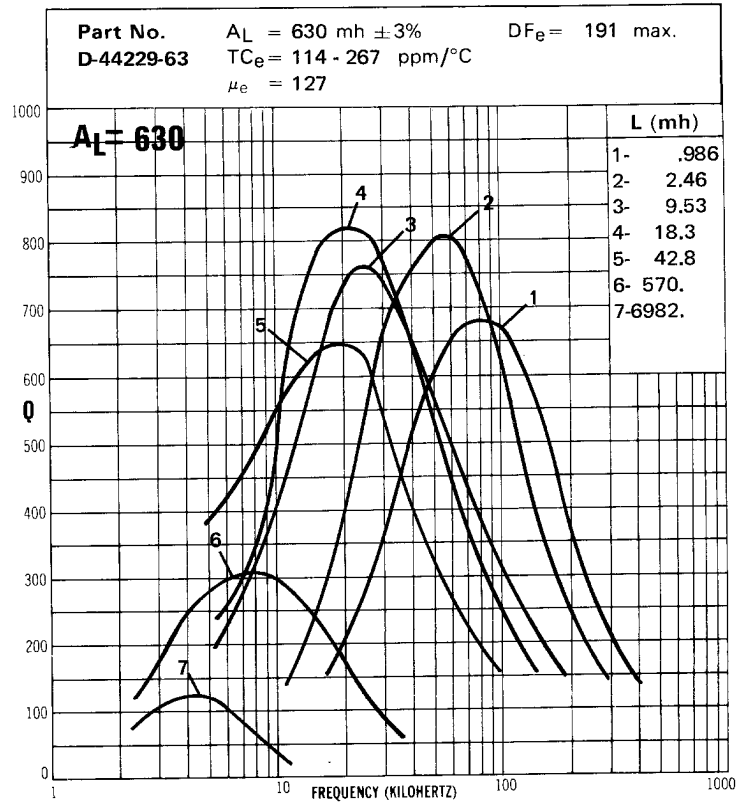
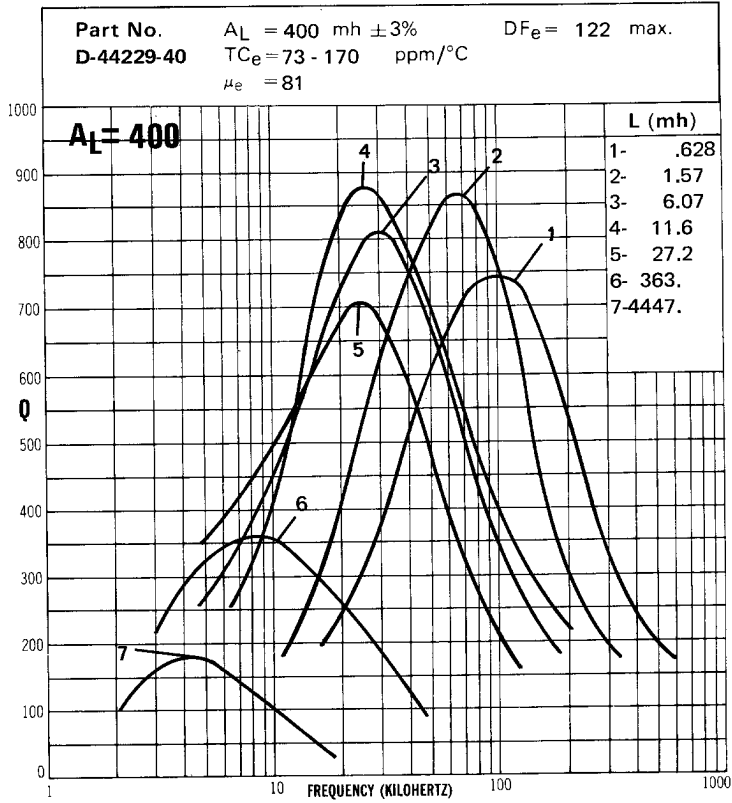
BOBBIN WINDING AREA (Per Section)	BOBBIN INFORMATION		
	Number	Turns	Wire
Single Sect. <u>.755</u> cm ²	1	32	360/44
	2	72	180/44
	3	132	100/44
	4	200	72/44
Double Sect. <u>.357</u> cm ²	5	500	#28
	6	1050	#32
Triple Sect. <u>.225</u> cm ²	7	1775	#34
(D) Double Section	8	106	150/44(D)



Core Size 42mm x 29mm Material D

BOBBIN WINDING AREA (Per Section)	BOBBIN INFORMATION		
	Number	Turns	Wire
Single Sect. <u>1.39</u> cm ²	1	40	220/44
Double Sect. <u>*</u>	2	63	220/44
Triple Sect. <u>*</u>	3	123	220/44
	4	170	180/44
	5	260	100/44
	6	950	#28
	7	3300	#34

*Not available

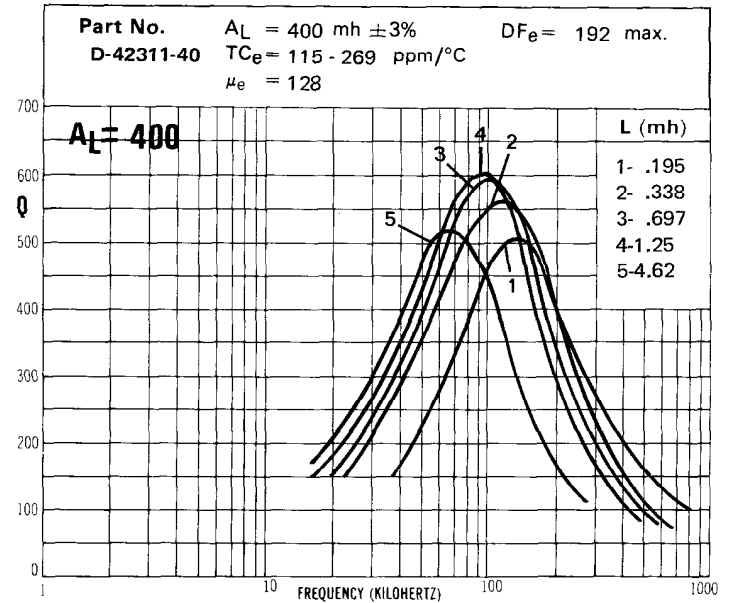
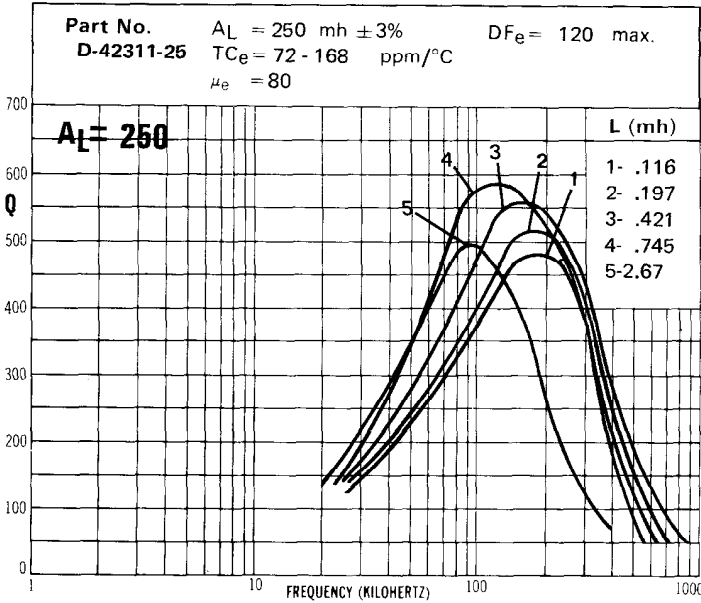


Core Size 23mm x 11mm

Material D

BOBBIN WINDING AREA (Per Section)	BOBBIN INFORMATION		
	Number	Turns	Wire
Single Sect. <u>.159</u> cm ²	1	22	120/44
Double Sect. <u>*</u>	2	29	100/44
Triple Sect. <u>*</u>	3	42	80/44
	4	56	60/44
	5	107	30/44

*Not available

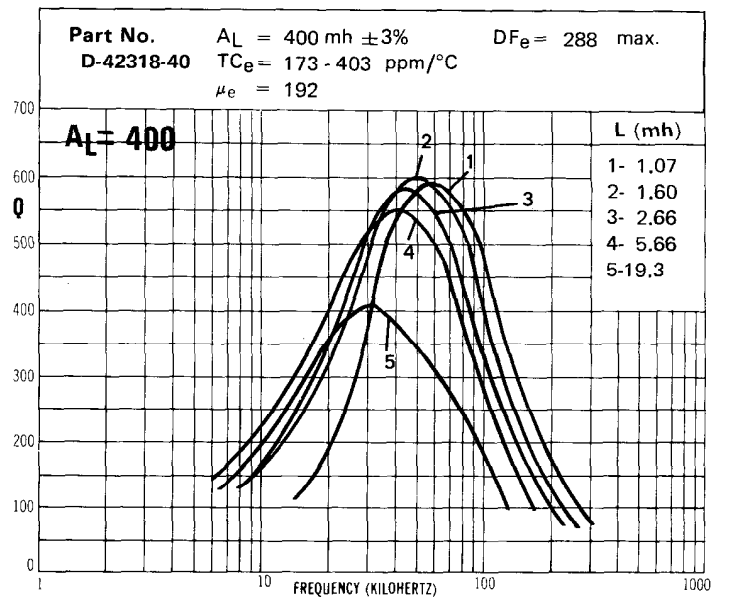
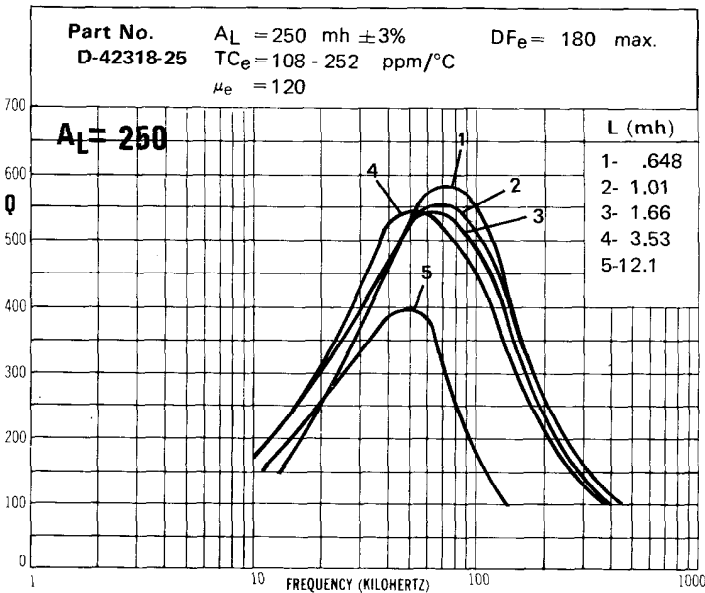


Core Size 23mm x 18mm

Material D

BOBBIN WINDING AREA (Per Section)	BOBBIN INFORMATION		
	Number	Turns	Wire
Single Sect. <u>.368</u> cm ²	1	51	120/44
Double Sect. <u>*</u>	2	63	100/44
Triple Sect. <u>*</u>	3	81	80/44
	4	119	60/44
	5	218	30/44

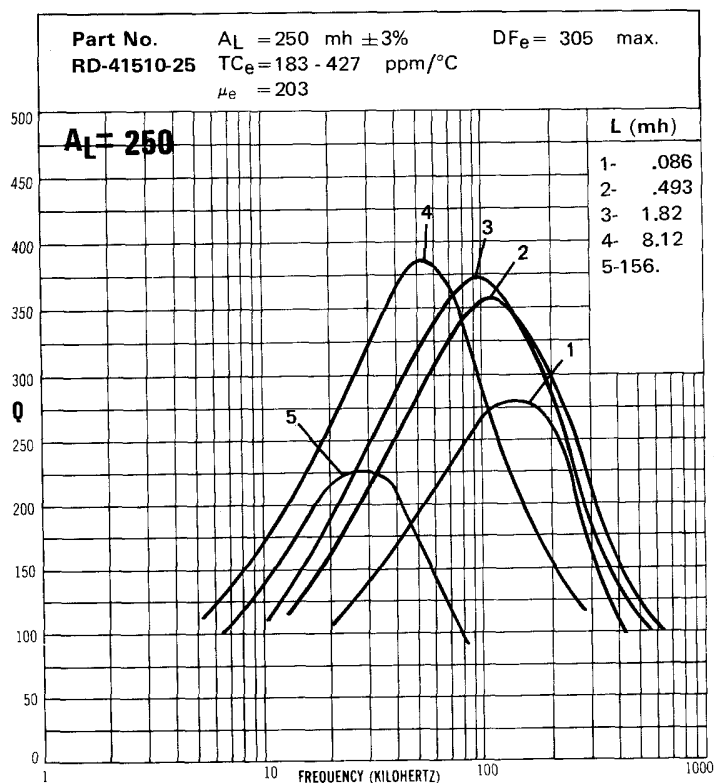
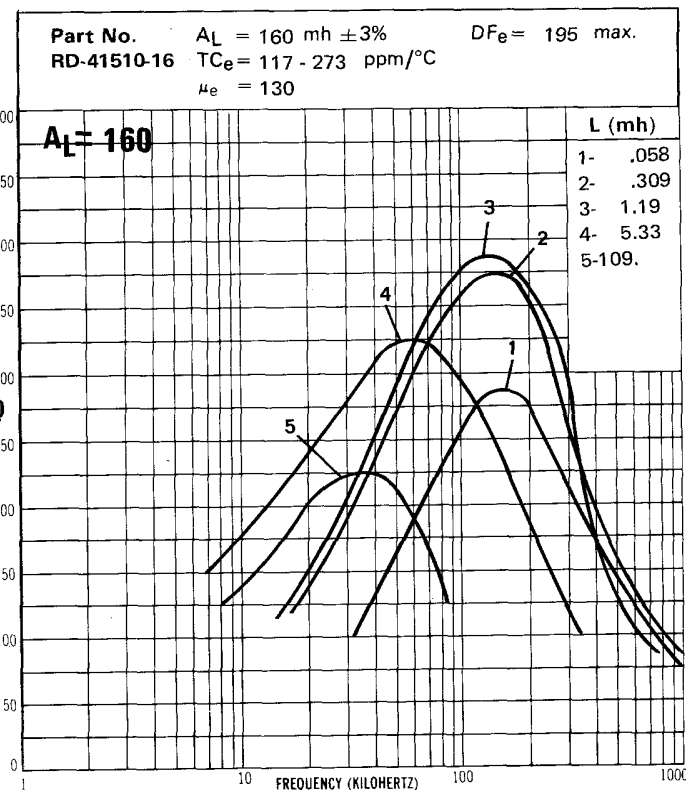
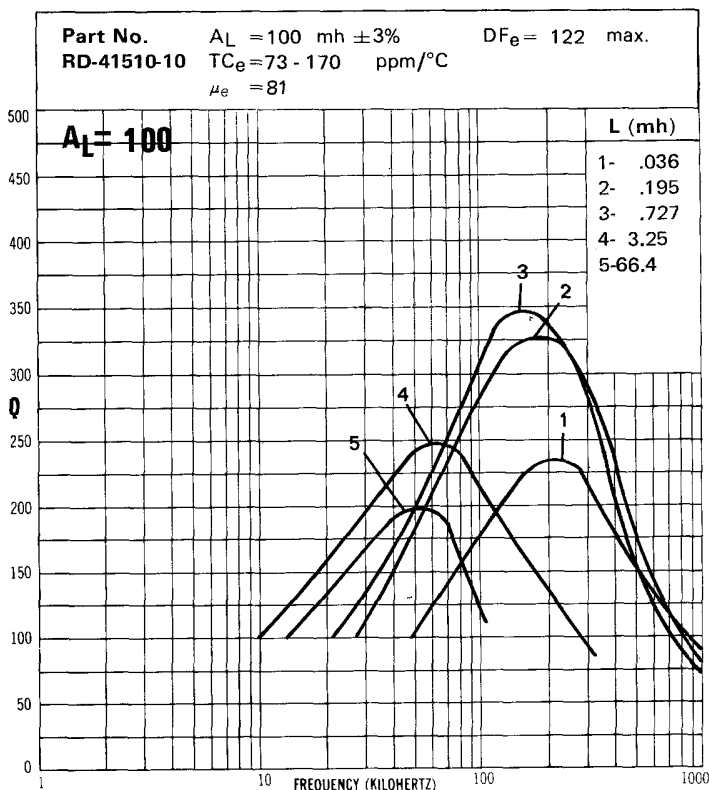
*Not available



Core Size 15mm x 10mm Material D

BOBBIN WINDING AREA (Per Section)	BOBBIN INFORMATION		
	Number	Turns	Wire
Single Sect. <u>.096</u> cm ²	1	19	80/44
Double Sect. <u>*</u>	2	45	40/44
Triple Sect. <u>*</u>	3	87	20/44
	4	184	#32
	5	830	#40

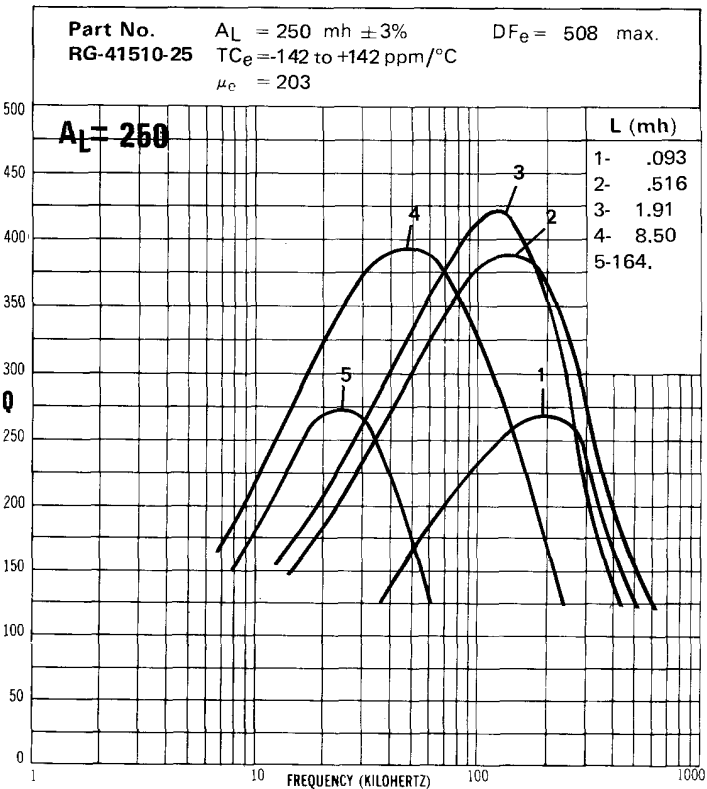
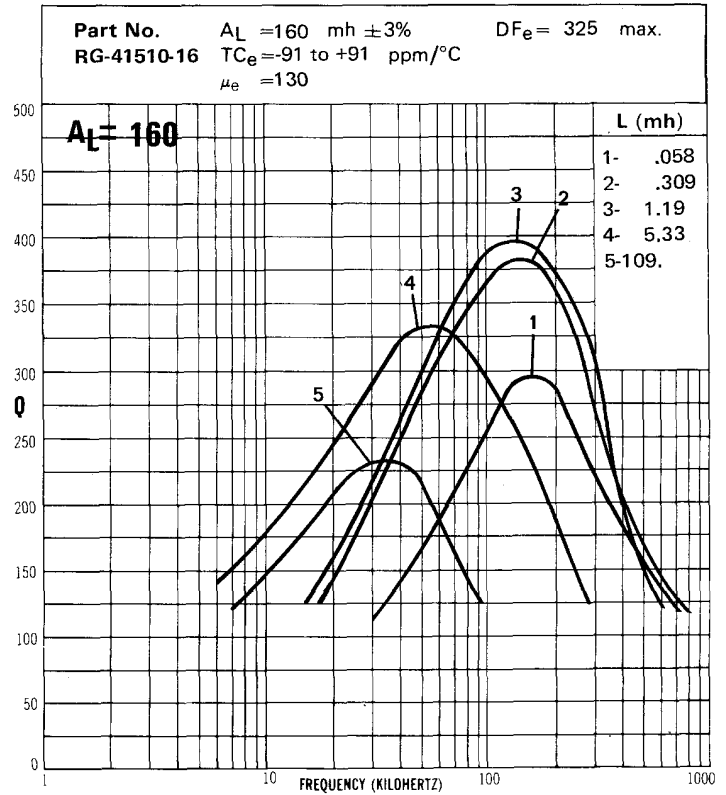
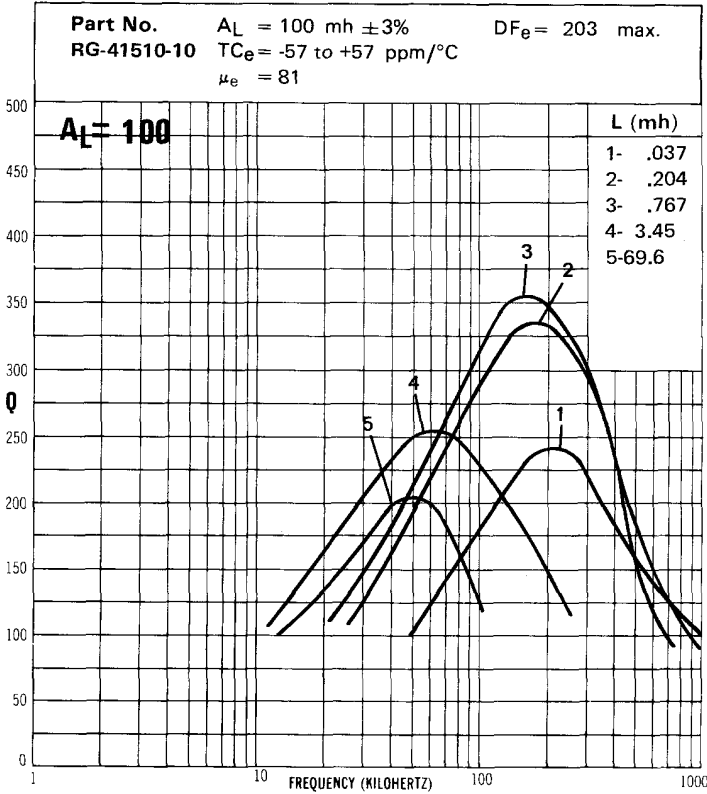
*Not available



Core Size 15mm x 10mm

Material G

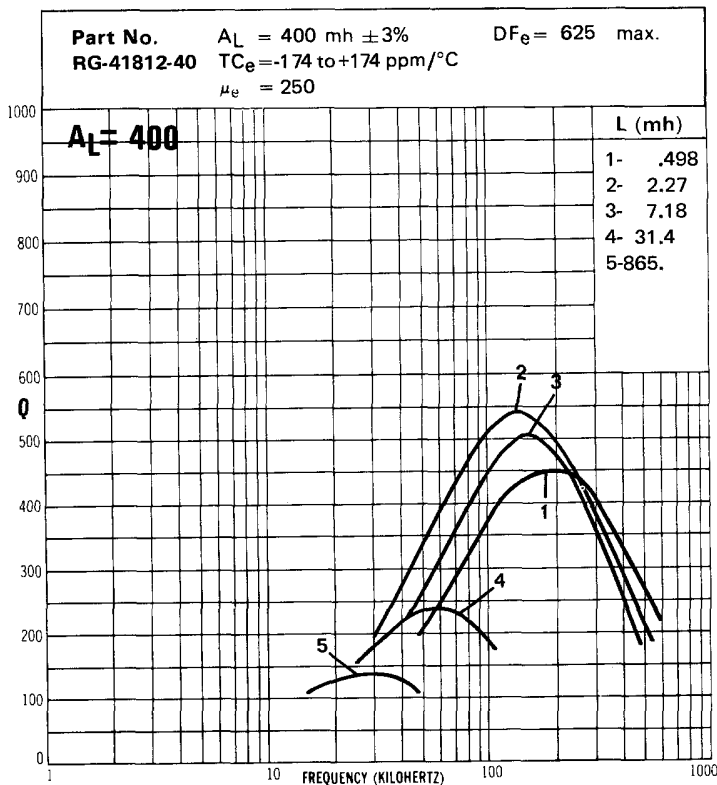
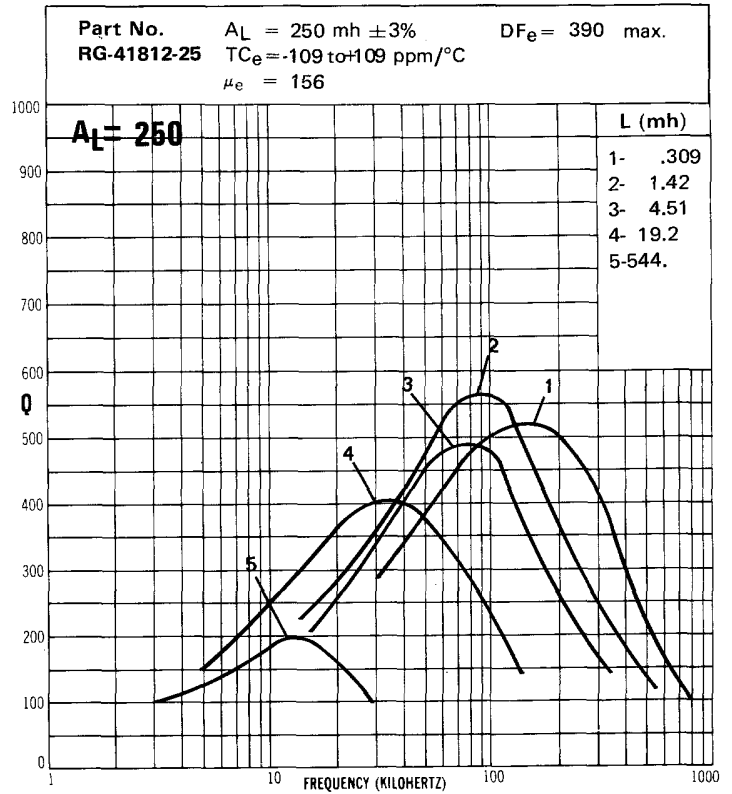
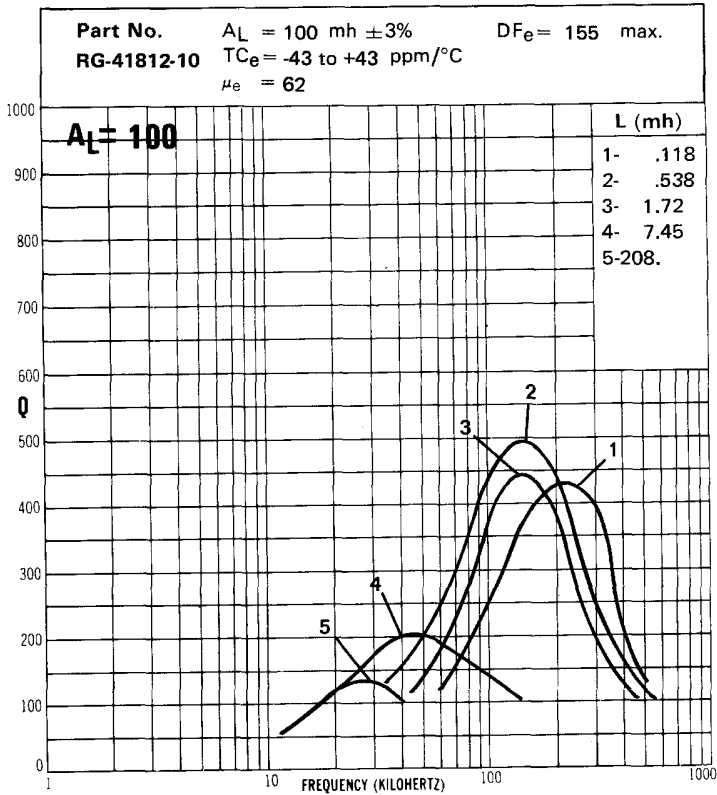
BOBBIN WINDING AREA (Per Section)	BOBBIN INFORMATION		
	Number	Turns	Wire
Single Sect. <u>.096</u> cm ²	1	19	80/44
	2	45	40/44
	3	87	20/44
Double Sect. <u>*</u>	4	184	#32
	5	830	#40
Triple Sect. <u>*</u>			
*Not available			



Core Size 18mm x 12mm (R6)

Material G

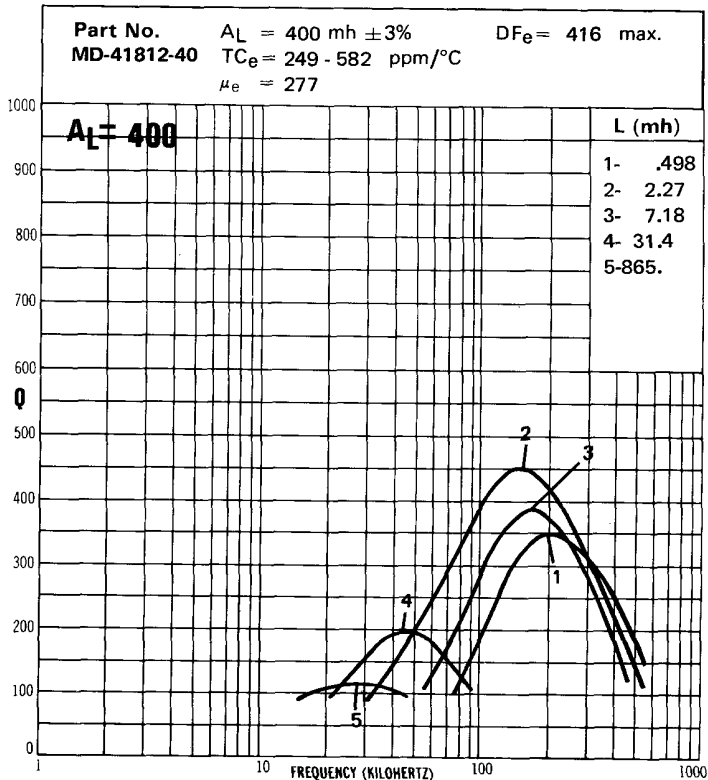
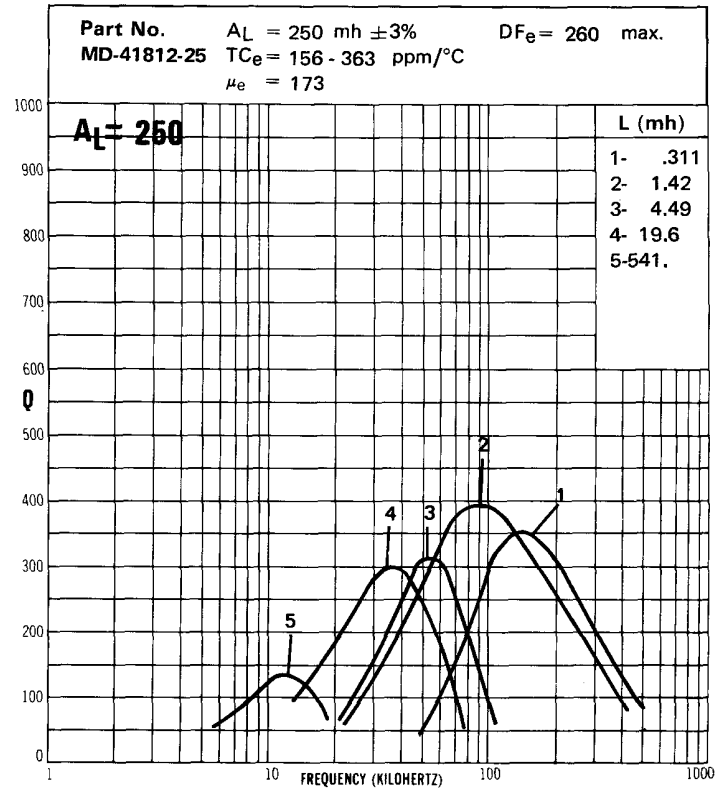
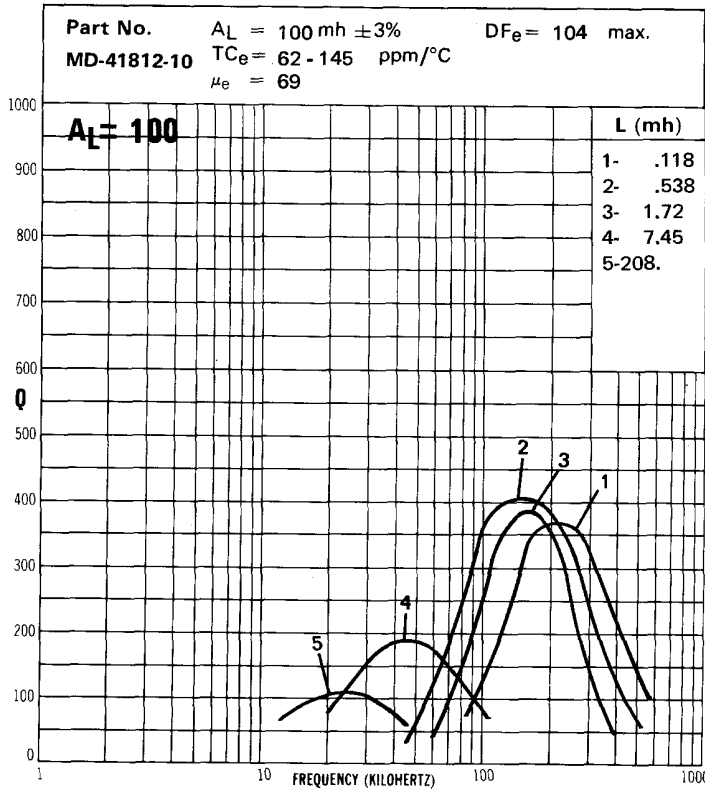
BOBBIN WINDING AREA (Per Section)	BOBBIN INFORMATION		
	Number	Turns	Wire
Single Sect. <u>.148</u> cm ²	1	35	80/44
Double Sect. <u>*</u>	2	75	40/44
Triple Sect. <u>*</u>	3	133	20/44
	4	277	#32
	5	1465	#40
*Not available			



Core Size 18mm x 12mm (M6) Material D

BOBBIN WINDING AREA (Per Section)	BOBBIN INFORMATION		
	Number	Turns	Wire
Single Sect. <u>.148</u> cm ²	1	35	80/44
Double Sect. <u>*</u>	2	75	40/44
Triple Sect. <u>*</u>	3	133	20/44
	4	277	#32
	5	1465	#40

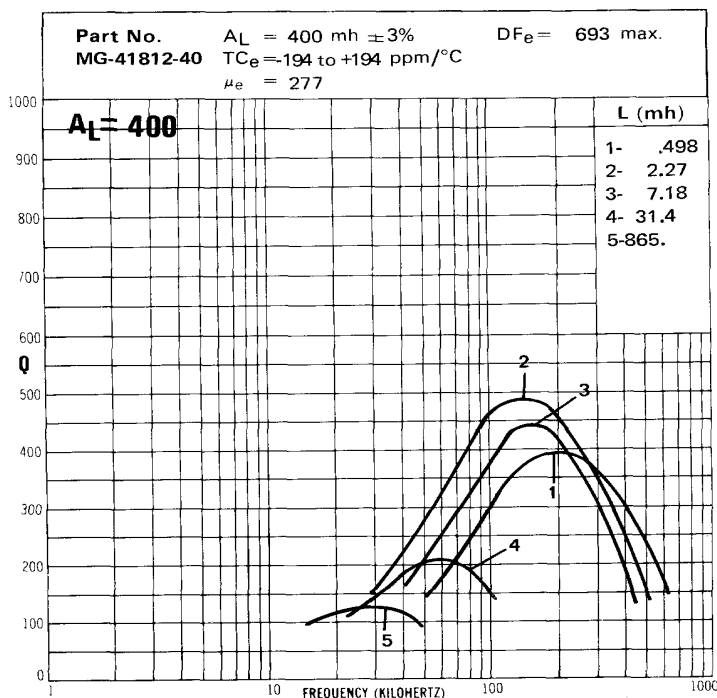
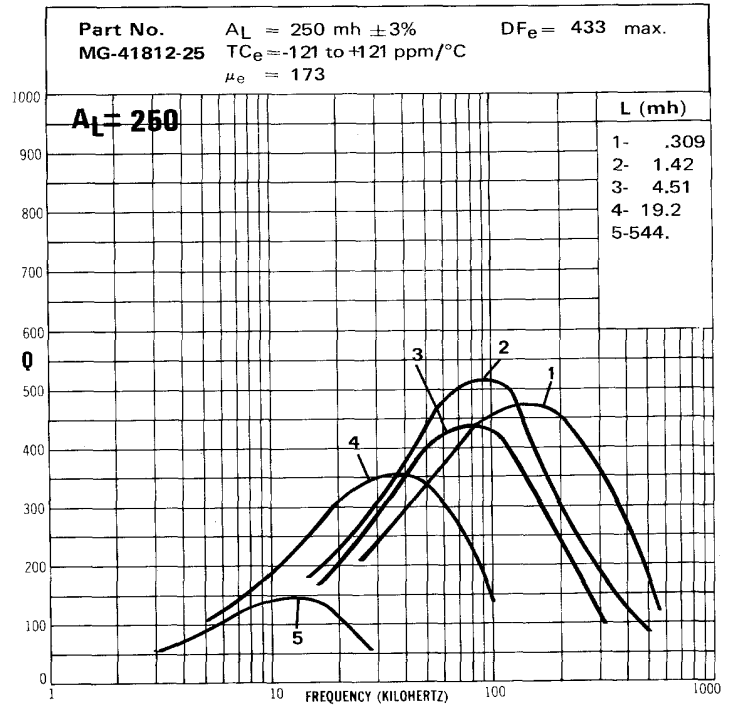
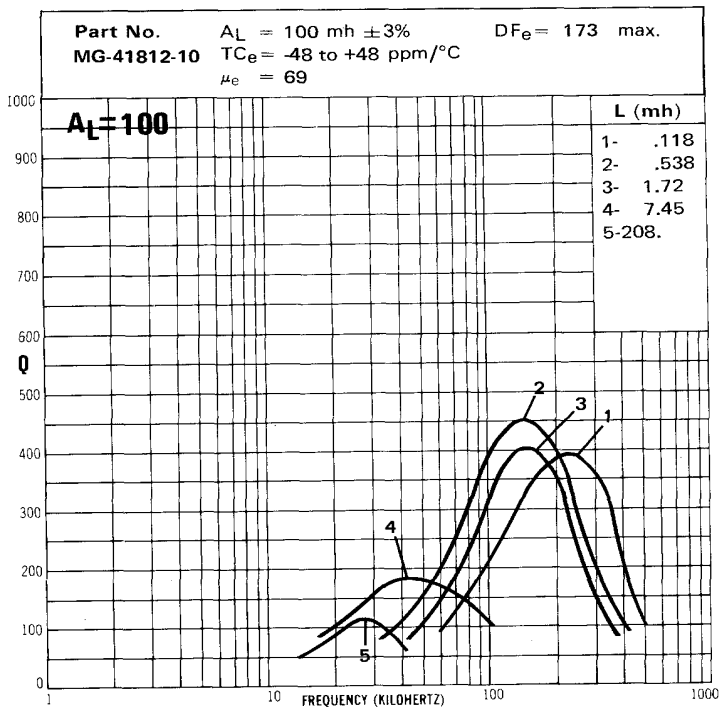
*Not available



Core Size 18mm x 12mm _(M6)

Material G

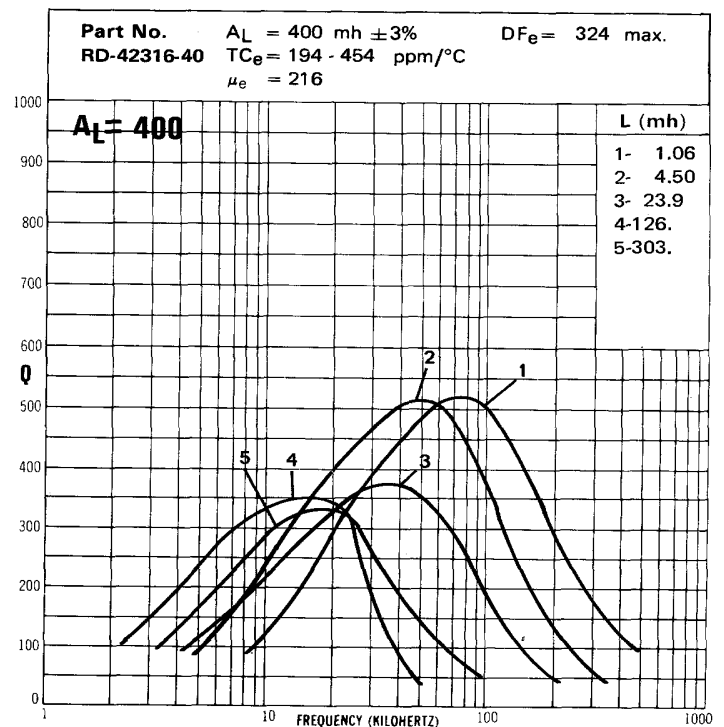
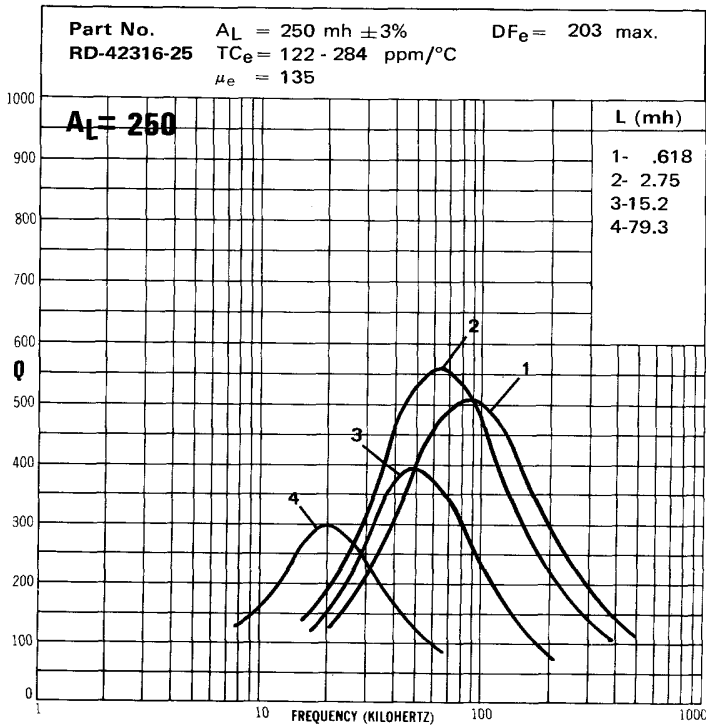
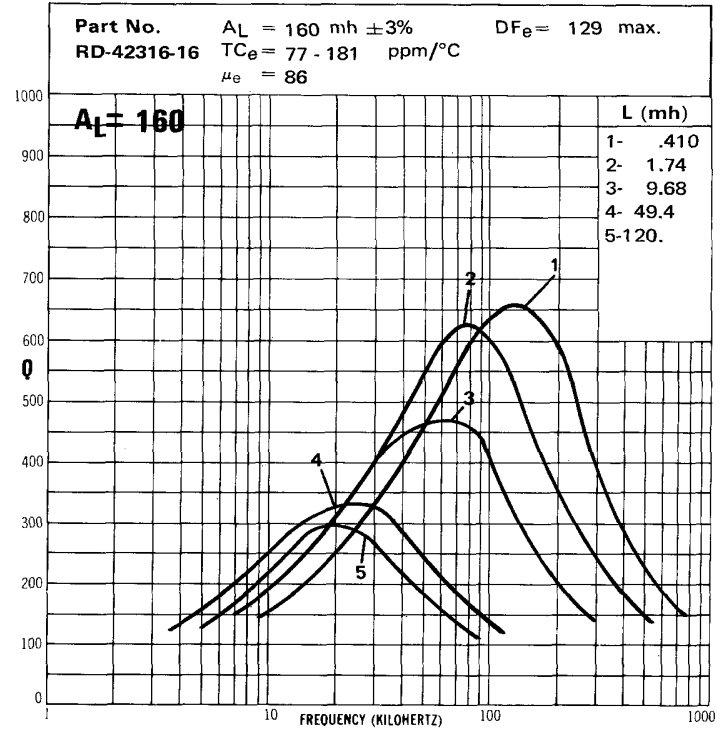
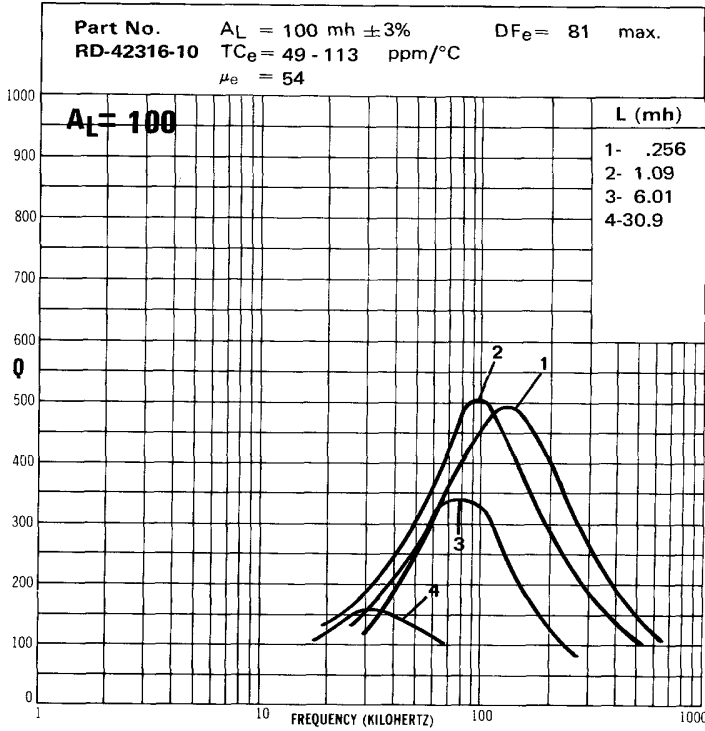
BOBBIN WINDING AREA (Per Section)	BOBBIN INFORMATION		
	Number	Turns	Wire
Single Sect. <u>.148</u> cm ²	1	35	80/44
Double Sect. <u>*</u>	2	75	40/44
Triple Sect. <u>*</u>	3	133	20/44
	4	277	#32
	5	1465	#40
*Not available			



Core Size 23mm x 16mm Material D

All measurements made on single section bobbins.

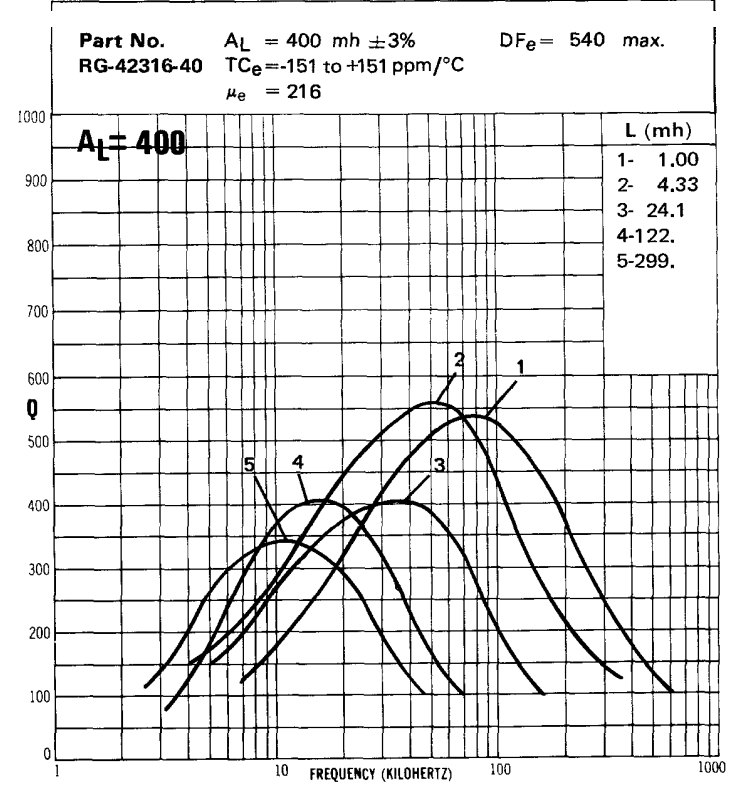
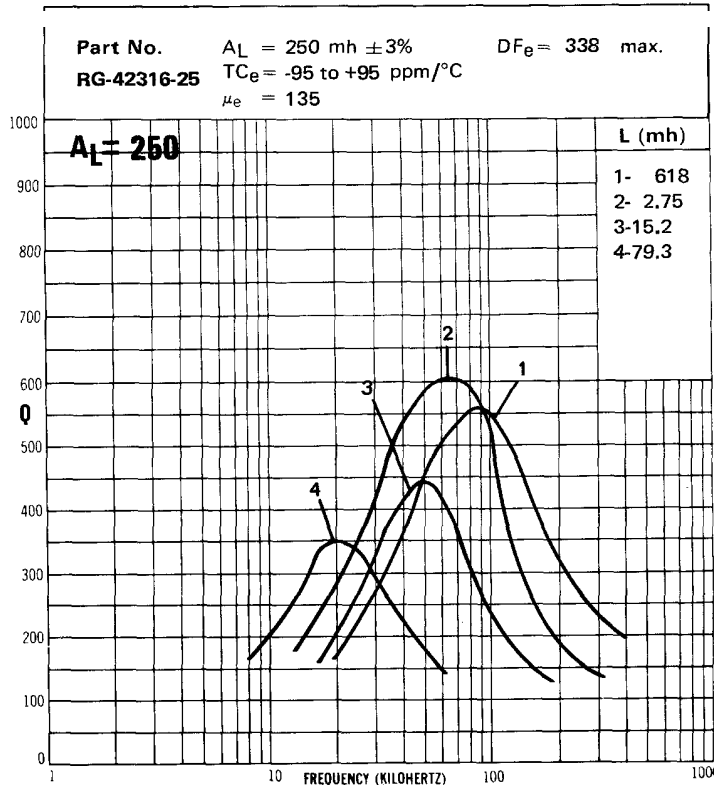
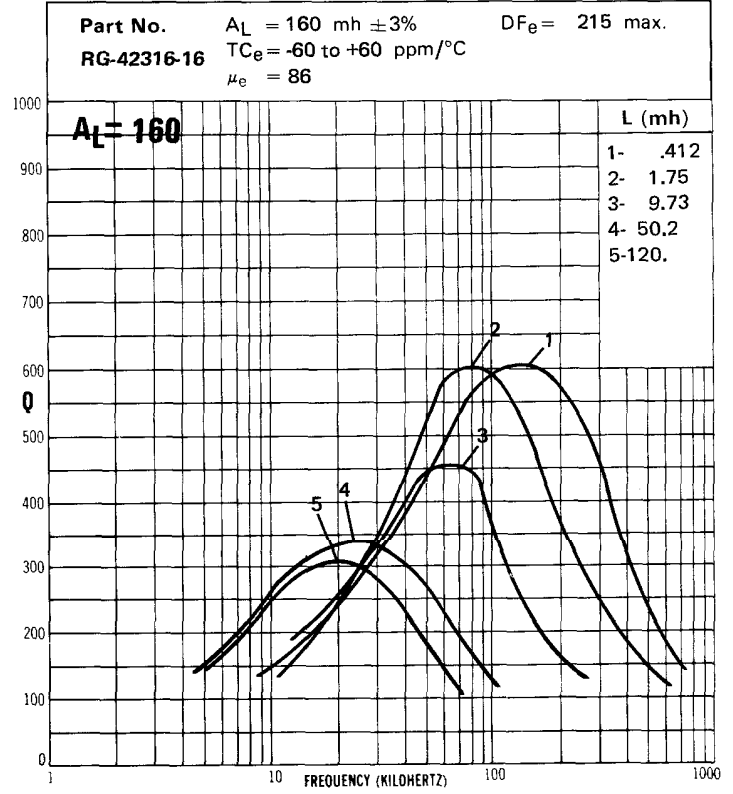
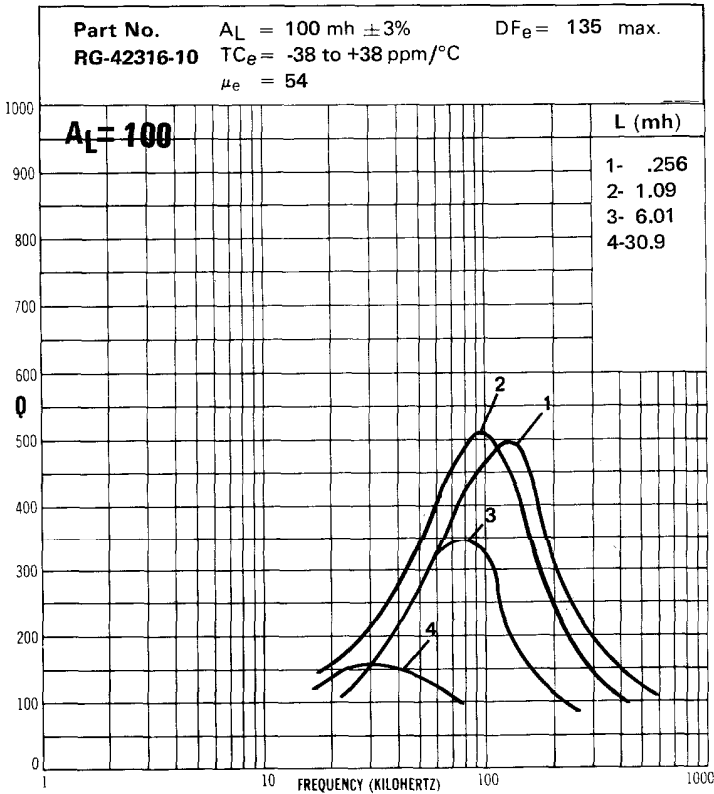
BOBBIN WINDING AREA (Per Section)	BOBBIN INFORMATION		
	Number	Turns	Wire
Single Sect. <u>.30</u> cm ²	1	51	100/44
Double Sect. <u>.142</u> cm ²	2	105	60/44
	3	248	20/44
	4	560	#32
	5	870	#37
Triple Sect. <u>*</u>			
*Not available			



Core Size 23mm x 16mm Material G

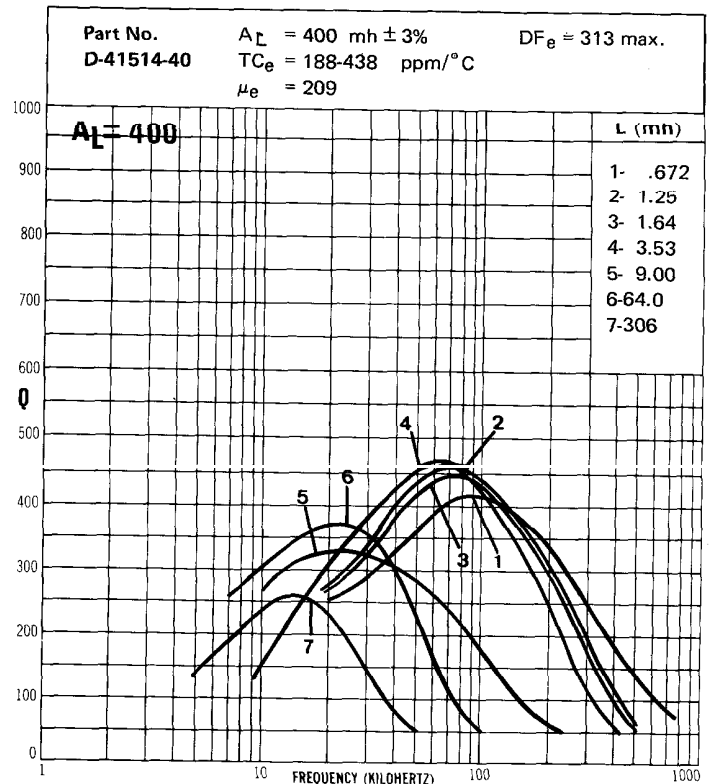
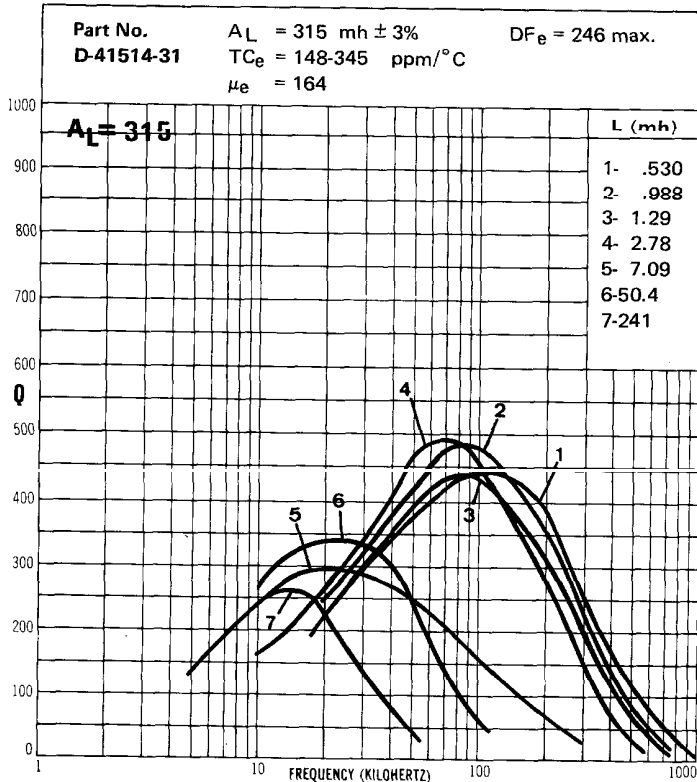
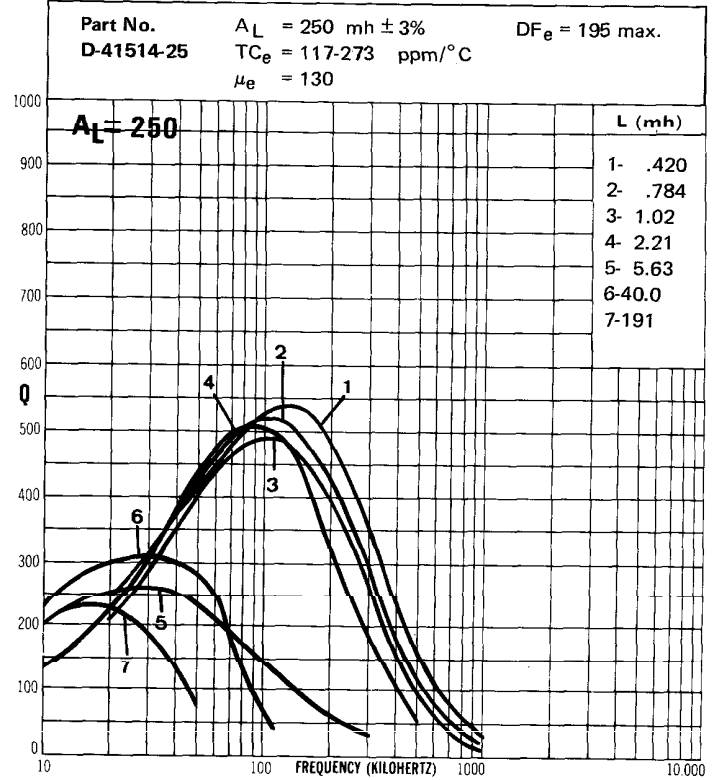
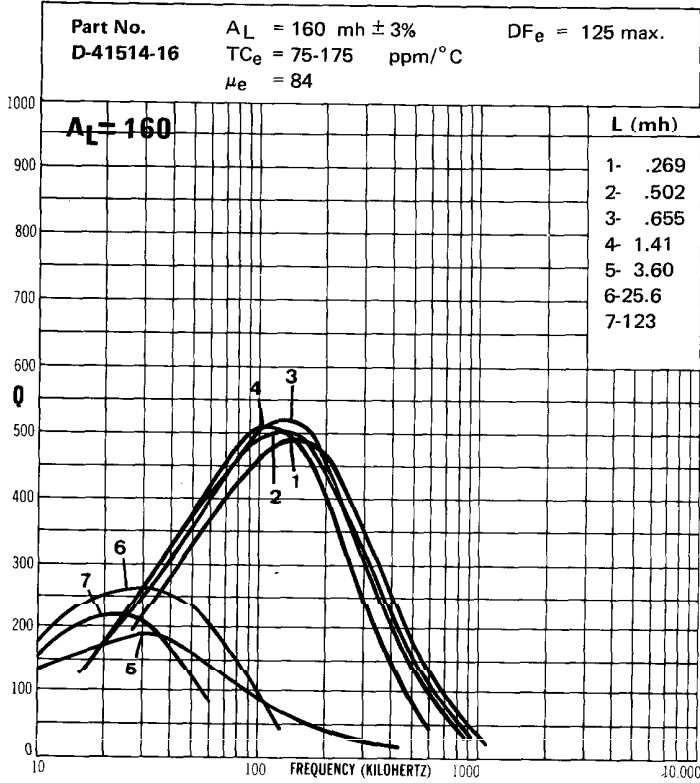
BOBBIN WINDING AREA (Per Section)	BOBBIN INFORMATION		
	Number	Turns	Wire
Single Sect. <u>.30</u> cm ²	1	51	100/44
	2	105	60/44
	3	248	20/44
Double Sect. <u>.142</u> cm ²	4	560	#32
	5	870	#37
Triple Sect. <u>*</u>			
*Not available			

All measurements made on single section bobbins.



Core Size 15mm x 14mm Material D

BOBBIN WINDING AREA	BOBBIN INFORMATION		
	Number	Turns	Wire
Single Sect. <u>.23</u> cm ²	1	41	100/44
	2	56	80/44
	3	64	60/44
	4	94	40/44
	5	150	#28
	6	400	#32
	7	875	#36





HOME OFFICE AND FACTORY

796 E. Butler Road

P.O. Box 391

Butler, PA 16003

FAX: 412-282-6955

Phone: 412-282-8282

1-800-245-3984

MPP Powder Cores • High Flux Powder Cores

KOOL MU® Powder Cores

Tape Wound Cores • Bobbin Cores

Ferrite Cores

Custom Components